

I-SUB 210

DESCRIPTION

High power double 10" subwoofer with very compact design

FEATURES

- High power double 10" subwoofer with very compact design
- Can be used for both fixed installations and mobile/rental applications
- The sophisticated band pass design guarantees a deep but still punchy bass reproduction
- High 500Wrms power handling (1000Wpeak) @ 8Ω
- Perfect for bars, discotheques, stage, rental, Pro-DJ, cafes, ...
- Strong and rigid enclosure design:
 - Made of 15mm plywood
 - Durable, scratch resistant, painting
 - Heavy duty rubber feet
 - Steel front grill, covered with acoustic foam
- Equipped with 2 long excursion 10" woofers
- A perfect match with 4x CLS-8 mid/high cabinets
- Also perfect to combine with other mid/high speaker cabinets.

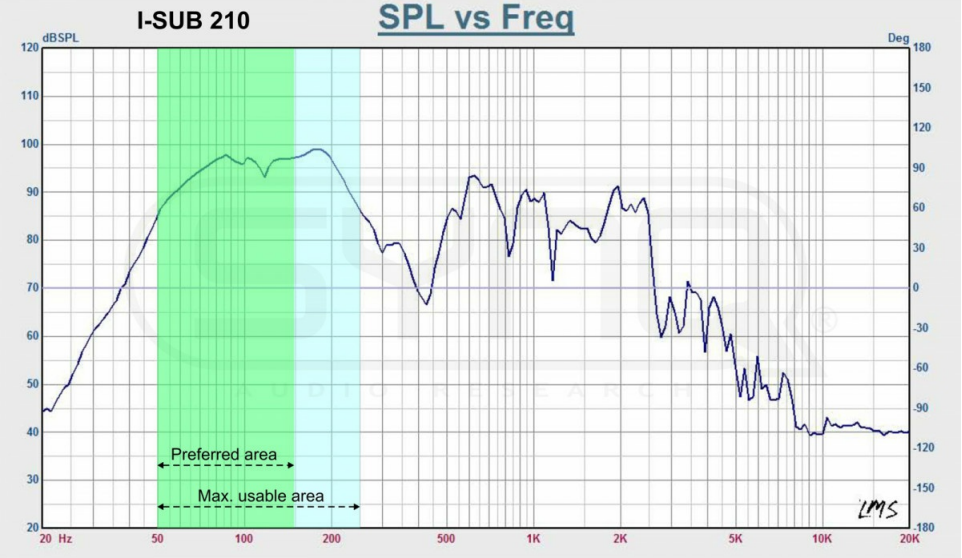
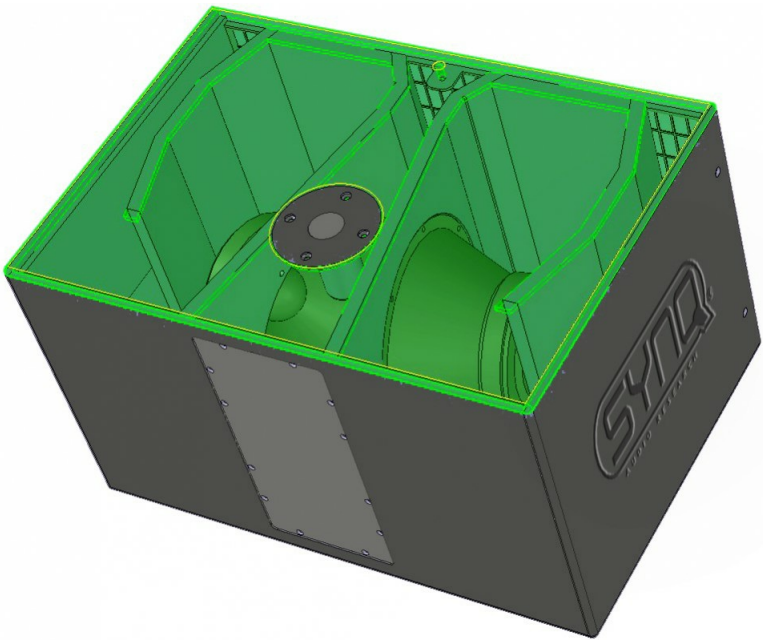


WWW.SYNQ-AUDIO.COM | WWW.FACEBOOK.COM/SYNQ.AUDIO

BEGLEC NV HAS THE RIGHT TO CHANGE PRODUCTS AND SPECIFICATIONS WITH AND WITHOUT NOTICE. MAJOR AS WELL AS MINOR CHANGES CAN BE INVOLVED. THIS LEAFLET CAN CONTAIN ERRORS, THEREFORE WE ADVISE TO CONSULT YOUR LOCAL DEALER TO ENSURE THAT ACTUAL FEATURES AND SPECIFICATIONS MATCH YOUR REQUIREMENTS. COPYRIGHT © 2024 BY BEGLEC NV. ALL RIGHTS RESERVED.

TECHNICAL SPECIFICATIONS

| | |
|-------------------------------------|-----------------|
| General : Dimensions (cm) | 60 x 35 x 41 cm |
| General : Weight (kg) | 26 |
| General : Color | black |
| General : IP rating | indoor |
| Audio : frequency range | 50 Hz - 200 Hz |
| Audio : Wrms 8Ω stereo, per channel | 500 |
| Connections : input | speakon |
| Connections : output | speakon |
| Brand | SYNQ |
| EANCode | 5420025606424 |
| SKU | B00642 |



YOUR DEALER



WWW.SYNQ-AUDIO.COM | WWW.FACEBOOK.COM/SYNQ.AUDIO

BEGLEC NV HAS THE RIGHT TO CHANGE PRODUCTS AND SPECIFICATIONS WITH AND WITHOUT NOTICE. MAJOR AS WELL AS MINOR CHANGES CAN BE INVOLVED. THIS LEAFLET CAN CONTAIN ERRORS, THEREFORE WE ADVISE TO CONSULT YOUR LOCAL DEALER TO ENSURE THAT ACTUAL FEATURES AND SPECIFICATIONS MATCH YOUR REQUIREMENTS. COPYRIGHT © 2024 BY BEGLEC NV. ALL RIGHTS RESERVED.