



User Manual

celexon TV/Display Wall Mount Adjust-SRT55470



Thank you for purchasing this product.

For optimum performance and safety, please read these instructions carefully before connecting or operating this product. Please keep these instructions for future reference.

WARNINGS

The purpose of this operating manual is to familiarise you with the operation of this product. Therefore, keep these instructions in a safe place, so that you can access them at any time.

- Do not start the assembly before you have read and understood the complete operating instructions.
- Carry out the installation with another person to ensure a safe installation.
- Remove the product from the packaging and remove all packaging material. Make sure that no packaging material is on or in the product. If you notice any damage to the packaging, also check whether there is any damage to the product. If you notice any external damage to the device or unexpected or unusual functions, the product must not be used any longer. Immediately contact the dealer from whom you purchased the product or celexon directly (Web: www.celexon.co.uk, Mail: info@celexon.co.uk) for further information.
- To ensure trouble-free operation, the product must only be used indoors, it is NOT intended for outdoor use.
- Children under the age of 16 are prohibited from using the appliance and accessories.
- Ensure that no children play with the devices or stay in the vicinity without supervision. Ensure that the product is not installed in places where people are permanently present.
- Converting or modifying the product impairs product safety.
- Handle the product with care. It can be damaged by shocks, impacts or falling from even a small height.
- Keep the product away from moisture and do not use it in dusty environments.
- Use the product only in its intended manner, any other use may result in personal injury, damage to the product or its surroundings.
- Tighten the screws, but do not overtighten them. Excessive tightening (e.g. by using a cordless screwdriver) can cause damage and impair the secure hold of the product.
- If necessary, procure suitable mounting material for your mounting surface. Make sure that the surface has sufficient load-bearing capacity to hold the product and other components securely and permanently.
- After installation of the product and other components, they must be checked for operational safety.
- Suspended loads must be checked for strength and load-bearing capacity at least

twice a year.

- Do not load the product with more weight than permitted. Pay attention to the maximum permissible carrying weight.
- Ensure that the product is loaded as centrally as possible, especially after the product has been adjusted.
- All supply lines and cables must not be subjected to additional loads and must be laid in such a way that they do not become a trip hazard, damaged or crushed.
- The enclosed screws for mounting the display must be checked for compatibility with your device. If they are too long (can damage the display) or too short (at least 5 threads must be able to be screwed in), obtain suitable screws for your device.
- After installing the bracket and the display attached to it, the entire construction must be checked again for bonding strength and tight fit to your supporting structure.
- Ensure that there is sufficient space at the installation site to guarantee a secure installation.
- The installation location must be selected in such a way that it is accessible at all times and not obstructed so that a regular visual and tensile check of the load of all components (at least twice a year!)
- Failure to follow the above instructions may result in personal injury and damage to the product or equipment connected to it. Also, incorrect installation or use may void the warranty.
- If you are unsure about the use of the product, please contact your qualified personnel, your dealer or celexon directly (Web: www.celexon.co.uk, Mail: info@celexon.co.uk).
- Technical changes and errors expected.

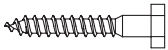
DISCLAIMER

The information in this document is subject to change without notice by the manufacturer. Changes will be added to the following versions of this manual. The manufacturer does not guarantee or warranty for the correctness of the information in this document.

TECHNICAL DATA

- Suitable for display sizes from 32" to 55"
- Wall distance from 55 to 470 mm
- Supported Vesa standard up to: 400 x 400
- Swivelling range: 180°
- Tilt: -15° bis +5°
- Rotation: -5° bis +5°
- max. weight capacity: 50 kg

IN THE BOX



(A) Wall screws x5



(B) Plastic dowels x5



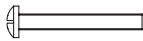
(C) Washer
Ø5 mm x4



(D) Plastic sleeve x4



(E) Washer Ø6 mm
x5



(F) Screw M4
30 mm x4



(G) Screw M4
15 mm x4



(H) Screw M5
30 mm x4



(I) Screw M5
15 mm x4



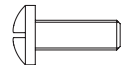
(J) Screw M6
30 mm x4



(K) Screw M6
15 mm x4



(L) Screw M8
30 mm x4



(M) Screw M8
15 mm x4



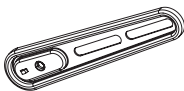
(N) Hexagon spanner x1



(O) Open-end spanner
x1



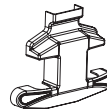
(P) Screw M8 8 mm x4



Extension plate x4



Top cover cap x1



Bottom cover cap x1

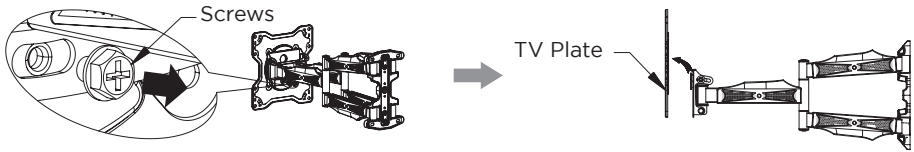
ASSEMBLY

STEP 1:

Remove the packaging and film residues from the product before installation.

STEP 2:

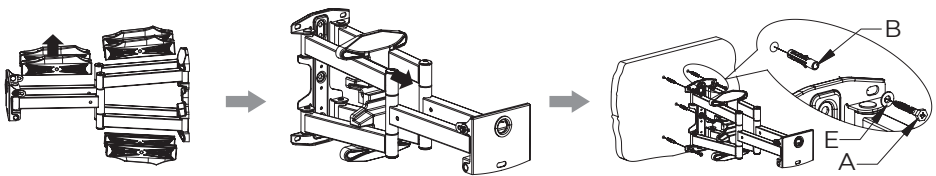
Loosen the screws on the TV plate as shown. Lift the TV plate and remove it from the wall plate.



STEP 3:

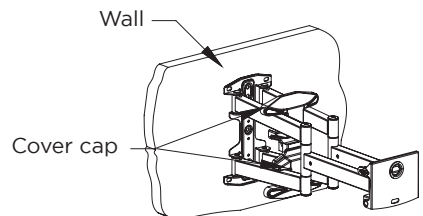
Remove the cover cap from the bracket. Now use the wall plate as a template to mark five holes on the installation wall. Drill the marked holes $\varnothing 10$ mm and 65 mm deep into the wall. Then countersink the plastic plugs (B) into each hole. Fasten the wall plate with five wall screws (A) and five washers (E) through the fixing holes.

Attention: The enclosed mounting material is only suitable for mounting on solid brick walls. Obtain suitable mounting material for your supporting structure.



STEP 4:

Attach the cover cap to the wall plate as shown.



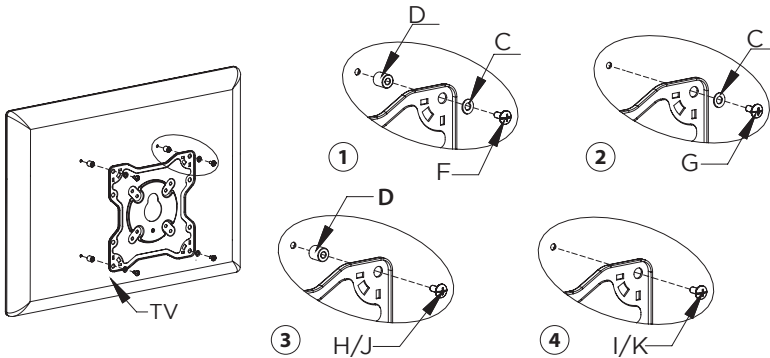
ASSEMBLY

STEP 5:

Mount the TV plate on the back of the TV set: Select the appropriate screws (F/G/H/I/J/K/L/M) for your display.

Note: The washer (C) is only required for screws F, G, H or I. The plastic sleeve (D) is only required for screws F, H, J or L.

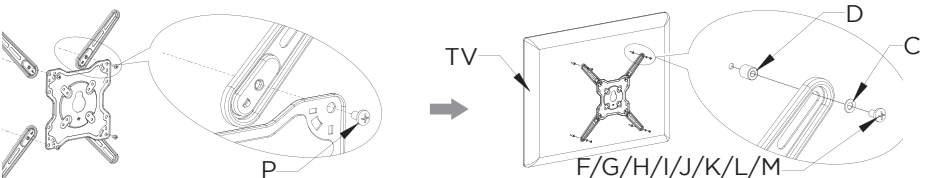
Attention: It is important to select the correct screws to prevent damage to your display and to protect it from falling.



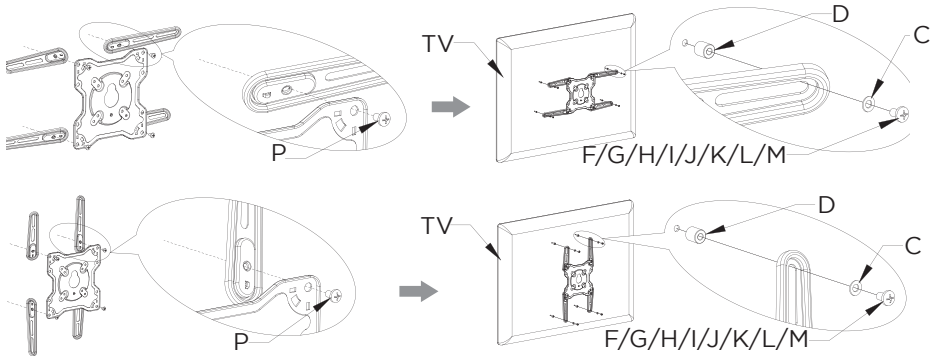
STEP 6:

If the TV plate is smaller than the hole spacing of your display, use the four extension plates. To do this, attach the extension plates to a suitable position on the TV plate using four M8 8 mm screws (P). Select the appropriate screws (F/G/H/I/J/K/L/M) for your display and mount the plates with screws, washers (C) and, if necessary, plastic sleeves (D) to the display.

Attention: It is important to select the correct screws to prevent damage to your display and to protect it from falling.

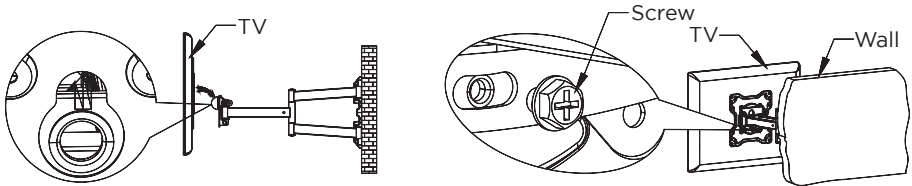


ASSEMBLY



STEP 7:

Lift the TV set together with the TV plate over the wall plate and hang the TV plate on the wall plate as shown in the illustration. Then tighten the screw on the TV plate.



STEP 8:

Lay the cables in the cable ducts and close them. Use the hexagon spanner (N) to adjust the angle of inclination.

Note: During installation, make sure that your hands and fingers do not get trapped and make sure that the cables are not kinked to avoid damage.

The installation is now complete.

