



AVCore series AV Processing Center

Quick Guide



Thank you for choosing our audio processor. Please read this user manual carefully before using the product.
As our products are continuously upgraded, any changes may be made without prior notice.

Thank you for choosing our Conference All-in-One AV Processor. The following guide will help you quickly understand how to use this product. This guide applies to the Wise "Easy-Connect" Host series.

Product Overview

Our company's Wise "Easy-Connect" Host integrates audio processing, HDMI switching and distribution, and audio-video capture capabilities, providing users with comprehensive audio and video processing and management solutions. It meets the needs of both local sound reinforcement and remote conferencing, including cloud conferencing and hardware remote terminal scenarios.

Audio Features:

- Supports 25 input channels (16 channels of AES67 + 8 channels of analog + 1 channel of USB soundcard) and 25 output channels (16 channels of AES67 + 8 channels of analog + 1 channel of USB soundcard) for comprehensive bus audio processing.
- Each channel supports high-pass/low-pass filters, EQ, AGC, compressors, and feedback suppression.
- Also supports automatic mixers, limiters, and delay functions.

Video Features:

- Supports 4K60Hz 4:4:4 HDMI video input.
- Features 4x1+1 HDMI video seamless switching.
- Built-in Type-C audio-video capture and USB 3.0 hub for seamless integration with various video conferencing software platforms and hardware remote terminals.

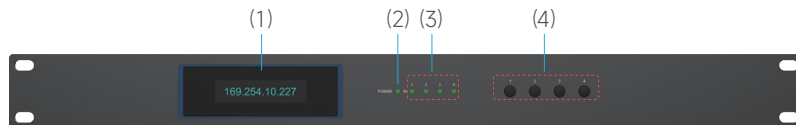
Available Configurations:

- 4 input/4 output
- 8 input/8 output
- 8 input/8 output (AES67)

This versatile hub is designed to enhance both audio and video experiences in professional meeting environments.

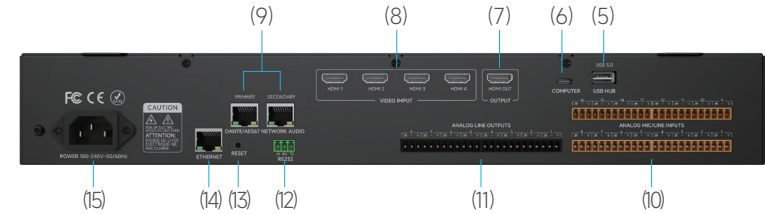
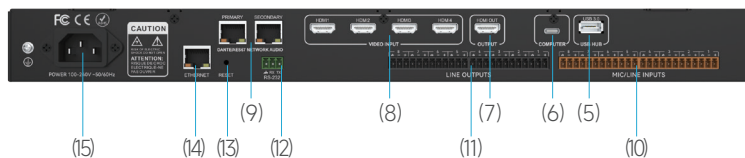
Device Port Overview

Front Panel



- (1) 2.23-inch OLED Display
Displays device name, IP address, firmware version, and DSP I/O channel levels.
- (2) POWER Indicator
Lights up when the device is powered on.
Wait for the system status indicator to start flashing, indicating that the device has fully booted.
- (3) HDMI Input Channel Indicator
- (4) HDMI Input Signal Selection

Rear Panel



- (5) USB 3.0 HUB
 - Supports USB microphones and USB cameras.
 - Distributes signals to the Type-C port.
- (6) Type-C Port
 - Supports both input and output functions.
 - Compatible with major video conferencing platforms such as Tencent Meeting, DingTalk, Skype, and Zoom.
 - Enables seamless transmission of local and remote audio-video signals.
- (7) HDMI Output (1 Channel)
 - Allows switching between any input signal via the front panel buttons or user interface.
- (8) 4K60Hz 4:4:4 HDMI Input (4 Channels)
 - Supports up to four high-definition video signals.
- (9) AES67 Port
 - Provides 16x16 AES67 network audio channels.
- (10) Analog Mic/Line Input
 - 16 balanced analog audio inputs.
 - Independent preamps and phantom power support.
- (11) Analog Line Output
 - 8 balanced analog outputs.
 - Software control for independent level adjustment and mute.
- (12) RS-232 Port
 - Allows third-party control of this device or enables this device to control third-party equipment via RS-232 protocol.
- (13) RESET Button
 - Restores the device to factory settings.
- (14) Control Network Port
 - Connects to Open Designer software for device programming, management, and control.
- (15) Power Input
 - Supports removable IEC power cables.

Powering On

1. Connect the power supply and turn on the device.
2. The POWER indicator will light up.
3. Wait for the system status indicator to start flashing, indicating that the device has successfully booted.
4. Once the POWER indicator is on, the device is ready for operation.



Connection Diagram



Client Network Configuration

The processor's default IP address is 169.254.10.227, with a subnet mask of 255.255.0.0.

To ensure proper connection between the client software and the processor, please make sure that the client host's IP address is within the same subnet as the processor.

Software Download

The installation software can be downloaded by accessing the processor within the same local network segment.

Steps to Download:

Open Internet Explorer (IE) or any web browser.

In the address bar, enter the device IP address: <http://169.254.10.227/>.

Navigate to the download link on the processor's web interface.

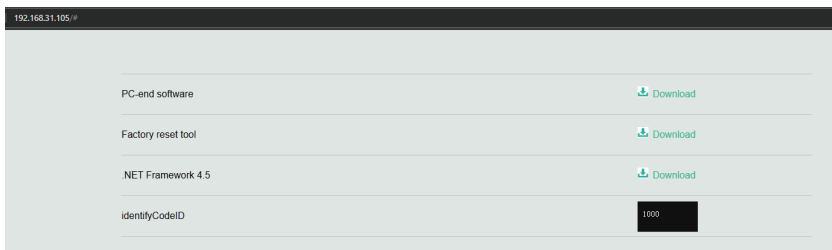
Download and install the software on your local PC.

Important Notes:

The default factory IP address of the device is 169.254.10.227, with a subnet mask of 255.255.0.0.

Before accessing the device, ensure your PC's IP address is set within the same subnet to establish a proper connection.

The device must be fully booted before attempting to access the download page.



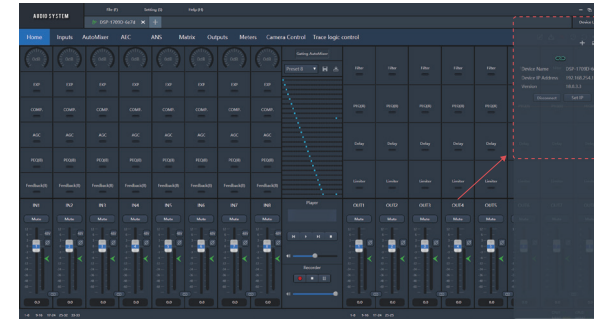
Prerequisite for Software Installation

Before installing the PC client software, please ensure that Microsoft .NET Framework 4.5 or a later version is installed on your PC.

Software Login

After the client software is installed, follow these steps to log in and connect to the device:

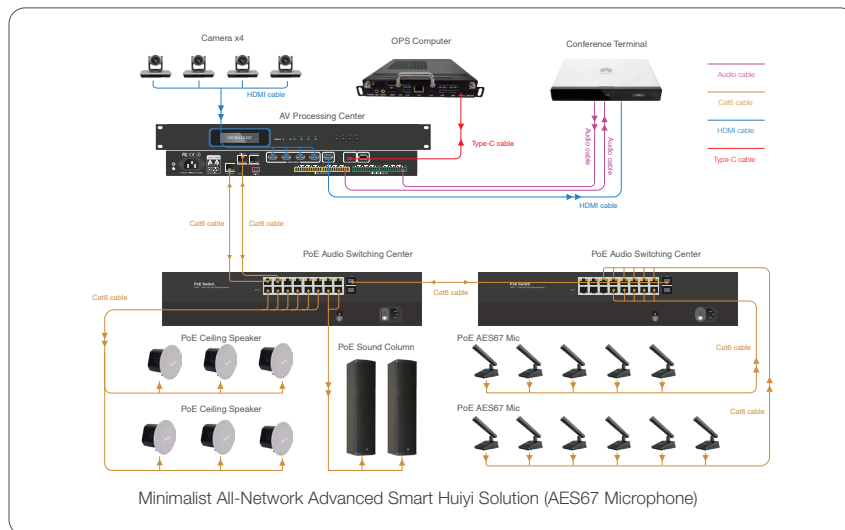
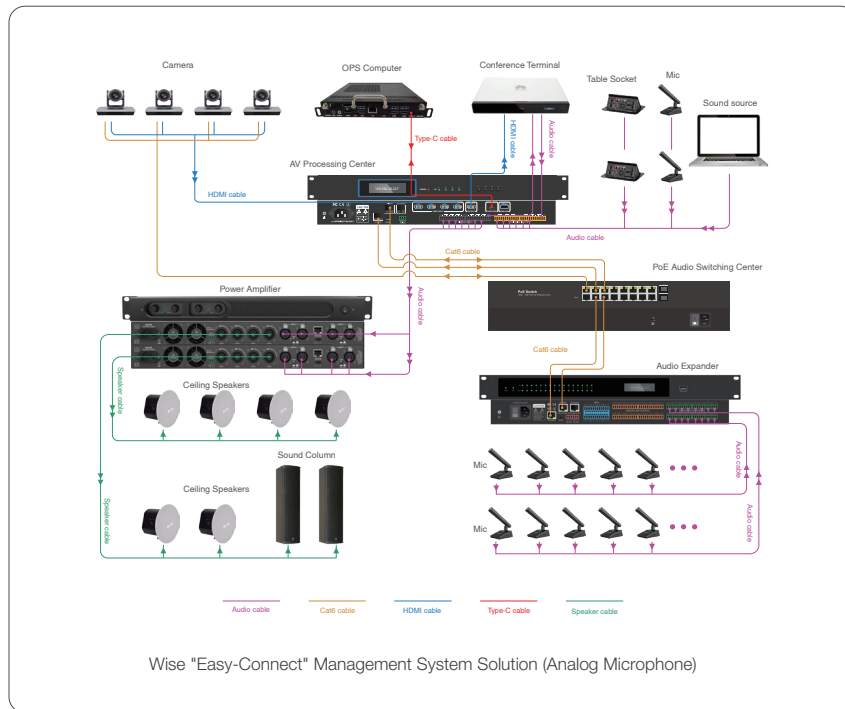
1. Open the software and click on the Device List to view the IP addresses of devices currently on the network.
2. Click on Network Connection to connect to the desired device for software configuration and debugging.
3. For more detailed instructions, please refer to the help documentation.



Technical Parameters

Audio Processing	4 input/4 output	8 input/8 output	8 input/8 output AES67	16 input/8 output	16 input/8 output AES67
Analog input/output channel count	4x4	8x8	8x8	16x8	16x8
AES67 input/output channel count	-	-	16x16	-	16x16
Frequency response (20Hz-20kHz)					
Phantom power	±0.3dB				
Sampling rate	+48V/10mA max				
Input dynamic range	48 kHz, ± 100 ppm				
Output dynamic range	113dB				
THD+N	113dB				
Video Processing	<-95dB @17dBu				
HDMI input channels	4				
HDMI output channels	1				
Type-C channels	1				
Video resolution	4K60Hz 4: 4: 4				
Switching mode	Seamless transition				
Device Specifications					
USB 3.0 HUB	1				
Power supply	110V-240V 50/60Hz				
Operating temperature	0-40 °C				
Dimensions (W x D x H)	482 x 260 x 45mm				
Shipping weight	4KG				

Solutions



Troubleshooting Guide

1. Network Connection Failure

Network connection failure is usually caused by the device being on a different subnet. If the LAN and the processor are on different subnets, follow these steps:

- Open the software on your PC.
- Double-click the device name and in the pop-up window, change the IP address to match the subnet of the local network.
- Click Network Connection to reconnect.

2. Output Buzzing or Humming Sound

If you hear a buzzing or humming sound from the output, please try the following:

- First, check if the processor is properly grounded. This typically requires connecting the grounding screw on the left side of the rear panel to a metal shell (like the cabinet) using a metal conductor.
- If the issue persists, check the wiring of the input device. If the input device is unbalanced (two wires), connect the "+" and "G" pins to the processor's input interface.

Precautions

To ensure the reliable operation of the device and the safety of personnel, please follow the below precautions during installation, use, and maintenance:

• Proper Grounding:

Ensure that the ground wire in the power cord is properly grounded and the device chassis is also grounded. Do not use two-pronged plugs. Ensure the device is supplied with an input power of 110V-240V, 50/60Hz AC.

• Ventilation:

Maintain good ventilation in the operating environment to allow for proper heat dissipation from the device. This will prevent overheating and potential damage.

• Power Off in Humid or Inactive Environments:

In humid, condensate-prone environments, or when the device will not be in use for an extended period, turn off the device's main power.

• Unplug Before Performing Maintenance:

Always unplug the device from the power source before performing the following actions:

- Removing or reinstalling any components.
- Disconnecting or reconnecting any electrical plugs or connections.

• Warning About High Voltage:

The device contains AC high-voltage components. Do not disassemble the device without proper training or authorization to avoid the risk of electric shock. Do not attempt repairs on your own as this may cause further damage.

• Avoid Contact with Corrosive Chemicals:

Do not spill any corrosive chemicals or liquids on or near the device.

Decoration List

Main Unit	1 unit	Small Screwdriver	1 piece
European Standard Header 3.81-12P	2-4 pieces	USB Cable	1 piece
European Standard Header 3.81-3P	1 piece	Qualification/Warranty Card	1 piece
Power Cable	1 piece	Quick Guide	1 copy
Foot Pads	1 set	Type-C Cable	1 piece