

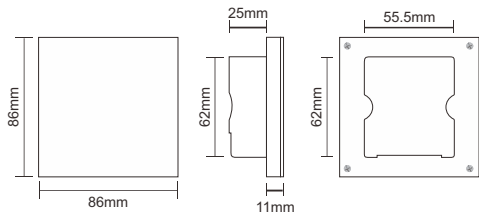
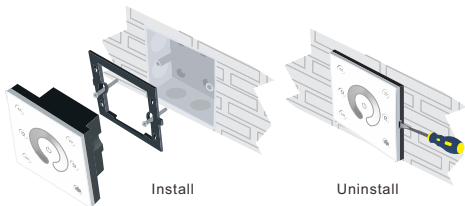
**PILOTdrive-1 MKII touch panel user guide**



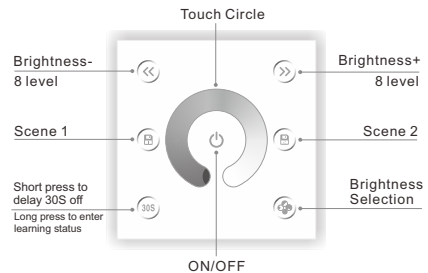
**Technical Specs:**

- Input Voltage: DC12V-24V
- Load Current: 4A×4CH Max 16A
- Grey Scale Level: 4096×4
- Dimming Range: 5%-100%
- Max Output Power: 192W/384W(12V/24V)
- Working Temperature: -20°C~55°C
- Dimensions: L86×W86×H36(mm)
- Weight(N.W): 190g

**Installation:**

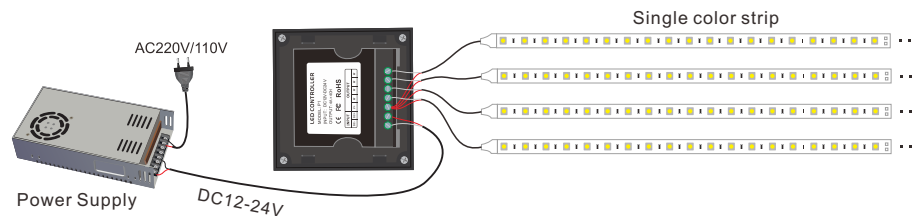


**Key Functions:**



- ※ Long press to turn on/off the buzzer.
- ※ Short press to call scene, long press to save scene.
- ※ Hold the , keys for 2 second, the controller will restore default and restart automatically.

**Wiring Diagram:**



**Kindly Reminde:**

**Power Source Selection:**  
Power source must be DC constant voltage type of power supply. Due to the efficient output in some power supplies are only 80% of total, so please select at least 20% higher output power supply than the consumption of LED lights.

**Green Block:**

