

Verification Report No.: SZXEC25003900902

Date: Jan 16, 2026

Page 1 of 39

Client Name: Audio Effetti Srl

Client Address: Via Aldo Manuzio, 57A, 16143 Genova GE, Italy.

Sample Name: LED Display

Tested Basic Model No.: EasySQUARE P2.9

Client Ref. Information: EasySQUARE P3.9, EasySQUARE P2.9
EasySQUARE P3.9(500×500), EasySQUARE P2.9(500×500)

The above sample(s) and information were provided by the client.

SGS Job No.: SZP25-052830

Sample Receiving Date: Oct 17, 2025

Verification Period: Oct 17, 2025 ~ Dec 15, 2025

Verification Requested: With reference to RoHS Directive (EU) 2015/863 amending 2011/65/EU.

Verification Method(s): Please refer to next page(s).

Verification Result(s): Please refer to next page(s).

Test Result Summary:

Test Items	Conclusion
EU RoHS Directive (EU) 2015/863 amending Annex II to Directive 2011/65/EU - Lead, Mercury, Cadmium, Hexavalent chromium, Polybrominated biphenyls (PBB), Polybrominated diphenyl ethers (PBDE), Bis(2-ethylhexyl) phthalate (DEHP), Butyl benzyl phthalate (BBP), Dibutyl phthalate (DBP) and Diisobutyl phthalate (DIBP)	Pass

Signed for and on behalf of
SGS-CSTC Standards Technical Services Co., Ltd. Shenzhen Branch

Ford

Ford Shi

Approved Signatory

Scan to see the report



5FCCA0AA



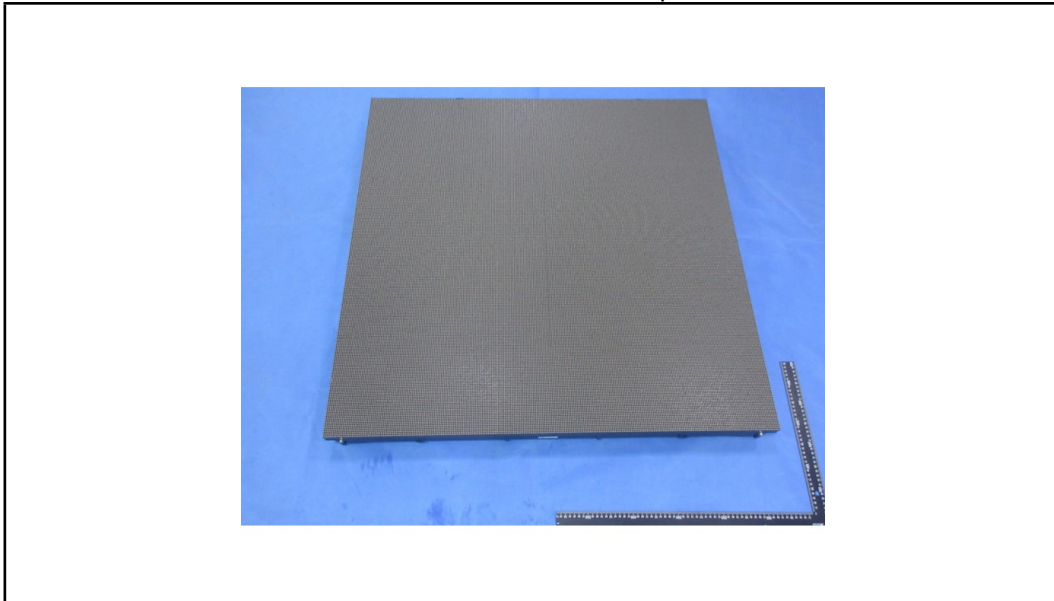
Unless otherwise agreed in writing, this document is issued by the Company subject to its General Conditions of Service printed overleaf, available on request or accessible at <https://www.sgs.com/en/Terms-and-Conditions>. Attention is drawn to the limitation of liability, indemnification and jurisdiction issues defined therein. Any holder of this document is advised that information contained hereon reflects the Company's findings at the time of its intervention only and within the limits of Client's instructions, if any. The Company's sole responsibility is to its Client and this document does not exonerate parties to a transaction from exercising all their rights and obligations under the transaction documents. This document cannot be reproduced except in full, without prior written approval of the Company. Any unauthorized alteration, forgery or falsification of the content or appearance of this document is unlawful and offenders may be prosecuted to the fullest extent of the law. Unless otherwise stated the results shown in this test report refer only to the sample(s) tested.

Attention: To check the authenticity of testing/inspection report & certificate, please contact us at telephone: (86-755) 8307 1443, or email: CN.Doccheck@sgs.com

SGS-CSTC Standards Technical Services Co., Ltd.
Shenzhen Branch

Room 101-501, Plant 4 & Room 101, Plant 2 & Room 101, Plant 3 & Room 301-501, Plant 3, Jianghao (Bantian) Industrial Plant Area, No. 430, Jihua Road, Bantian Community, Bantian Street, Longgang District, Shenzhen, Guangdong, China 518129 www.sgs.com.cn
中国·广东·深圳市龙岗区坂田街道坂田社区吉华路430号江豪(坂田)工业厂区厂房4号101-501、2号101、3号301-501 邮编:518129 t:(86-755) 25328888 sgs.china@sgs.com

Photo of Submitted Sample



Verification Method(s):

1. With reference to IEC 62321-2:2021, disassembly and disjointment were performed for the submitted samples.
2. With reference to IEC 62321-1:2013, tests were performed for the samples indicated by the photos in this report.
 - (1) With reference to IEC 62321-3-1:2013, screening by EDXRF spectroscopy.
 - (2) Wet chemical test method: With reference to IEC 62321-4:2013+A1:2017, IEC62321-5:2013, IEC 62321-7-1:2015, IEC 62321-7-2:2017, IEC 62321-12:2023, IEC 62321-6:2015 and IEC62321-8:2017 , analyzed by ICP-OES,UV-Vis and GC-MS.



Unless otherwise agreed in writing, this document is issued by the Company subject to its General Conditions of Service printed overleaf, available on request or accessible at <https://www.sgs.com/en/Terms-and-Conditions>. Attention is drawn to the limitation of liability, indemnification and jurisdiction issues defined therein. Any holder of this document is advised that information contained hereon reflects the Company's findings at the time of its intervention only and within the limits of Client's instructions, if any. The Company's sole responsibility is to its Client and this document does not exonerate parties to a transaction from exercising all their rights and obligations under the transaction documents. This document cannot be reproduced except in full, without prior written approval of the Company. Any unauthorized alteration, forgery or falsification of the content or appearance of this document is unlawful and offenders may be prosecuted to the fullest extent of the law. Unless otherwise stated the results shown in this test report refer only to the sample(s) tested.

Attention: To check the authenticity of testing /inspection report & certificate, please contact us at telephone: (86-755) 8307 1443, or email: CN.Doccheck@sgs.com

SGS-CS Standards Technical Services Co., Ltd.
Shenzhen Branch

Room 101-901, Plant 4 & Room 101, Plant 2 & Room 101, Plant 3 & Room 301-501, Plant 3, Jianghao (Bantian) Industrial Plant Area, No. 430, Jihua Road, Bantian Community, Bantian Street, Longgang District, Shenzhen, Guangdong, China 518129 www.sgs.com.cn
中国·广东·深圳市龙岗区坂田街道坂田社区吉华路430号江豪(坂田)工业厂区厂房4号101-901、2号101、3号301-501 邮编:518129 t:(86-755) 25328888 sgs.china@sgs.com

Verification Part Description:

SN ID	Sample No.	SGS Sample ID	Description
SN1	A1	SZX25-0039009-0001.C001	Silvery metal shell with black surface
SN2	A2	SZX25-0039009-0001.C002	Silvery metal part
SN3	A3	SZX25-0039009-0001.C003	Silvery metal shaft
SN4	A4	SZX25-0039009-0001.C004	Silvery metal part
SN5	A5	SZX25-0039009-0001.C005	Silvery metal spring
SN6	A6	SZX25-0039009-0001.C006	Silvery metal plate
SN7	A7	SZX25-0039009-0001.C007	Silvery metal screw
SN8	A8	SZX25-0039009-0001.C008	Silvery metal shaft
SN9	A9	SZX25-0039009-0001.C009	White plastic label with multi-color printing
SN10	A10	SZX25-0039009-0001.C010	White plastic label with black printing
SN11	A11	SZX25-0039009-0001.C011	Silvery metal plate with black surface
SN12	A12	SZX25-0039009-0001.C012	Dark gray foam with adhesive glue
SN13	A13	SZX25-0039009-0001.C013	Silvery metal shell
SN14	A14	SZX25-0039009-0001.C014	Silvery metal part
SN15	A15	SZX25-0039009-0001.C015	Silvery metal spring
SN16	A16	SZX25-0039009-0001.C016	Translucent white plastic (wire insulation)
SN17	A17	SZX25-0039009-0001.C017	Silvery metal core wire
SN18	A18	SZX25-0039009-0001.C018	Silvery metal screw with black surface
SN19	A19	SZX25-0039009-0001.C019	Black plastic part
SN20	A20	SZX25-0039009-0001.C020	Red soft plastic part
SN21	A21	SZX25-0039009-0001.C021	Black plastic shell
SN22	A22	SZX25-0039009-0001.C022	Black plastic frame
SN23	A23	SZX25-0039009-0001.C023	Black soft plastic ring
SN24	A24	SZX25-0039009-0001.C024	Black soft plastic part
SN25	A25	SZX25-0039009-0001.C025	Black plastic heat shrinkable tube
SN26	A26	SZX25-0039009-0001.C026	Black plastic heat shrinkable tube
SN27	A27	SZX25-0039009-0001.C027	Silvery foil with blue surface
SN28	A28	SZX25-0039009-0001.C028	Transparent plastic sheet
SN29	A29	SZX25-0039009-0001.C029	White -green plastic (wire insulation)
SN30	A30	SZX25-0039009-0001.C030	Green plastic (wire insulation)
SN31	A31	SZX25-0039009-0001.C031	White -blue plastic (wire insulation)
SN32	A32	SZX25-0039009-0001.C032	Blue plastic (wire insulation)
SN33	A33	SZX25-0039009-0001.C033	White -brown plastic (wire insulation)
SN34	A34	SZX25-0039009-0001.C034	Brown plastic (wire insulation)
SN35	A35	SZX25-0039009-0001.C035	White -orange plastic (wire insulation)
SN36	A36	SZX25-0039009-0001.C036	Orange plastic (wire insulation)
SN37	A37	SZX25-0039009-0001.C037	White plastic shell
SN38	A38	SZX25-0039009-0001.C038	Golden metal pin
SN39	A39	SZX25-0039009-0001.C039	Orange soft plastic part
SN40	A40	SZX25-0039009-0001.C040	Black plastic shell
SN41	A41	SZX25-0039009-0001.C041	Silvery metal shell
SN42	A42	SZX25-0039009-0001.C042	Black plastic (cable jacket)
SN43	A43	SZX25-0039009-0001.C043	Black plastic shell
SN44	A44	SZX25-0039009-0001.C044	Black plastic part
SN45	A45	SZX25-0039009-0001.C045	Silvery metal plate
SN46	A46	SZX25-0039009-0001.C046	Transparent plastic sheet



Unless otherwise agreed in writing, this document is issued by the Company subject to its General Conditions of Service printed overleaf, available on request or accessible at <https://www.sgs.com/en/Terms-and-Conditions>. Attention is drawn to the limitation of liability, indemnification and jurisdiction issues defined therein. Any holder of this document is advised that information contained hereon reflects the Company's findings at the time of its intervention only and within the limits of Client's instructions, if any. The Company's sole responsibility is to its Client and this document does not exonerate parties to a transaction from exercising all their rights and obligations under the transaction documents. This document cannot be reproduced except in full, without prior written approval of the Company. Any unauthorized alteration, forgery or falsification of the content or appearance of this document is unlawful and offenders may be prosecuted to the fullest extent of the law. Unless otherwise stated the results shown in this test report refer only to the sample(s) tested.

Attention: To check the authenticity of testing /inspection report & certificate, please contact us at telephone: (86-755) 8307 1443, or email: CN.Doccheck@sgs.com

SGS-CTE (Shenzhen) Technical Services Co., Ltd.
Shenzhen Branch

Room 101-901, Plant 4 & Room 101, Plant 2 & Room 101, Plant 3 & Room 301-501, Plant 3, Jiangnan (Bantian) Industrial Plant Area, No. 430, Jihua Road, Bantian Community, Bantian Street, Longgang District, Shenzhen, Guangdong, China 518129 www.sgs.com
中国·广东·深圳市龙岗区坂田街道坂田社区吉华路430号江楠(坂田)工业厂区厂房4号101-901、2号101、3号301-501 邮编:518129 t:(86-755) 25328888 sgs.china@sgs.com

SN ID	Sample No.	SGS Sample ID	Description
SN47	A47	SZX25-0039009-0001.C047	Green "PCB"
SN48	A48	SZX25-0039009-0001.C048	Silvery metal pin with golden surface
SN49	A49	SZX25-0039009-0001.C049	Transparent plastic shell
SN50	A50	SZX25-0039009-0001.C050	Silvery metal shell
SN51	A51	SZX25-0039009-0001.C051	Black plastic frame
SN52	A52	SZX25-0039009-0001.C052	Black soft plastic part
SN53	A53	SZX25-0039009-0001.C053	Black soft plastic ring
SN54	A54	SZX25-0039009-0001.C054	Silvery metal solder
SN55	A55	SZX25-0039009-0001.C055	Silvery metal plate with golden surface
SN56	A56	SZX25-0039009-0001.C056	Silvery metal part
SN57	A57	SZX25-0039009-0001.C057	Silvery metal spring
SN58	A58	SZX25-0039009-0001.C058	Black plastic shell
SN59	A59	SZX25-0039009-0001.C059	Black plastic (cable jacket)
SN60	A60	SZX25-0039009-0001.C060	Black plastic heat shrinkable tube
SN61	A61	SZX25-0039009-0001.C061	Yellow -green plastic (wire insulation)
SN62	A62	SZX25-0039009-0001.C062	Blue plastic (wire insulation)
SN63	A63	SZX25-0039009-0001.C063	Brown plastic (wire insulation)
SN64	A64	SZX25-0039009-0001.C064	Golden metal part
SN65	A65	SZX25-0039009-0001.C065	Black plastic heat shrinkable tube
SN66	A66	SZX25-0039009-0001.C066	Black soft plastic shell
SN67	A67	SZX25-0039009-0001.C067	Black plastic (cable jacket)
SN68	A68	SZX25-0039009-0001.C068	Blue plastic (wire insulation)
SN69	A69	SZX25-0039009-0001.C069	Brown plastic (wire insulation)
SN70	A70	SZX25-0039009-0001.C070	Yellow -green plastic (wire insulation)
SN71	A71	SZX25-0039009-0001.C071	Black plastic shell
SN72	A72	SZX25-0039009-0001.C072	Black plastic shell
SN73	A73	SZX25-0039009-0001.C073	Black plastic shell
SN74	A74	SZX25-0039009-0001.C074	Silvery metal part
SN75	A75	SZX25-0039009-0001.C075	Silvery metal spring
SN76	A76	SZX25-0039009-0001.C076	Black plastic shell
SN77	A77	SZX25-0039009-0001.C077	Black soft plastic ring
SN78	A78	SZX25-0039009-0001.C078	Black soft plastic ring
SN79	A79	SZX25-0039009-0001.C079	Translucent white soft plastic ring
SN80	A80	SZX25-0039009-0001.C080	Silvery metal screw
SN81	A81	SZX25-0039009-0001.C081	Silvery metal shell
SN82	A82	SZX25-0039009-0001.C082	Silvery metal pin
SN83	A83	SZX25-0039009-0001.C083	Silvery metal pin
SN84	A84	SZX25-0039009-0001.C084	Black soft plastic ring
SN85	A85	SZX25-0039009-0001.C085	Black plastic shell
SN86	A86	SZX25-0039009-0001.C086	Black plastic (cable jacket)
SN87	A87	SZX25-0039009-0001.C087	Red dry glue
SN88	A88	SZX25-0039009-0001.C088	Cream plastic ring
SN89	A89	SZX25-0039009-0001.C089	Silvery metal pin
SN90	A90	SZX25-0039009-0001.C090	Blue plastic shell
SN91	A91	SZX25-0039009-0001.C091	Blue plastic (wire insulation)
SN92	A92	SZX25-0039009-0001.C092	Yellow -green plastic (wire insulation)
SN93	A93	SZX25-0039009-0001.C093	Brown plastic (wire insulation)
SN94	A94	SZX25-0039009-0001.C094	White material
SN95	A95	SZX25-0039009-0001.C095	Silvery metal screw



Unless otherwise agreed in writing, this document is issued by the Company subject to its General Conditions of Service printed overleaf, available on request or accessible at <https://www.sgs.com/en/Terms-and-Conditions>. Attention is drawn to the limitation of liability, indemnification and jurisdiction issues defined therein. Any holder of this document is advised that information contained hereon reflects the Company's findings at the time of its intervention only and within the limits of Client's instructions, if any. The Company's sole responsibility is to its Client and this document does not exonerate parties to a transaction from exercising all their rights and obligations under the transaction documents. This document cannot be reproduced except in full, without prior written approval of the Company. Any unauthorized alteration, forgery or falsification of the content or appearance of this document is unlawful and offenders may be prosecuted to the fullest extent of the law. Unless otherwise stated the results shown in this test report refer only to the sample(s) tested.

Attention: To check the authenticity of testing /inspection report & certificate, please contact us at telephone: (86-755) 8307 1443, or email: CN.Doccheck@sgs.com

SGS-standards Technical Services Co., Ltd.
Shenzhen Branch

Room 101-901, Plant 4 & Room 101, Plant 3 & Room 301-501, Plant 3, Jiangnan (Bantian) Industrial Plant Area, No. 430, Jihua Road, Bantian Community, Bantian Street, Longgang District, Shenzhen, Guangdong, China 518129 www.sgs.com
中国·广东·深圳市龙岗区坂田街道坂田社区吉华路430号江澜(坂田)工业厂区厂房4101-901、2号101、3号101、3号301-501 邮编:518129 t:(86-755) 25328888 sgs.china@sgs.com

SN ID	Sample No.	SGS Sample ID	Description
SN96	A96	SZX25-0039009-0001.C096	Silvery metal ring
SN97	A97	SZX25-0039009-0001.C097	Silvery metal plate
SN98	A98	SZX25-0039009-0001.C098	Red plastic (wire insulation)
SN99	A99	SZX25-0039009-0001.C099	Silvery metal part
SN100	A100	SZX25-0039009-0001.C100	Silvery metal part
SN101	A101	SZX25-0039009-0001.C101	Black plastic (wire insulation)
SN102	A102	SZX25-0039009-0001.C102	Black plastic heat shrinkable tube
SN103	A103	SZX25-0039009-0001.C103	Silvery metal screw
SN104	A104	SZX25-0039009-0001.C104	Silvery plastic label with multi-color printing
SN105	A105	SZX25-0039009-0001.C105	Silvery metal screw
SN106	A106	SZX25-0039009-0001.C106	Silvery metal plate
SN107	A107	SZX25-0039009-0001.C107	Silvery metal plate
SN108	A108	SZX25-0039009-0001.C108	Silvery metal ring
SN109	A109	SZX25-0039009-0001.C109	Silvery metal shell
SN110	A110	SZX25-0039009-0001.C110	Silvery metal screw
SN111	A111	SZX25-0039009-0001.C111	Silvery metal plate
SN112	A112	SZX25-0039009-0001.C112	Silvery metal ring
SN113	A113	SZX25-0039009-0001.C113	Silvery metal screw
SN114	A114	SZX25-0039009-0001.C114	Gray material
SN115	A115	SZX25-0039009-0001.C115	Translucent white plastic sheet with adhesive glue
SN116	A116	SZX25-0039009-0001.C116	Pink material
SN117	A117	SZX25-0039009-0001.C117	Cream material
SN118	A118	SZX25-0039009-0001.C118	Light pink plastic sheet with white fiber
SN119	A119	SZX25-0039009-0001.C119	Silvery metal part
SN120	A120	SZX25-0039009-0001.C120	White material
SN121	A121	SZX25-0039009-0001.C121	White material
SN122	A122	SZX25-0039009-0001.C122	Silvery metal part
SN123	A123	SZX25-0039009-0001.C123	White dry glue
SN124	A124	SZX25-0039009-0001.C124	Green capacitor body
SN125	A125	SZX25-0039009-0001.C125	Red material
SN126	A126	SZX25-0039009-0001.C126	Transparent yellow plastic adhesive tape
SN127	A127	SZX25-0039009-0001.C127	Black rubber stopper
SN128	A128	SZX25-0039009-0001.C128	Black rubber stopper
SN129	A129	SZX25-0039009-0001.C129	Dark blue plastic sheet with golden printing
SN130	A130	SZX25-0039009-0001.C130	Black plastic sheet with silvery printing
SN131	A131	SZX25-0039009-0001.C131	Black plastic sheet with white printing
SN132	A132	SZX25-0039009-0001.C132	Black rubber stopper
SN133	A133	SZX25-0039009-0001.C133	Yellow dry glue
SN134	A134	SZX25-0039009-0001.C134	Yellow plastic shell with black printing
SN135	A135	SZX25-0039009-0001.C135	Yellow dry glue
SN136	A136	SZX25-0039009-0001.C136	Yellow plastic shell with black printing
SN137	A137	SZX25-0039009-0001.C137	Black plastic part
SN138	A138	SZX25-0039009-0001.C138	Black plastic shell with cream printing
SN139	A139	SZX25-0039009-0001.C139	Green material
SN140	A140	SZX25-0039009-0001.C140	Black plastic frame
SN141	A141	SZX25-0039009-0001.C141	Transparent yellow plastic adhesive tape



Unless otherwise agreed in writing, this document is issued by the Company subject to its General Conditions of Service printed overleaf, available on request or accessible at <https://www.sgs.com/en/Terms-and-Conditions>. Attention is drawn to the limitation of liability, indemnification and jurisdiction issues defined therein. Any holder of this document is advised that information contained hereon reflects the Company's findings at the time of its intervention only and within the limits of Client's instructions, if any. The Company's sole responsibility is to its Client and this document does not exonerate parties to a transaction from exercising all their rights and obligations under the transaction documents. This document cannot be reproduced except in full, without prior written approval of the Company. Any unauthorized alteration, forgery or falsification of the content or appearance of this document is unlawful and offenders may be prosecuted to the fullest extent of the law. Unless otherwise stated the results shown in this test report refer only to the sample(s) tested.

Attention: To check the authenticity of testing / inspection report & certificate, please contact us at telephone: (86-755) 8307 1443, or email: CN.Doccheck@sgs.com

SGS-CSI Standards Technical Services Co., Ltd.
Shenzhen Branch

Room 101-901, Plant 4 & Room 101, Plant 2 & Room 101, Plant 3 & Room 301-501, Plant 3, Jiangnan (Bantian) Industrial Plant Area, No. 430, Jihua Road, Bantian Community, Bantian Street, Longgang District, Shenzhen, Guangdong, China 518129 www.sgs.com
中国·广东·深圳市龙岗区坂田街道坂田社区吉华路430号江楠(坂田)工业厂区厂房401-901、2号101、3号101、3号301-501 邮编:518129 t:(86-755)25328888 sgs.china@sgs.com

SN ID	Sample No.	SGS Sample ID	Description
SN142	A142	SZX25-0039009-0001.C142	Coppery foil with adhesive glue
SN143	A143	SZX25-0039009-0001.C143	Silvery metal solder
SN144	A144	SZX25-0039009-0001.C144	Green -yellow hard board
SN145	A145	SZX25-0039009-0001.C145	Black material
SN146	A146	SZX25-0039009-0001.C146	Green hard board
SN147	A147	SZX25-0039009-0001.C147	Black plastic shell
SN148	A148	SZX25-0039009-0001.C148	Silvery metal part
SN149	A149	SZX25-0039009-0001.C149	Black body
SN150	A150	SZX25-0039009-0001.C150	Translucent yellow plastic cover
SN151	A151	SZX25-0039009-0001.C151	Black body
SN152	A152	SZX25-0039009-0001.C152	Black body
SN153	A153	SZX25-0039009-0001.C153	White plastic (wire insulation)
SN154	A154	SZX25-0039009-0001.C154	White plastic shell with black printing
SN155	A155	SZX25-0039009-0001.C155	Silvery metal plate
SN156	A156	SZX25-0039009-0001.C156	Light golden metal plate
SN157	A157	SZX25-0039009-0001.C157	Coppery metal plate
SN158	A158	SZX25-0039009-0001.C158	Coppery metal part with silvery surface
SN159	A159	SZX25-0039009-0001.C159	Black plastic part with dry glue
SN160	A160	SZX25-0039009-0001.C160	Coppery metal part with brown surface
SN161	A161	SZX25-0039009-0001.C161	Black dry glue
SN162	A162	SZX25-0039009-0001.C162	Transparent yellow plastic adhesive tape
SN163	A163	SZX25-0039009-0001.C163	Black plastic frame
SN164	A164	SZX25-0039009-0001.C164	White paper label with black printing
SN165	A165	SZX25-0039009-0001.C165	Black dry glue
SN166	A166	SZX25-0039009-0001.C166	Translucent white plastic tube
SN167	A167	SZX25-0039009-0001.C167	Transparent plastic (cable jacket)
SN168	A168	SZX25-0039009-0001.C168	Yellow enameled wire
SN169	A169	SZX25-0039009-0001.C169	Yellow enameled wire
SN170	A170	SZX25-0039009-0001.C170	Transparent plastic (cable jacket)
SN171	A171	SZX25-0039009-0001.C171	Black body
SN172	A172	SZX25-0039009-0001.C172	Black body
SN173	A173	SZX25-0039009-0001.C173	Green "PCB"
SN174	A174	SZX25-0039009-0001.C174	Silvery metal solder
SN175	A175	SZX25-0039009-0001.C175	Black body
SN176	A176	SZX25-0039009-0001.C176	Black body
SN177	A177	SZX25-0039009-0001.C177	Black body
SN178	A178	SZX25-0039009-0001.C178	Black body
SN179	A179	SZX25-0039009-0001.C179	Black body
SN180	A180	SZX25-0039009-0001.C180	Black body
SN181	A181	SZX25-0039009-0001.C181	Black body
SN182	A182	SZX25-0039009-0001.C182	Black body
SN183	A183	SZX25-0039009-0001.C183	Black body
SN184	A184	SZX25-0039009-0001.C184	Black body
SN185	A185	SZX25-0039009-0001.C185	Black body
SN186	A186	SZX25-0039009-0001.C186	Cream plastic part
SN187	A187	SZX25-0039009-0001.C187	Silvery metal screw
SN188	A188	SZX25-0039009-0001.C188	Yellow -green plastic (wire insulation)
SN189	A189	SZX25-0039009-0001.C189	Black plastic heat shrinkable tube
SN190	A190	SZX25-0039009-0001.C190	Yellow -green plastic (wire insulation)



Unless otherwise agreed in writing, this document is issued by the Company subject to its General Conditions of Service printed overleaf, available on request or accessible at <https://www.sgs.com/en/Terms-and-Conditions>. Attention is drawn to the limitation of liability, indemnification and jurisdiction issues defined therein. Any holder of this document is advised that information contained hereon reflects the Company's findings at the time of its intervention only and within the limits of Client's instructions, if any. The Company's sole responsibility is to its Client and this document does not exonerate parties to a transaction from exercising all their rights and obligations under the transaction documents. This document cannot be reproduced except in full, without prior written approval of the Company. Any unauthorized alteration, forgery or falsification of the content or appearance of this document is unlawful and offenders may be prosecuted to the fullest extent of the law. Unless otherwise stated the results shown in this test report refer only to the sample(s) tested.

Attention: To check the authenticity of testing /inspection report & certificate, please contact us at telephone: (86-755) 8307 1443, or email: CN.Doccheck@sgs.com

SGS-CS Standards Technical Services Co., Ltd.
Shenzhen Branch

Room 101-901, Plant 4 & Room 101, Plant 3 & Room 301-501, Plant 3, Jiangnan (Bantian) Industrial Plant Area, No. 430, Jihua Road, Bantian Community, Bantian Street, Longgang District, Shenzhen, Guangdong, China 518129 www.sgs.com.cn
中国·广东·深圳市龙岗区坂田街道坂田社区吉华路430号江楠(坂田)工业厂区厂房4号101-901、2号101、3号101、3号301-501 邮编:518129 t:(86-755) 25328888 sgs.china@sgs.com

SN ID	Sample No.	SGS Sample ID	Description
SN191	A191	SZX25-0039009-0001.C191	Silvery metal plate
SN192	A192	SZX25-0039009-0001.C192	Silvery metal ring
SN193	A193	SZX25-0039009-0001.C193	White plastic (wire insulation) with pink printing
SN194	A194	SZX25-0039009-0001.C194	White fiber tube
SN195	A195.1	SZX25-0039009-0001.C195.C001	Silvery metal nut (A195 improved sample submitted by 2025-12-5)
SN196	A196	SZX25-0039009-0001.C196	White plastic shell
SN197	A197	SZX25-0039009-0001.C197	Silvery metal pin
SN198	A198	SZX25-0039009-0001.C198	Black plastic heat shrinkable tube
SN199	A199.1	SZX25-0039009-0001.C199.C001	Black rubber ring (A199 improved sample submitted by 2025-12-5)
SN200	A200	SZX25-0039009-0001.C200	Silvery metal part
SN201	A201	SZX25-0039009-0001.C201	White plastic part
SN202	A202	SZX25-0039009-0001.C202	Transparent plastic shell
SN203	A203	SZX25-0039009-0001.C203	Silvery metal spring
SN204	A204	SZX25-0039009-0001.C204	Silvery metal shaft
SN205	A205	SZX25-0039009-0001.C205	Translucent white soft plastic part
SN206	A206.1	SZX25-0039009-0001.C206.C001	Silvery metal shell (A206 improved sample submitted by 2025-12-5)
SN207	A207	SZX25-0039009-0001.C207	Light gray plastic shell
SN208	A208	SZX25-0039009-0001.C208	Cream plastic cover
SN209	A209	SZX25-0039009-0001.C209	Black dry glue
SN210	A210	SZX25-0039009-0001.C210	Silvery metal pin
SN211	A211	SZX25-0039009-0001.C211	Silvery metal solder
SN212	A212	SZX25-0039009-0001.C212	White "PCB"
SN213	A213	SZX25-0039009-0001.C213	Black plastic heat shrinkable tube
SN214	A214	SZX25-0039009-0001.C214	Green "PCB"
SN215	A215	SZX25-0039009-0001.C215	Silvery metal part
SN216	A216	SZX25-0039009-0001.C216	Black rubber stopper
SN217	A217	SZX25-0039009-0001.C217	Black plastic sheet
SN218	A218	SZX25-0039009-0001.C218	Cream plastic shell
SN219	A219	SZX25-0039009-0001.C219	Golden metal pin
SN220	A220	SZX25-0039009-0001.C220	Black body
SN221	A221	SZX25-0039009-0001.C221	Black body
SN222	A222	SZX25-0039009-0001.C222	Black body
SN223	A223	SZX25-0039009-0001.C223	Silvery metal shell
SN224	A224	SZX25-0039009-0001.C224	Black body
SN225	A225	SZX25-0039009-0001.C225	White plastic label with multi-color printing
SN226	A226	SZX25-0039009-0001.C226	White plastic label with black printing
SN227	A227	SZX25-0039009-0001.C227	Black body
SN228	A228	SZX25-0039009-0001.C228	Black body
SN229	A229	SZX25-0039009-0001.C229	Black body
SN230	A230	SZX25-0039009-0001.C230	Green "PCB"
SN231	A231	SZX25-0039009-0001.C231	Silvery metal solder
SN232	A232	SZX25-0039009-0001.C232	Black body
SN233	A233	SZX25-0039009-0001.C233	Silvery metal pin with golden surface
SN234	A234	SZX25-0039009-0001.C234	Cream plastic shell



Unless otherwise agreed in writing, this document is issued by the Company subject to its General Conditions of Service printed overleaf, available on request or accessible at <https://www.sgs.com/en/Terms-and-Conditions>. Attention is drawn to the limitation of liability, indemnification and jurisdiction issues defined therein. Any holder of this document is advised that information contained hereon reflects the Company's findings at the time of its intervention only and within the limits of Client's instructions, if any. The Company's sole responsibility is to its Client and this document does not exonerate parties to a transaction from exercising all their rights and obligations under the transaction documents. This document cannot be reproduced except in full, without prior written approval of the Company. Any unauthorized alteration, forgery or falsification of the content or appearance of this document is unlawful and offenders may be prosecuted to the fullest extent of the law. Unless otherwise stated the results shown in this test report refer only to the sample(s) tested.

Attention: To check the authenticity of testing / inspection report & certificate, please contact us at telephone: (86-755) 8307 1443, or email: CN.Doccheck@sgs.com

SGS-CSI Standards Technical Services Co., Ltd.
Shenzhen Branch / 深圳分公司

Room 101-901, Plant 4 & Room 101, Plant 2 & Room 101, Plant 3 & Room 301-501, Plant 3, Jiangnan (Bantian) Industrial Plant Area, No. 430, Jilua Road, Bantian Community, Bantian Street, Longgang District, Shenzhen, Guangdong, China 518129 www.sgs.com
中国·广东·深圳市龙岗区坂田街道坂田社区吉华路430号江楠(坂田)工业厂区厂房4号101-901、2号101、3号101、3号301-501 邮编:518129 t:(86-755) 25328888 sgs.china@sgs.com

SN ID	Sample No.	SGS Sample ID	Description
SN235	A235	SZX25-0039009-0001.C235	Silvery metal part with black surface
SN236	A236	SZX25-0039009-0001.C236	Black plastic heat shrinkable tube
SN237	A237	SZX25-0039009-0001.C237	Silvery metal ring with black surface
SN238	A238	SZX25-0039009-0001.C238	Black plastic shell
SN239	A239	SZX25-0039009-0001.C239	Black plastic part
SN240	A240.1	SZX25-0039009-0001.C240.C001	Golden metal part (A240 improved sample submitted by 2025-12-5)
SN241	A241	SZX25-0039009-0001.C241	Black plastic shell
SN242	A242	SZX25-0039009-0001.C242	Silvery metal pin with golden surface
SN243	A243	SZX25-0039009-0001.C243	Black plastic part
SN244	A244.1	SZX25-0039009-0001.C244.C001	Silvery metal wire (solder) (A244 improved sample submitted by 2025-10-29)
SN245	A245	SZX25-0039009-0001.C245	Black soft plastic ring
SN246	A246	SZX25-0039009-0001.C246	Silvery metal screw
SN247	A247	SZX25-0039009-0001.C247	Black plastic shell
SN248	A248	SZX25-0039009-0001.C248	Golden metal part
SN249	A249	SZX25-0039009-0001.C249	Silvery metal part
SN250	A250	SZX25-0039009-0001.C250	White soft plastic ring
SN251	A251	SZX25-0039009-0001.C251	Black plastic frame
SN252	A252.1	SZX25-0039009-0001.C252.C001	White -black "LED" body (A252 improved sample submitted by 2025-12-5)
SN253	A253	SZX25-0039009-0001.C253	Silvery metal screw with black surface
SN254	A254.1	SZX25-0039009-0001.C254.C001	Black dry glue (A254 improved sample submitted by 2025-12-5)
SN255	A255	SZX25-0039009-0001.C255	Green "PCB"
SN256	A256	SZX25-0039009-0001.C256	Black body
SN257	A257	SZX25-0039009-0001.C257	Black body
SN258	A258	SZX25-0039009-0001.C258	Silvery metal part
SN259	A259	SZX25-0039009-0001.C259	Black body
SN260	A260	SZX25-0039009-0001.C260	Black body
SN261	A261	SZX25-0039009-0001.C261	Black body
SN262	A262.1	SZX25-0039009-0001.C262.C001	Silvery metal wire (solder) (A262 improved sample submitted by 2025-10-29)
SN263	A263	SZX25-0039009-0001.C263	Silvery metal part
SN264	A264	SZX25-0039009-0001.C264	Silvery metal screw
SN265	A265	SZX25-0039009-0001.C265	Silvery magnet
SN266	A266	SZX25-0039009-0001.C266	Silvery metal shell
SN267	A267	SZX25-0039009-0001.C267	Translucent white soft plastic ring



Unless otherwise agreed in writing, this document is issued by the Company subject to its General Conditions of Service printed overleaf, available on request or accessible at <https://www.sgs.com/en/Terms-and-Conditions>. Attention is drawn to the limitation of liability, indemnification and jurisdiction issues defined therein. Any holder of this document is advised that information contained hereon reflects the Company's findings at the time of its intervention only and within the limits of Client's instructions, if any. The Company's sole responsibility is to its Client and this document does not exonerate parties to a transaction from exercising all their rights and obligations under the transaction documents. This document cannot be reproduced except in full, without prior written approval of the Company. Any unauthorized alteration, forgery or falsification of the content or appearance of this document is unlawful and offenders may be prosecuted to the fullest extent of the law. Unless otherwise stated the results shown in this test report refer only to the sample(s) tested.

Attention: To check the authenticity of testing /inspection report & certificate, please contact us at telephone: (86-755) 8307 1443, or email: CN.Doccheck@sgs.com

SGS-CSI Standards Technical Services Co., Ltd.
Shenzhen Branch

Room 101-901, Plant 4 & Room 101, Plant 2 & Room 101, Plant 3 & Room 301-501, Plant 3, Jianghao (Bantian) Industrial Plant Area, No. 430, Jihua Road, Bantian Community, Bantian Street, Longgang District, Shenzhen, Guangdong, China 518129 www.sgs.com
中国·广东·深圳市龙岗区坂田街道坂田社区吉华路430号江豪(坂田)工业厂区厂房4号101-901、2号101、3号301-501 邮编:518129 t:(86-755) 25328888 sgs.china@sgs.com

Verification Result(s):

In accordance with the result of material risk assessment, the following disjointed parts in the submitted sample have been verified. (Unless otherwise specified, the unit is mg/kg).

Test Item(s)	A1	A2	A3	A4	A5	A6	A7	A8
Pb	BL	BL	BL	BL	BL	BL	BL	BL
Hg	BL	BL	BL	BL	BL	BL	BL	BL
Cd	BL	BL	BL	BL	BL	BL	BL	BL
Cr(VI)▼	BL	ND	ND	ND	ND	ND	ND	ND
PBB	---	---	---	---	---	---	---	---
PBDE	---	---	---	---	---	---	---	---
DEHP	---	---	---	---	---	---	---	---
BBP	---	---	---	---	---	---	---	---
DBP	---	---	---	---	---	---	---	---
DIBP	---	---	---	---	---	---	---	---
Conclusion	PASS	PASS	PASS	PASS	PASS	PASS	PASS	PASS

Test Item(s)	A9	A10	A11	A12	A13	A14	A15	A16
Pb	BL	BL	BL	BL	BL	BL	BL	BL
Hg	BL	BL	BL	BL	BL	BL	BL	BL
Cd	BL	BL	BL	BL	BL	BL	BL	BL
Cr(VI)▼	BL	BL	BL	BL	BL	BL	BL	BL
PBB	BL	BL	---	BL	---	---	---	BL
PBDE	BL	BL	---	BL	---	---	---	BL
DEHP	BL	BL	---	BL	---	---	---	ND
BBP	BL	BL	---	BL	---	---	---	ND
DBP	BL	BL	---	BL	---	---	---	ND
DIBP	BL	BL	---	BL	---	---	---	ND
Conclusion	PASS	PASS	PASS	PASS	PASS	PASS	PASS	PASS

Test Item(s)	A17	A18	A19	A20	A21	A22	A23	A24
Pb	BL	BL	BL	BL	BL	BL	BL	BL
Hg	BL	BL	BL	BL	BL	BL	BL	BL
Cd	BL	BL	BL	BL	BL	BL	BL	BL
Cr(VI)▼	ND	ND	BL	BL	BL	BL	BL	BL
PBB	---	---	BL	BL	BL	BL	BL	BL
PBDE	---	---	BL	BL	BL	BL	BL	BL
DEHP	---	---	BL	BL	BL	BL	BL	BL
BBP	---	---	BL	BL	BL	BL	BL	BL
DBP	---	---	BL	BL	BL	BL	BL	BL
DIBP	---	---	BL	BL	BL	BL	BL	BL
Conclusion	PASS	PASS	PASS	PASS	PASS	PASS	PASS	PASS

Test Item(s)	A25	A26	A27	A28	A29	A30	A31	A32
Pb	BL	BL	BL	BL	BL	BL	BL	BL
Hg	BL	BL	BL	BL	BL	BL	BL	BL
Cd	BL	BL	BL	BL	BL	BL	BL	BL
Cr(VI)▼	BL	BL	BL	BL	BL	BL	BL	BL



SGS-CSI Standards Technical Services Co., Ltd.
Shenzhen Branch

Unless otherwise agreed in writing, this document is issued by the Company subject to its General Conditions of Service printed overleaf, available on request or accessible at <https://www.sgs.com/en/Terms-and-Conditions>. Attention is drawn to the limitation of liability, indemnification and jurisdiction issues defined therein. Any holder of this document is advised that information contained hereon reflects the Company's findings at the time of its intervention only and within the limits of Client's instructions, if any. The Company's sole responsibility is to its Client and this document does not exonerate parties to a transaction from exercising all their rights and obligations under the transaction documents. This document cannot be reproduced except in full, without prior written approval of the Company. Any unauthorized alteration, forgery or falsification of the content or appearance of this document is unlawful and offenders may be prosecuted to the fullest extent of the law. Unless otherwise stated the results shown in this test report refer only to the sample(s) tested.

Attention: To check the authenticity of testing /inspection report & certificate, please contact us at telephone: (86-755) 8307 1443, or email: CN.Doccheck@sgs.com

Room 101-901, Plant 4 & Room 101, Plant 2 & Room 101, Plant 3 & Room 301-501, Plant 3, Jianghao (Bantian) Industrial Plant Area, No. 430, Jihua Road, Bantian Community, Bantian Street, Longgang District, Shenzhen, Guangdong, China 518129 www.sgs.com.cn
中国·广东·深圳市龙岗区坂田街道坂田社区吉华路430号江豪(坂田)工业厂区厂房4号101-901、2号101、3号101、3号301-501 邮编:518129 t:(86-755) 25328888 sgs.china@sgs.com

Test Item(s)	A25	A26	A27	A28	A29	A30	A31	A32
PBB	BL	BL	BL	BL	BL	BL	BL	BL
PBDE	BL	BL	BL	BL	BL	BL	BL	BL
DEHP	BL	BL	BL	BL	ND	ND	ND	ND
BBP	BL	BL	BL	BL	ND	ND	ND	ND
DBP	BL	BL	BL	BL	ND	ND	ND	ND
DIBP	BL	BL	BL	BL	ND	ND	ND	ND
Conclusion	PASS	PASS	PASS	PASS	PASS	PASS	PASS	PASS

Test Item(s)	A33	A34	A35	A36	A37	A38	A39	A40
Pb	BL	BL	BL	BL	BL	BL	BL	BL
Hg	BL	BL	BL	BL	BL	BL	BL	BL
Cd	BL	BL	BL	BL	BL	BL	BL	BL
Cr(VI)▼	BL	BL	BL	BL	BL	BL	BL	BL
PBB	BL	BL	BL	BL	BL	---	BL	ND
PBDE	BL	BL	BL	BL	BL	---	BL	ND
DEHP	ND	ND	ND	ND	BL	---	BL	ND
BBP	ND	ND	ND	ND	BL	---	BL	ND
DBP	ND	ND	ND	ND	BL	---	BL	ND
DIBP	ND	ND	ND	ND	BL	---	BL	ND
Conclusion	PASS	PASS	PASS	PASS	PASS	PASS	PASS	PASS

Test Item(s)	A41	A42	A43	A44	A45	A46	A47	A48
Pb	BL	BL	BL	BL	BL	BL	BL	BL
Hg	BL	BL	BL	BL	BL	BL	BL	BL
Cd	BL	BL	BL	BL	BL	BL	BL	BL
Cr(VI)▼	ND	BL	BL	BL	ND	BL	BL	BL
PBB	---	ND	ND	ND	---	BL	ND	---
PBDE	---	ND	ND	ND	---	BL	ND	---
DEHP	---	ND	ND	ND	---	BL	ND	---
BBP	---	ND	ND	ND	---	BL	ND	---
DBP	---	ND	ND	ND	---	BL	ND	---
DIBP	---	ND	ND	ND	---	BL	ND	---
Conclusion	PASS	PASS	PASS	PASS	PASS	PASS	PASS	PASS

Test Item(s)	A49	A50	A51	A52	A53	A54	A55	A56
Pb	BL	BL	BL	BL	BL	BL	BL	BL
Hg	BL	BL	BL	BL	BL	BL	BL	BL
Cd	BL	BL	BL	BL	BL	BL	BL	BL
Cr(VI)▼	BL	BL	BL	BL	BL	BL	BL	ND
PBB	BL	---	BL	BL	BL	---	---	---
PBDE	BL	---	BL	BL	BL	---	---	---
DEHP	BL	---	BL	BL	BL	---	---	---
BBP	BL	---	BL	BL	BL	---	---	---
DBP	BL	---	BL	BL	BL	---	---	---
DIBP	BL	---	BL	BL	BL	---	---	---



Unless otherwise agreed in writing, this document is issued by the Company subject to its General Conditions of Service printed overleaf, available on request or accessible at <https://www.sgs.com/en/Terms-and-Conditions>. Attention is drawn to the limitation of liability, indemnification and jurisdiction issues defined therein. Any holder of this document is advised that information contained hereon reflects the Company's findings at the time of its intervention only and within the limits of Client's instructions, if any. The Company's sole responsibility is to its Client and this document does not exonerate parties to a transaction from exercising all their rights and obligations under the transaction documents. This document cannot be reproduced except in full, without prior written approval of the Company. Any unauthorized alteration, forgery or falsification of the content or appearance of this document is unlawful and offenders may be prosecuted to the fullest extent of the law. Unless otherwise stated the results shown in this test report refer only to the sample(s) tested.

Attention: To check the authenticity of testing /inspection report & certificate, please contact us at telephone: (86-755) 8307 1443, or email: CN.Doccheck@sgs.com

SGS-CHINA Inspection & Testing Services Co., Ltd.
Shenzhen Branch

Room 101-901, Plant 4 & Room 101, Plant 2 & Room 101, Plant 3, Jiangnan (Bantian) Industrial Plant Area, No. 430, Jihua Road, Bantian Community, Bantian Street, Longgang District, Shenzhen, Guangdong, China 518129 www.sgs.com.cn
中国·广东·深圳市龙岗区坂田街道坂田社区吉华路430号江澜(坂田)工业厂区厂房4号101-901、2号101、3号101、3号301-501 邮编:518129 t:(86-755) 25328888 sgs.china@sgs.com

Test Item(s)	A49	A50	A51	A52	A53	A54	A55	A56
Conclusion	PASS	PASS	PASS	PASS	PASS	PASS	PASS	PASS

Test Item(s)	A57	A58	A59	A60	A61	A62	A63	A64
Pb	BL	BL	BL	BL	BL	BL	BL	BL
Hg	BL	BL	BL	BL	BL	BL	BL	BL
Cd	BL	BL	BL	BL	BL	BL	BL	BL
Cr(VI)▼	ND	BL	BL	BL	BL	BL	BL	BL
PBB	---	BL	BL	BL	BL	BL	BL	---
PBDE	---	BL	BL	BL	BL	BL	BL	---
DEHP	---	BL	ND	BL	ND	ND	ND	---
BBP	---	BL	ND	BL	ND	ND	ND	---
DBP	---	BL	ND	BL	ND	ND	ND	---
DIBP	---	BL	ND	BL	ND	ND	ND	---
Conclusion	PASS	PASS	PASS	PASS	PASS	PASS	PASS	PASS

Test Item(s)	A65	A66	A67	A68	A69	A70	A71	A72
Pb	BL	BL	BL	BL	BL	BL	BL	BL
Hg	BL	BL	BL	BL	BL	BL	BL	BL
Cd	BL	BL	BL	BL	BL	BL	BL	BL
Cr(VI)▼	BL	BL	BL	BL	BL	BL	BL	BL
PBB	BL	ND	BL	BL	BL	BL	ND	ND
PBDE	BL	ND	BL	BL	BL	BL	ND	ND
DEHP	BL	ND	ND	ND	ND	ND	ND	ND
BBP	BL	ND	ND	ND	ND	ND	ND	ND
DBP	BL	ND	ND	ND	ND	ND	ND	ND
DIBP	BL	ND	ND	ND	ND	ND	ND	ND
Conclusion	PASS	PASS	PASS	PASS	PASS	PASS	PASS	PASS

Test Item(s)	A73	A74	A75	A76	A77	A78	A79	A80
Pb	BL	BL	BL	BL	BL	BL	BL	BL
Hg	BL	BL	BL	BL	BL	BL	BL	BL
Cd	BL	BL	BL	BL	BL	BL	BL	BL
Cr(VI)▼	BL	BL	ND	BL	BL	BL	BL	ND
PBB	ND	---	---	BL	BL	BL	BL	---
PBDE	ND	---	---	BL	BL	BL	BL	---
DEHP	ND	---	---	BL	BL	BL	BL	---
BBP	ND	---	---	BL	BL	BL	BL	---
DBP	ND	---	---	BL	BL	BL	BL	---
DIBP	ND	---	---	BL	BL	BL	BL	---
Conclusion	PASS	PASS	PASS	PASS	PASS	PASS	PASS	PASS

Test Item(s)	A81	A82	A83	A84	A85	A86	A87	A88
Pb	<40000▲	BL	BL	BL	BL	BL	BL	BL
Hg	BL	BL	BL	BL	BL	BL	BL	BL



Unless otherwise agreed in writing, this document is issued by the Company subject to its General Conditions of Service printed overleaf, available on request or accessible at <https://www.sgs.com/en/Terms-and-Conditions>. Attention is drawn to the limitation of liability, indemnification and jurisdiction issues defined therein. Any holder of this document is advised that information contained hereon reflects the Company's findings at the time of its intervention only and within the limits of Client's instructions, if any. The Company's sole responsibility is to its Client and this document does not exonerate parties to a transaction from exercising all their rights and obligations under the transaction documents. This document cannot be reproduced except in full, without prior written approval of the Company. Any unauthorized alteration, forgery or falsification of the content or appearance of this document is unlawful and offenders may be prosecuted to the fullest extent of the law. Unless otherwise stated the results shown in this test report refer only to the sample(s) tested.

Attention: To check the authenticity of testing /inspection report & certificate, please contact us at telephone: (86-755) 8307 1443, or email: CN.Doccheck@sgs.com

SGS-CHINA Standards Technical Services Co., Ltd.
Shenzhen Branch

Room 101-901, Plant 4 & Room 101, Plant 2 & Room 101, Plant 3 & Room 301-501, Plant 3, Jianghao (Bantian) Industrial Plant Area, No. 430, Jihua Road, Bantian Community, Bantian Street, Longgang District, Shenzhen, Guangdong, China 518129 www.sgs.com.cn
中国·广东·深圳市龙岗区坂田街道坂田社区吉华路430号江豪(坂田)工业厂区厂房4号101-901、2号101、3号101、3号301-501 邮编:518129 t:(86-755) 25328888 sgs.china@sgs.com

Test Item(s)	A81	A82	A83	A84	A85	A86	A87	A88
Cd	BL	BL	BL	BL	BL	BL	BL	BL
Cr(VI)▼	BL	BL	BL	BL	BL	BL	BL	BL
PBB	---	---	---	BL	ND	BL	BL	BL
PBDE	---	---	---	BL	ND	BL	BL	BL
DEHP	---	---	---	BL	ND	ND	BL	BL
BBP	---	---	---	BL	ND	ND	BL	BL
DBP	---	---	---	BL	ND	ND	BL	BL
DIBP	---	---	---	BL	ND	ND	BL	BL
Conclusion	PASS	PASS	PASS	PASS	PASS	PASS	PASS	PASS

Test Item(s)	A89	A90	A91	A92	A93	A94	A95	A96
Pb	BL	BL	BL	BL	BL	BL	BL	BL
Hg	BL	BL	BL	BL	BL	BL	BL	BL
Cd	BL	BL	BL	BL	BL	BL	BL	BL
Cr(VI)▼	BL	BL	BL	BL	BL	BL	ND	ND
PBB	---	BL	BL	BL	BL	BL	---	---
PBDE	---	BL	BL	BL	BL	BL	---	---
DEHP	---	BL	ND	ND	ND	ND	---	---
BBP	---	BL	ND	ND	ND	ND	---	---
DBP	---	BL	ND	ND	ND	ND	---	---
DIBP	---	BL	ND	ND	ND	ND	---	---
Conclusion	PASS	PASS	PASS	PASS	PASS	PASS	PASS	PASS

Test Item(s)	A97	A98	A99	A100	A101	A102	A103	A104
Pb	BL	BL	BL	BL	BL	BL	BL	BL
Hg	BL	BL	BL	BL	BL	BL	BL	BL
Cd	BL	BL	BL	BL	BL	BL	BL	BL
Cr(VI)▼	ND	BL	BL	BL	BL	BL	ND	BL
PBB	---	BL	---	---	BL	ND	---	BL
PBDE	---	BL	---	---	BL	ND	---	BL
DEHP	---	ND	---	---	ND	ND	---	BL
BBP	---	ND	---	---	ND	ND	---	BL
DBP	---	ND	---	---	ND	ND	---	BL
DIBP	---	ND	---	---	ND	ND	---	BL
Conclusion	PASS	PASS	PASS	PASS	PASS	PASS	PASS	PASS

Test Item(s)	A105	A106	A107	A108	A109	A110	A111	A112
Pb	BL	BL	BL	BL	BL	BL	BL	BL
Hg	BL	BL	BL	BL	BL	BL	BL	BL
Cd	BL	BL	BL	BL	BL	BL	BL	BL
Cr(VI)▼	BL	ND	BL	BL	BL	ND	ND	ND
PBB	---	---	---	---	---	---	---	---
PBDE	---	---	---	---	---	---	---	---
DEHP	---	---	---	---	---	---	---	---
BBP	---	---	---	---	---	---	---	---



Unless otherwise agreed in writing, this document is issued by the Company subject to its General Conditions of Service printed overleaf, available on request or accessible at <https://www.sgs.com/en/Terms-and-Conditions>. Attention is drawn to the limitation of liability, indemnification and jurisdiction issues defined therein. Any holder of this document is advised that information contained hereon reflects the Company's findings at the time of its intervention only and within the limits of Client's instructions, if any. The Company's sole responsibility is to its Client and this document does not exonerate parties to a transaction from exercising all their rights and obligations under the transaction documents. This document cannot be reproduced except in full, without prior written approval of the Company. Any unauthorized alteration, forgery or falsification of the content or appearance of this document is unlawful and offenders may be prosecuted to the fullest extent of the law. Unless otherwise stated the results shown in this test report refer only to the sample(s) tested.

Attention: To check the authenticity of testing /inspection report & certificate, please contact us at telephone: (86-755) 8307 1443, or email: CN.Doccheck@sgs.com

SGS-CSI Standards Technical Services Co., Ltd.
Shenzhen Branch / 检验检测专用章

Room 101-901, Plant 4 & Room 101, Plant 2 & Room 101, Plant 3 & Room 301-501, Plant 3, Jianghao (Bantian) Industrial Plant Area, No. 430, Jihua Road, Bantian Community, Bantian Street, Longgang District, Shenzhen, Guangdong, China 518129 www.sgs.com
中国·广东·深圳市龙岗区坂田街道坂田社区吉华路430号江豪(坂田)工业厂区厂房4号101-901、2号101、3号101、3号301-501 邮编:518129 t:(86-755) 25328888 sgs.china@sgs.com

Test Item(s)	A105	A106	A107	A108	A109	A110	A111	A112
DBP	---	---	---	---	---	---	---	---
DIBP	---	---	---	---	---	---	---	---
Conclusion	PASS	PASS	PASS	PASS	PASS	PASS	PASS	PASS

Test Item(s)	A113	A114	A115	A116	A117	A118	A119	A120
Pb	BL	BL	BL	BL	BL	BL	BL	BL
Hg	BL	BL	BL	BL	BL	BL	BL	BL
Cd	BL	BL	BL	BL	BL	BL	BL	BL
Cr(VI)▼	ND	BL	BL	BL	BL	BL	ND	BL
PBB	---	BL	BL	BL	BL	BL	---	BL
PBDE	---	BL	BL	BL	BL	BL	---	BL
DEHP	---	BL	BL	BL	BL	BL	---	BL
BBP	---	BL	BL	BL	BL	BL	---	BL
DBP	---	BL	BL	BL	BL	BL	---	BL
DIBP	---	BL	BL	BL	BL	BL	---	BL
Conclusion	PASS	PASS	PASS	PASS	PASS	PASS	PASS	PASS

Test Item(s)	A121	A122	A123	A124	A125	A126	A127	A128
Pb	BL	BL	BL	BL	BL	BL	BL	BL
Hg	BL	BL	BL	BL	BL	BL	BL	BL
Cd	BL	BL	BL	BL	BL	BL	BL	BL
Cr(VI)▼	BL	BL	BL	BL	BL	BL	BL	BL
PBB	BL	---	BL	BL	BL	BL	BL	BL
PBDE	BL	---	BL	BL	BL	BL	BL	BL
DEHP	BL	---	BL	BL	BL	BL	BL	BL
BBP	BL	---	BL	BL	BL	BL	BL	BL
DBP	BL	---	BL	BL	BL	BL	BL	BL
DIBP	BL	---	BL	BL	BL	BL	BL	BL
Conclusion	PASS	PASS	PASS	PASS	PASS	PASS	PASS	PASS

Test Item(s)	A129	A130	A131	A132	A133	A134	A135	A136
Pb	BL	BL	BL	BL	BL	BL	BL	BL
Hg	BL	BL	BL	BL	BL	BL	BL	BL
Cd	BL	BL	BL	BL	BL	BL	BL	BL
Cr(VI)▼	BL	BL	BL	BL	BL	BL	BL	BL
PBB	BL	BL	BL	BL	ND	ND	BL	ND
PBDE	BL	BL	BL	BL	ND	ND	BL	ND
DEHP	BL	BL	BL	BL	ND	ND	BL	ND
BBP	BL	BL	BL	BL	ND	ND	BL	ND
DBP	BL	BL	BL	BL	ND	ND	BL	ND
DIBP	BL	BL	BL	BL	ND	ND	BL	ND
Conclusion	PASS	PASS	PASS	PASS	PASS	PASS	PASS	PASS



Unless otherwise agreed in writing, this document is issued by the Company subject to its General Conditions of Service printed overleaf, available on request or accessible at <https://www.sgs.com/en/Terms-and-Conditions>. Attention is drawn to the limitation of liability, indemnification and jurisdiction issues defined therein. Any holder of this document is advised that information contained hereon reflects the Company's findings at the time of its intervention only and within the limits of Client's instructions, if any. The Company's sole responsibility is to its Client and this document does not exonerate parties to a transaction from exercising all their rights and obligations under the transaction documents. This document cannot be reproduced except in full, without prior written approval of the Company. Any unauthorized alteration, forgery or falsification of the content or appearance of this document is unlawful and offenders may be prosecuted to the fullest extent of the law. Unless otherwise stated the results shown in this test report refer only to the sample(s) tested.

Attention: To check the authenticity of testing / inspection report & certificate, please contact us at telephone: (86-755) 8307 1443, or email: CN.Doccheck@sgs.com

SGS-CS Standards Technical Services Co., Ltd.
Shenzhen Branch Inspection & Testing Services Laboratory

Room 101-901, Plant 4 & Room 101, Plant 2 & Room 301-501, Plant 3, Jianghao (Bantian) Industrial Plant Area, No. 430, Jihua Road, Bantian Community, Bantian Street, Longgang District, Shenzhen, Guangdong, China 518129 www.sgs.com
中国·广东·深圳市龙岗区坂田街道坂田社区吉华路430号江豪(坂田)工业厂区厂房4号101-901、2号101、3号301-501 邮编:518129 t:(86-755) 25328888 sgs.china@sgs.com

Test Item(s)	A137	A138	A139	A140	A141	A142	A143	A144
Pb	BL	BL	BL	BL	BL	BL	BL	BL
Hg	BL	BL	BL	BL	BL	BL	BL	BL
Cd	BL	BL	BL	BL	BL	BL	BL	BL
Cr(VI)▼	BL	BL	BL	BL	BL	BL	BL	BL
PBB	BL	BL	BL	BL	BL	BL	---	ND
PBDE	BL	BL	BL	BL	BL	BL	---	ND
DEHP	BL	BL	BL	BL	BL	BL	---	ND
BBP	BL	BL	BL	BL	BL	BL	---	ND
DBP	BL	BL	BL	BL	BL	BL	---	ND
DIBP	BL	BL	BL	BL	BL	BL	---	ND
Conclusion	PASS	PASS	PASS	PASS	PASS	PASS	PASS	PASS

Test Item(s)	A145	A146	A147	A148	A149	A150	A151	A152
Pb	BL	BL	BL	BL	OL▲	BL	OL▲	OL▲
Hg	BL	BL	BL	BL	BL	BL	BL	BL
Cd	BL	BL	BL	BL	BL	BL	BL	BL
Cr(VI)▼	BL	BL	BL	BL	BL	BL	BL	BL
PBB	BL	ND	BL	---	BL	BL	BL	BL
PBDE	BL	ND	BL	---	BL	BL	BL	BL
DEHP	BL	ND	BL	---	BL	BL	BL	BL
BBP	BL	ND	BL	---	BL	BL	BL	BL
DBP	BL	ND	BL	---	BL	BL	BL	BL
DIBP	BL	ND	BL	---	BL	BL	BL	BL
Conclusion	PASS	PASS	PASS	PASS	PASS	PASS	PASS	PASS

Test Item(s)	A153	A154	A155	A156	A157	A158	A159	A160
Pb	BL	BL	BL	BL	BL	BL	BL	BL
Hg	BL	BL	BL	BL	BL	BL	BL	BL
Cd	BL	BL	BL	BL	BL	BL	BL	BL
Cr(VI)▼	BL	BL	BL	BL	BL	BL	BL	BL
PBB	BL	ND	---	---	---	---	BL	---
PBDE	BL	ND	---	---	---	---	BL	---
DEHP	ND	ND	---	---	---	---	BL	---
BBP	ND	ND	---	---	---	---	BL	---
DBP	ND	ND	---	---	---	---	BL	---
DIBP	ND	ND	---	---	---	---	BL	---
Conclusion	PASS	PASS	PASS	PASS	PASS	PASS	PASS	PASS

Test Item(s)	A161	A162	A163	A164	A165	A166	A167	A168
Pb	BL	BL	BL	BL	BL	BL	BL	BL
Hg	BL	BL	BL	BL	BL	BL	BL	BL
Cd	BL	BL	BL	BL	BL	BL	BL	BL
Cr(VI)▼	BL	BL	BL	BL	BL	BL	BL	BL
PBB	BL	BL	BL	BL	BL	BL	BL	BL
PBDE	BL	BL	BL	BL	BL	BL	BL	BL



Unless otherwise agreed in writing, this document is issued by the Company subject to its General Conditions of Service printed overleaf, available on request or accessible at <https://www.sgs.com/en/Terms-and-Conditions>. Attention is drawn to the limitation of liability, indemnification and jurisdiction issues defined therein. Any holder of this document is advised that information contained hereon reflects the Company's findings at the time of its intervention only and within the limits of Client's instructions, if any. The Company's sole responsibility is to its Client and this document does not exonerate parties to a transaction from exercising all their rights and obligations under the transaction documents. This document cannot be reproduced except in full, without prior written approval of the Company. Any unauthorized alteration, forgery or falsification of the content or appearance of this document is unlawful and offenders may be prosecuted to the fullest extent of the law. Unless otherwise stated the results shown in this test report refer only to the sample(s) tested.

Attention: To check the authenticity of testing /inspection report & certificate, please contact us at telephone: (86-755) 8307 1443, or email: CN.Doccheck@sgs.com

Room 101-901, Plant 4 & Room 101, Plant 2 & Room 101, Plant 3 & Room 301-501, Plant 3, Jiangnan (Bantian) Industrial Plant Area, No. 430, Jihua Road, Bantian Community, Bantian Street, Longgang District, Shenzhen, Guangdong, China 518129 www.sgs.com
 中国·广东·深圳市龙岗区坂田街道坂田社区吉华路430号江楠(坂田)工业厂区厂房4号101-901、2号101、3号301-501 邮编:518129 t:(86-755)25328888 sgs.china@sgs.com

Test Item(s)	A161	A162	A163	A164	A165	A166	A167	A168
DEHP	BL	BL	BL	ND	ND	BL	BL	BL
BBP	BL	BL	BL	ND	ND	BL	BL	BL
DBP	BL	BL	BL	ND	ND	BL	BL	BL
DIBP	BL	BL	BL	ND	ND	BL	BL	BL
Conclusion	PASS	PASS	PASS	PASS	PASS	PASS	PASS	PASS

Test Item(s)	A169	A170	A171	A172	A173	A174	A175	A176
Pb	BL	BL	BL	OL▲	BL	BL	BL	OL▲
Hg	BL	BL	BL	BL	BL	BL	BL	BL
Cd	BL	BL	BL	BL	BL	BL	BL	BL
Cr(VI)▼	BL	BL	BL	BL	BL	BL	BL	BL
PBB	BL	ND	BL	BL	ND	---	BL	BL
PBDE	BL	ND	BL	BL	ND	---	BL	BL
DEHP	BL	ND	BL	BL	ND	---	BL	BL
BBP	BL	ND	BL	BL	ND	---	BL	BL
DBP	BL	ND	BL	BL	ND	---	BL	BL
DIBP	BL	ND	BL	BL	ND	---	BL	BL
Conclusion	PASS	PASS	PASS	PASS	PASS	PASS	PASS	PASS

Test Item(s)	A177	A178	A179	A180	A181	A182	A183	A184
Pb	BL	19866▲	OL▲	41604▲	BL	OL▲	BL	OL▲
Hg	BL	BL	BL	BL	BL	BL	BL	BL
Cd	BL	ND	BL	ND	BL	BL	BL	BL
Cr(VI)▼	BL	BL	BL	BL	BL	BL	BL	BL
PBB	BL	BL	BL	BL	BL	BL	BL	BL
PBDE	BL	BL	BL	BL	BL	BL	BL	BL
DEHP	BL	BL	BL	BL	BL	BL	BL	BL
BBP	BL	BL	BL	BL	BL	BL	BL	BL
DBP	BL	BL	BL	BL	BL	BL	BL	BL
DIBP	BL	BL	BL	BL	BL	BL	BL	BL
Conclusion	PASS	PASS	PASS	PASS	PASS	PASS	PASS	PASS

Test Item(s)	A185	A186	A187	A188	A189	A190	A191	A192
Pb	OL▲	BL	BL	BL	BL	BL	BL	BL
Hg	BL	BL	BL	BL	BL	BL	BL	BL
Cd	BL	BL	BL	BL	BL	BL	BL	BL
Cr(VI)▼	BL	BL	ND	BL	BL	BL	ND	ND
PBB	BL	BL	---	BL	BL	BL	---	---
PBDE	BL	BL	---	BL	BL	BL	---	---
DEHP	BL	BL	---	ND	ND	ND	---	---
BBP	BL	BL	---	ND	ND	ND	---	---
DBP	BL	BL	---	ND	ND	ND	---	---
DIBP	BL	BL	---	ND	ND	ND	---	---
Conclusion	PASS	PASS	PASS	PASS	PASS	PASS	PASS	PASS



Unless otherwise agreed in writing, this document is issued by the Company subject to its General Conditions of Service printed overleaf, available on request or accessible at <https://www.sgs.com/en/Terms-and-Conditions>. Attention is drawn to the limitation of liability, indemnification and jurisdiction issues defined therein. Any holder of this document is advised that information contained hereon reflects the Company's findings at the time of its intervention only and within the limits of Client's instructions, if any. The Company's sole responsibility is to its Client and this document does not exonerate parties to a transaction from exercising all their rights and obligations under the transaction documents. This document cannot be reproduced except in full, without prior written approval of the Company. Any unauthorized alteration, forgery or falsification of the content or appearance of this document is unlawful and offenders may be prosecuted to the fullest extent of the law. Unless otherwise stated the results shown in this test report refer only to the sample(s) tested.

Attention: To check the authenticity of testing /inspection report & certificate, please contact us at telephone: (86-755) 8307 1443, or email: CN.Doccheck@sgs.com

SGS-CHINA Standards Technical Services Co., Ltd.
Shenzhen Branch Inspection & Testing Services Laboratory

Room 101-901, Plant 4 & Room 101, Plant 2 & Room 101, Plant 3 & Room 301-501, Plant 3, Jianghao (Bantian) Industrial Plant Area, No. 430, Jihua Road, Bantian Community, Bantian Street, Longgang District, Shenzhen, Guangdong, China 518129 www.sgs.com
中国·广东·深圳市龙岗区坂田街道坂田社区吉华路430号江豪(坂田)工业厂区厂房4号101-901、2号101、3号301-501 邮编:518129 t:(86-755) 25328888 sgs.china@sgs.com

Test Item(s)	A193	A194	A195.1	A196	A197	A198	A199.1	A200
Pb	BL	BL	<40000▲	BL	BL	BL	BL	BL
Hg	BL	BL	BL	BL	BL	BL	BL	BL
Cd	BL	BL	BL	BL	BL	BL	BL	BL
Cr(VI)▼	BL	BL	BL	BL	BL	BL	BL	ND
PBB	BL	BL	---	BL	---	BL	BL	---
PBDE	BL	BL	---	BL	---	BL	BL	---
DEHP	ND	BL	---	BL	---	ND	ND	---
BBP	ND	BL	---	BL	---	ND	ND	---
DBP	ND	BL	---	BL	---	ND	ND	---
DIBP	ND	BL	---	BL	---	ND	ND	---
Conclusion	PASS	PASS	PASS	PASS	PASS	PASS	PASS	PASS

Test Item(s)	A201	A202	A203	A204	A205	A206.1	A207	A208
Pb	BL	BL	BL	BL	BL	BL	BL	BL
Hg	BL	BL	BL	BL	BL	BL	BL	BL
Cd	BL	BL	BL	BL	BL	BL	BL	BL
Cr(VI)▼	BL	BL	ND	BL	BL	ND	BL	BL
PBB	BL	BL	---	---	BL	---	ND	ND
PBDE	BL	BL	---	---	BL	---	ND	ND
DEHP	BL	BL	---	---	BL	---	ND	ND
BBP	BL	BL	---	---	BL	---	ND	ND
DBP	BL	BL	---	---	BL	---	ND	ND
DIBP	BL	BL	---	---	BL	---	ND	ND
Conclusion	PASS	PASS	PASS	PASS	PASS	PASS	PASS	PASS

Test Item(s)	A209	A210	A211	A212	A213	A214	A215	A216
Pb	BL	BL	BL	BL	BL	BL	BL	BL
Hg	BL	BL	BL	BL	BL	BL	BL	BL
Cd	BL	BL	BL	BL	BL	BL	BL	BL
Cr(VI)▼	BL	BL	BL	BL	BL	BL	BL	BL
PBB	ND	---	---	ND	BL	ND	---	BL
PBDE	ND	---	---	ND	BL	ND	---	BL
DEHP	ND	---	---	ND	BL	ND	---	BL
BBP	ND	---	---	ND	BL	ND	---	BL
DBP	ND	---	---	ND	BL	ND	---	BL
DIBP	ND	---	---	ND	BL	ND	---	BL
Conclusion	PASS	PASS	PASS	PASS	PASS	PASS	PASS	PASS

Test Item(s)	A217	A218	A219	A220	A221	A222	A223	A224
Pb	BL	BL	52	BL	BL	BL	BL	BL
Hg	BL	BL	BL	BL	BL	BL	BL	BL
Cd	BL	BL	BL	BL	BL	BL	BL	BL
Cr(VI)▼	BL	BL	BL	BL	BL	BL	ND	BL
PBB	BL	BL	---	BL	BL	BL	---	BL



SGS-CSI Standards Technical Services Co., Ltd.
Shenzhen Branch Inspection & Testing Services Laboratory

Unless otherwise agreed in writing, this document is issued by the Company subject to its General Conditions of Service printed overleaf, available on request or accessible at <https://www.sgs.com/en/Terms-and-Conditions>. Attention is drawn to the limitation of liability, indemnification and jurisdiction issues defined therein. Any holder of this document is advised that information contained hereon reflects the Company's findings at the time of its intervention only and within the limits of Client's instructions, if any. The Company's sole responsibility is to its Client and this document does not exonerate parties to a transaction from exercising all their rights and obligations under the transaction documents. This document cannot be reproduced except in full, without prior written approval of the Company. Any unauthorized alteration, forgery or falsification of the content or appearance of this document is unlawful and offenders may be prosecuted to the fullest extent of the law. Unless otherwise stated the results shown in this test report refer only to the sample(s) tested.

Attention: To check the authenticity of testing /inspection report & certificate, please contact us at telephone: (86-755) 8307 1443, or email: CN.Doccheck@sgs.com

Room 101-901, Plant 4 & Room 101, Plant 2 & Room 101, Plant 3 & Room 301-501, Plant 3, Jianghao (Bantian) Industrial Plant Area, No. 430, Jihua Road, Bantian Community, Bantian Street, Longgang District, Shenzhen, Guangdong, China 518129 www.sgs.com.cn
中国·广东·深圳市龙岗区坂田街道坂田社区吉华路430号江豪(坂田)工业厂区厂房4号101-901、2号101、3号101、3号301-501 邮编:518129 t:(86-755) 25328888 sgs.china@sgs.com

Test Item(s)	A217	A218	A219	A220	A221	A222	A223	A224
PBDE	BL	BL	---	BL	BL	BL	---	BL
DEHP	BL	BL	---	BL	BL	BL	---	BL
BBP	BL	BL	---	BL	BL	BL	---	BL
DBP	BL	BL	---	BL	BL	BL	---	BL
DIBP	BL	BL	---	BL	BL	BL	---	BL
Conclusion	PASS	PASS	PASS	PASS	PASS	PASS	PASS	PASS

Test Item(s)	A225	A226	A227	A228	A229	A230	A231	A232
Pb	BL	BL	BL	BL	BL	BL	BL	BL
Hg	BL	BL	BL	BL	BL	BL	BL	BL
Cd	BL	BL	BL	BL	BL	BL	BL	BL
Cr(VI)▼	BL	BL	BL	BL	BL	BL	BL	BL
PBB	BL	BL	BL	BL	BL	ND	---	BL
PBDE	BL	BL	BL	BL	BL	ND	---	BL
DEHP	BL	BL	BL	BL	BL	ND	---	BL
BBP	BL	BL	BL	BL	BL	ND	---	BL
DBP	BL	BL	BL	BL	BL	ND	---	BL
DIBP	BL	BL	BL	BL	BL	ND	---	BL
Conclusion	PASS	PASS	PASS	PASS	PASS	PASS	PASS	PASS

Test Item(s)	A233	A234	A235	A236	A237	A238	A239	A240.1
Pb	BL	BL	BL	BL	BL	BL	BL	<40000▲
Hg	BL	BL	BL	BL	BL	BL	BL	BL
Cd	BL	BL	BL	BL	BL	BL	BL	BL
Cr(VI)▼	BL	BL	ND	BL	ND	BL	BL	BL
PBB	---	BL	---	BL	---	BL	BL	---
PBDE	---	BL	---	BL	---	BL	BL	---
DEHP	---	BL	---	BL	---	BL	BL	---
BBP	---	BL	---	BL	---	BL	BL	---
DBP	---	BL	---	BL	---	BL	BL	---
DIBP	---	BL	---	BL	---	BL	BL	---
Conclusion	PASS	PASS	PASS	PASS	PASS	PASS	PASS	PASS

Test Item(s)	A241	A242	A243	A244.1	A245	A246	A247	A248
Pb	BL	BL	BL	BL	BL	BL	BL	<40000▲
Hg	BL	BL	BL	BL	BL	BL	BL	BL
Cd	BL	BL	BL	BL	BL	BL	BL	BL
Cr(VI)▼	BL	BL	BL	BL	BL	BL	BL	BL
PBB	BL	---	ND	---	BL	---	ND	---
PBDE	BL	---	ND	---	BL	---	ND	---
DEHP	BL	---	ND	---	BL	---	ND	---
BBP	BL	---	ND	---	BL	---	ND	---
DBP	BL	---	ND	---	BL	---	ND	---
DIBP	BL	---	ND	---	BL	---	ND	---
Conclusion	PASS	PASS	PASS	PASS	PASS	PASS	PASS	PASS



SGS-CSI Standards Technical Services Co., Ltd.
Shenzhen Branch Inspection & Testing Services Laboratory

Unless otherwise agreed in writing, this document is issued by the Company subject to its General Conditions of Service printed overleaf, available on request or accessible at <https://www.sgs.com/en/Terms-and-Conditions>. Attention is drawn to the limitation of liability, indemnification and jurisdiction issues defined therein. Any holder of this document is advised that information contained hereon reflects the Company's findings at the time of its intervention only and within the limits of Client's instructions, if any. The Company's sole responsibility is to its Client and this document does not exonerate parties to a transaction from exercising all their rights and obligations under the transaction documents. This document cannot be reproduced except in full, without prior written approval of the Company. Any unauthorized alteration, forgery or falsification of the content or appearance of this document is unlawful and offenders may be prosecuted to the fullest extent of the law. Unless otherwise stated the results shown in this test report refer only to the sample(s) tested.

Attention: To check the authenticity of testing /inspection report & certificate, please contact us at telephone: (86-755) 8307 1443, or email: CN.Doccheck@sgs.com

Room 101-901, Plant 4 & Room 101, Plant 2 & Room 101, Plant 3 & Room 301-501, Plant 3, Jiangnan (Bantian) Industrial Plant Area, No. 430, Jihua Road, Bantian Community, Bantian Street, Longgang District, Shenzhen, Guangdong, China 518129 www.sgs.com
中国·广东·深圳市龙岗区坂田街道坂田社区吉华路430号江楠(坂田)工业厂区厂房4号101-901、2号101、3号101、3号301-501 邮编:518129 t:(86-755) 25328888 sgs.china@sgs.com

Test Item(s)	A249	A250	A251	A252.1	A253	A254.1	A255	A256
Pb	BL	BL	BL	BL	BL	BL	BL	1200▲
Hg	BL	BL	BL	BL	BL	BL	BL	BL
Cd	BL	BL	BL	BL	BL	BL	BL	BL
Cr(VI)▼	BL	BL	BL	BL	ND	BL	BL	BL
PBB	---	BL	BL	BL	---	BL	ND	BL
PBDE	---	BL	BL	BL	---	BL	ND	BL
DEHP	---	BL	BL	ND	---	ND	ND	BL
BBP	---	BL	BL	ND	---	ND	ND	BL
DBP	---	BL	BL	ND	---	ND	ND	BL
DIBP	---	BL	BL	ND	---	ND	ND	BL
Conclusion	PASS	PASS	PASS	PASS	PASS	PASS	PASS	PASS

Test Item(s)	A257	A258	A259	A260	A261	A262.1	A263	A264
Pb	167	BL	BL	1167▲	BL	BL	BL	BL
Hg	BL	BL	BL	BL	BL	BL	BL	BL
Cd	BL	BL	BL	BL	BL	BL	BL	BL
Cr(VI)▼	BL	BL	BL	BL	BL	BL	ND	ND
PBB	BL	---	BL	BL	BL	---	---	---
PBDE	BL	---	BL	BL	BL	---	---	---
DEHP	BL	---	BL	BL	BL	---	---	---
BBP	BL	---	BL	BL	BL	---	---	---
DBP	BL	---	BL	BL	BL	---	---	---
DIBP	BL	---	BL	BL	BL	---	---	---
Conclusion	PASS	PASS	PASS	PASS	PASS	PASS	PASS	PASS

Test Item(s)	A265	A266	A267
Pb	BL	BL	BL
Hg	BL	BL	BL
Cd	BL	BL	BL
Cr(VI)▼	BL	ND	BL
PBB	BL	---	BL
PBDE	BL	---	BL
DEHP	BL	---	BL
BBP	BL	---	BL
DBP	BL	---	BL
DIBP	BL	---	BL
Conclusion	PASS	PASS	PASS



Unless otherwise agreed in writing, this document is issued by the Company subject to its General Conditions of Service printed overleaf, available on request or accessible at <https://www.sgs.com/en/Terms-and-Conditions>. Attention is drawn to the limitation of liability, indemnification and jurisdiction issues defined therein. Any holder of this document is advised that information contained hereon reflects the Company's findings at the time of its intervention only and within the limits of Client's instructions, if any. The Company's sole responsibility is to its Client and this document does not exonerate parties to a transaction from exercising all their rights and obligations under the transaction documents. This document cannot be reproduced except in full, without prior written approval of the Company. Any unauthorized alteration, forgery or falsification of the content or appearance of this document is unlawful and offenders may be prosecuted to the fullest extent of the law. Unless otherwise stated the results shown in this test report refer only to the sample(s) tested.

Attention: To check the authenticity of testing /inspection report & certificate, please contact us at telephone: (86-755) 8307 1443, or email: CN.Doccheck@sgs.com

Room 101-901, Plant 4 & Room 101, Plant 2 & Room 101, Plant 3 & Room 301-501, Plant 3, Jianghao (Bantian) Industrial Plant Area, No. 430, Jihua Road, Bantian Community, Bantian Street, Longgang District, Shenzhen, Guangdong, China 518129 www.sgs.com
中国·广东·深圳市龙岗区坂田街道坂田社区吉华路430号江豪(坂田)工业厂区厂房4号101-901、2号101、3号301-501 邮编:518129 t:(86-755) 25328888 sgs.china@sgs.com

Notes:

(1) Interpretation of screening results by X-ray fluorescence spectrometry (XRF):

(a) Screening limits in mg/kg for regulated elements in various matrices according to IEC 62321-3-1:2013 Annex A as below table.

Element	Polymers	Metals	Composite Materials
Cd	$BL \leq (70-3\sigma) < X < (130+3\sigma) \leq OL$	$BL \leq (70-3\sigma) < X < (130+3\sigma) \leq OL$	$LOD < X < (150+3\sigma) \leq OL$
Pb	$BL \leq (700-3\sigma) < X < (1300+3\sigma) \leq OL$	$BL \leq (700-3\sigma) < X < (1300+3\sigma) \leq OL$	$BL \leq (500-3\sigma) < X < (1500+3\sigma) \leq OL$
Hg	$BL \leq (700-3\sigma) < X < (1300+3\sigma) \leq OL$	$BL \leq (700-3\sigma) < X < (1300+3\sigma) \leq OL$	$BL \leq (500-3\sigma) < X < (1500+3\sigma) \leq OL$
Br	$BL \leq (300-3\sigma) < X$	Not applicable	$BL \leq (250-3\sigma) < X$
Cr	$BL \leq (700-3\sigma) < X$	$BL \leq (700-3\sigma) < X$	$BL \leq (500-3\sigma) < X$

(b) If the maximum allowed level restricts PBB/PBDE and Cr(VI) rather than Br and Cr, the exceptions are the XRF determinations of Br and Cr. If the quantitative results for the elements Br and/or Cr are higher than the limit (for Br calculated based on the stoichiometry of Br in the most common congeners of PBB/PBDE), the sample is "inconclusive".

(c) Results are obtained by EDXRF for primary screening, LOD = Limit of Detection, BL = Below Limit, OL = Over Limit, IN (The symbol X marks the region) = Inconclusive, where further investigation is necessary, and further chemical testing by ICP-OES (for Cd, Pb, Hg), UV-Vis (for Cr(VI)) and GC-MS (for PBB/PBDE) are recommended to be performed.

(d) The EDXRF screening test for elements – The reading may be different to the actual content in the sample be of non-uniformity composition.

(2) Screening results of Phthalates (PHTH) below the limits are shown as "BL". Further chemical testing by GC-MS is to be performed if the results exceed limits.

Test Items	CAS No.
Bis(2-ethylhexyl) phthalate (DEHP)	117-81-7
Butyl benzyl phthalate (BBP)	85-68-7
Dibutyl phthalate (DBP)	84-74-2
Diisobutyl phthalate (DIBP)	84-69-5

(3) Interpretation of results by chemical tests:

(a) mg/kg = 0.0001%, MDL = Method detection Limit, ND = Not Detected (<MDL), --- = Not Applicable.

(b) Unit and MDL in wet chemical test

Test Items	Pb	Hg	Cd	DEHP	BBP	DBP	DIBP
Unit	mg/kg	mg/kg	mg/kg	mg/kg	mg/kg	mg/kg	mg/kg
MDL	10	10	10	100	100	100	100

The MDL for single compound of PBB and PBDE is 100 mg/kg,

MDL of Cr(VI) for polymer, composite and leather sample is 10 mg/kg.

MDL of Cr(VI) for metal sample is 0.10 µg/cm².

(c) ▼ = Metal sample

a. The sample is positive for Cr(VI) if the Cr(VI) concentration is greater than 0.13 µg/cm². The sample coating is considered to contain Cr(VI).

b. The sample is negative for Cr(VI) if Cr(VI) is ND (concentration less than 0.10 µg/cm²). The coating is considered a non-Cr(VI) based coating

c. The result between 0.10 µg/cm² and 0.13 µg/cm² is considered to be inconclusive-unavoidable coating variations may influence the determination

Information on storage conditions and production date of the tested sample is unavailable and thus Cr(VI) results represent status of the sample at the time of testing.



Unless otherwise agreed in writing, this document is issued by the Company subject to its General Conditions of Service printed overleaf, available on request or accessible at <https://www.sgs.com/en/Terms-and-Conditions>. Attention is drawn to the limitation of liability, indemnification and jurisdiction issues defined therein. Any holder of this document is advised that information contained hereon reflects the Company's findings at the time of its intervention only and within the limits of Client's instructions, if any. The Company's sole responsibility is to its Client and this document does not exonerate parties to a transaction from exercising all their rights and obligations under the transaction documents. This document cannot be reproduced except in full, without prior written approval of the Company. Any unauthorized alteration, forgery or falsification of the content or appearance of this document is unlawful and offenders may be prosecuted to the fullest extent of the law. Unless otherwise stated the results shown in this test report refer only to the sample(s) tested.

Attention: To check the authenticity of testing / inspection report & certificate, please contact us at telephone: (86-755) 8307 1443, or email: CN.Doccheck@sgs.com

SGS-CSI Standards Technical Services Co., Ltd.
Shenzhen Branch

Room 101-901, Plant 4 & Room 101, Plant 2 & Room 101, Plant 3 & Room 301-501, Plant 3, Jiangnan (Bantian) Industrial Plant Area, No. 430, Jihua Road, Bantian Community, Bantian Street, Longgang District, Shenzhen, Guangdong, China 518129 www.sgs.com
中国·广东·深圳市龙岗区坂田街道坂田社区吉华路430号江澜(坂田)工业厂区厂房4号101-901、2号101、3号101、3号301-501 邮编:518129 t:(86-755) 25328888 sgs.china@sgs.com

(4) Restricted substances and maximum concentration values tolerated by weight in homogeneous materials under RoHS Directive: Cd: 0.01%, Pb/Hg/Cr(VI)/PBB/PBDE/DEHP/BBP/DBP/DIBP: 0.1%. The limit is quoted from RoHS Directive (EU) 2015/863.

(5) IEC 62321 series is equivalent to EN 62321 series.

(6) ▲=According to the declaration from the client, Lead (Pb) in No.A81, No.A195.1, No.A240.1, No.A248 are exempted by EU RoHS directive 2011/65/EU based on [ANNEX III 6(a)-I]: Lead as an alloying element in steel for machining purposes and in galvanised steel containing up to 0.35 % lead by weight and in batch hot dip galvanised steel components containing up to 0.2 % lead by weight.

Lead (Pb) in No.A149, No.A151, No.A152, No.A172, No.A176, No.A178~No.A180, No.A182, No.A184, No.A185, No.A256, No.A260 are exempted by EU RoHS directive 2011/65/EU based on [ANNEX III 7(a)]: Lead in high melting temperature type solders (i.e. lead-based alloys containing 85 % by weight or more lead).

More information about exemption can be found via the following link:

<https://rohs.sgsonline.com.cn/PDFLinks/en/RSTS-TP-037%20RoHS%20Exemption%20%28EN%29.pdf>

Remark: Results & photo(s) of this report refer to test report SZXEC25003900901.

Unless otherwise stated, the decision rule for conformity reporting is based on Binary Statement for Simple Acceptance Rule ($w=0$) stated in ILAC-G8:09/2019.



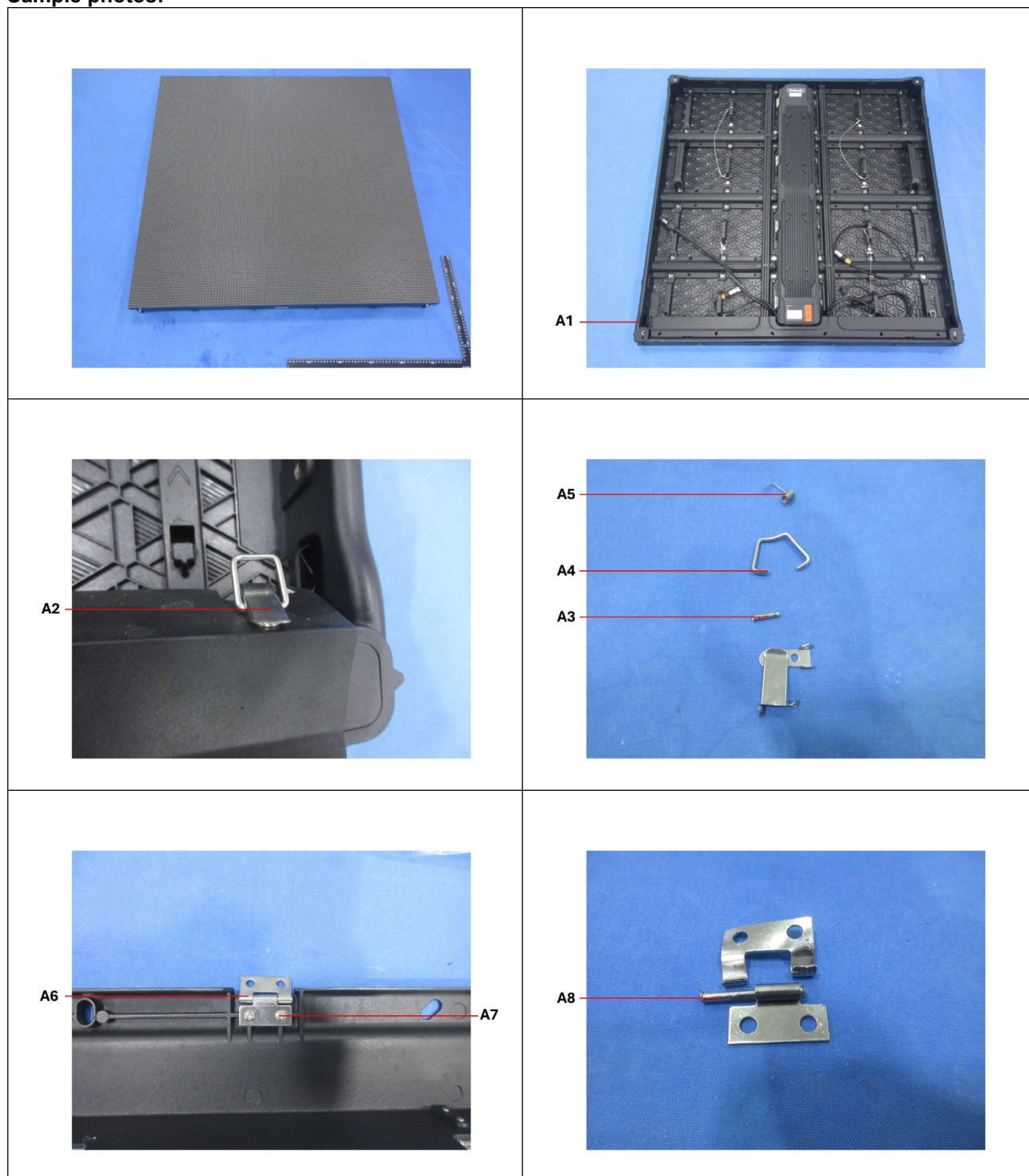
Unless otherwise agreed in writing, this document is issued by the Company subject to its General Conditions of Service printed overleaf, available on request or accessible at <https://www.sgs.com/en/Terms-and-Conditions>. Attention is drawn to the limitation of liability, indemnification and jurisdiction issues defined therein. Any holder of this document is advised that information contained hereon reflects the Company's findings at the time of its intervention only and within the limits of Client's instructions, if any. The Company's sole responsibility is to its Client and this document does not exonerate parties to a transaction from exercising all their rights and obligations under the transaction documents. This document cannot be reproduced except in full, without prior written approval of the Company. Any unauthorized alteration, forgery or falsification of the content or appearance of this document is unlawful and offenders may be prosecuted to the fullest extent of the law. Unless otherwise stated the results shown in this test report refer only to the sample(s) tested.

Attention: To check the authenticity of testing /inspection report & certificate, please contact us at telephone: (86-755) 8307 1443, or email: CN.Doccheck@sgs.com

SGS-CS Standards Technical Services Co., Ltd.
Shenzhen Branch

Room 101-901, Plant 4 & Room 101, Plant 2 & Room 101, Plant 3 & Room 301-501, Plant 3, Jianghao (Bantian) Industrial Plant Area, No. 430, Jihua Road, Bantian Community, Bantian Street, Longgang District, Shenzhen, Guangdong, China 518129 www.sgs.com.cn
中国·广东·深圳市龙岗区坂田街道坂田社区吉华路430号江豪(坂田)工业厂区厂房4号101-901、2号101、3号301-501 邮编:518129 t:(86-755) 25328888 sgs.china@sgs.com

Sample photos:

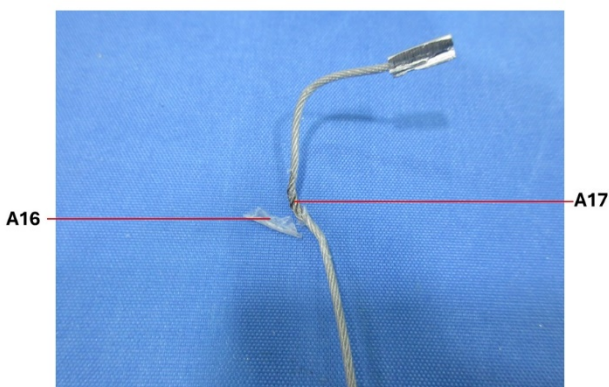
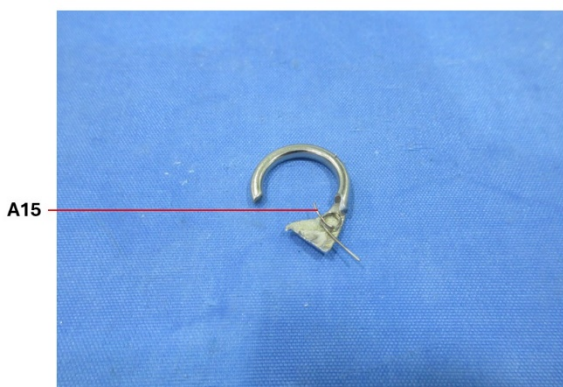
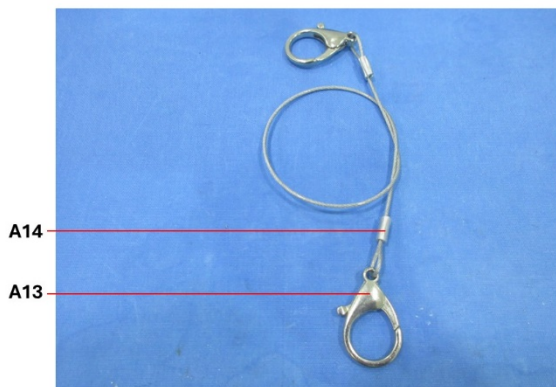
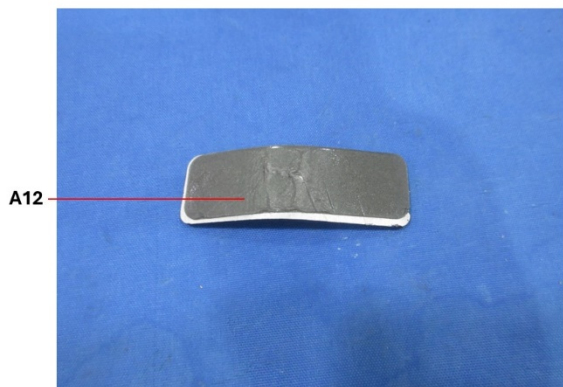


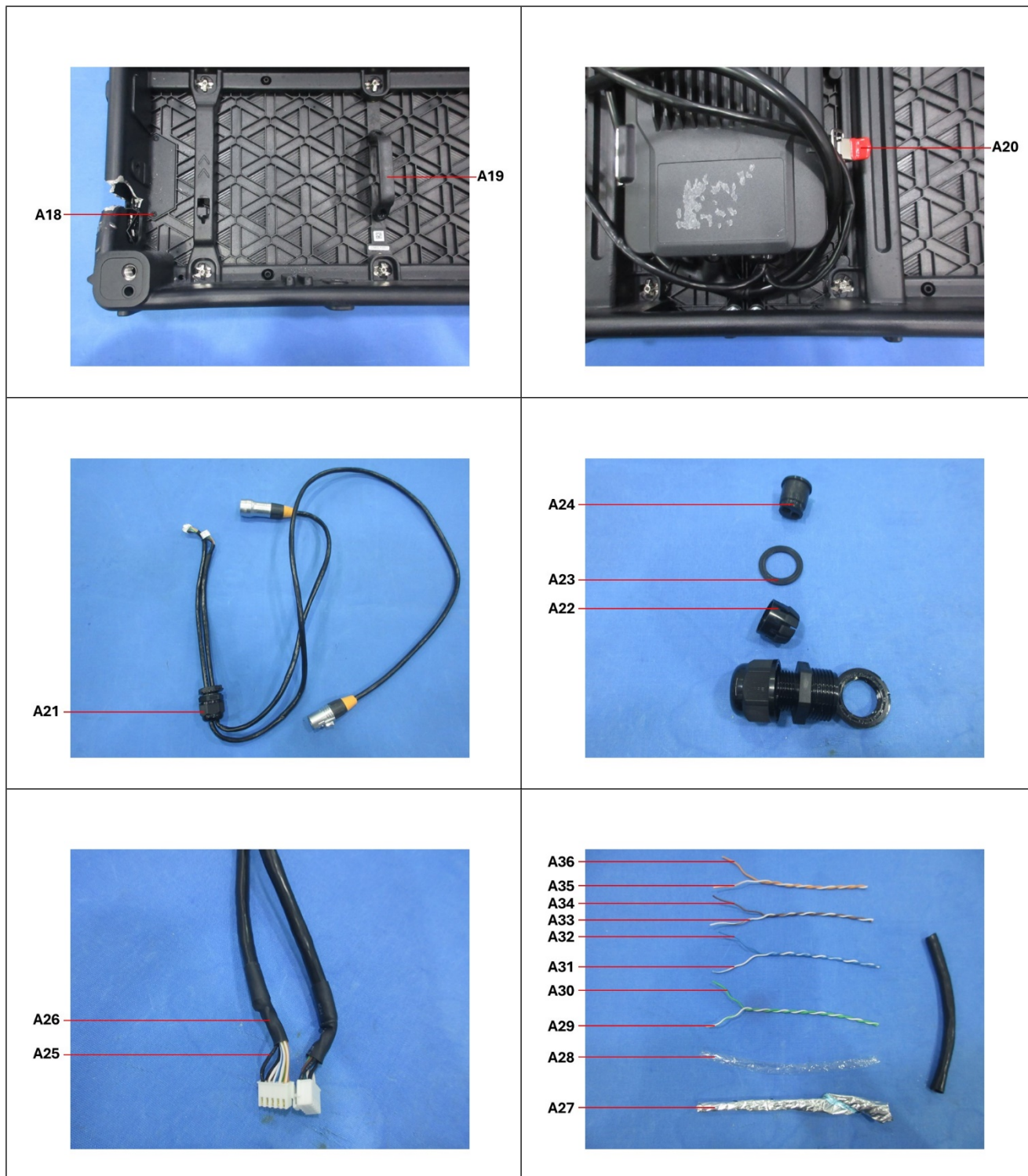
SGS-CHINA Standards Technical Services Co., Ltd.
Shenzhen Branch

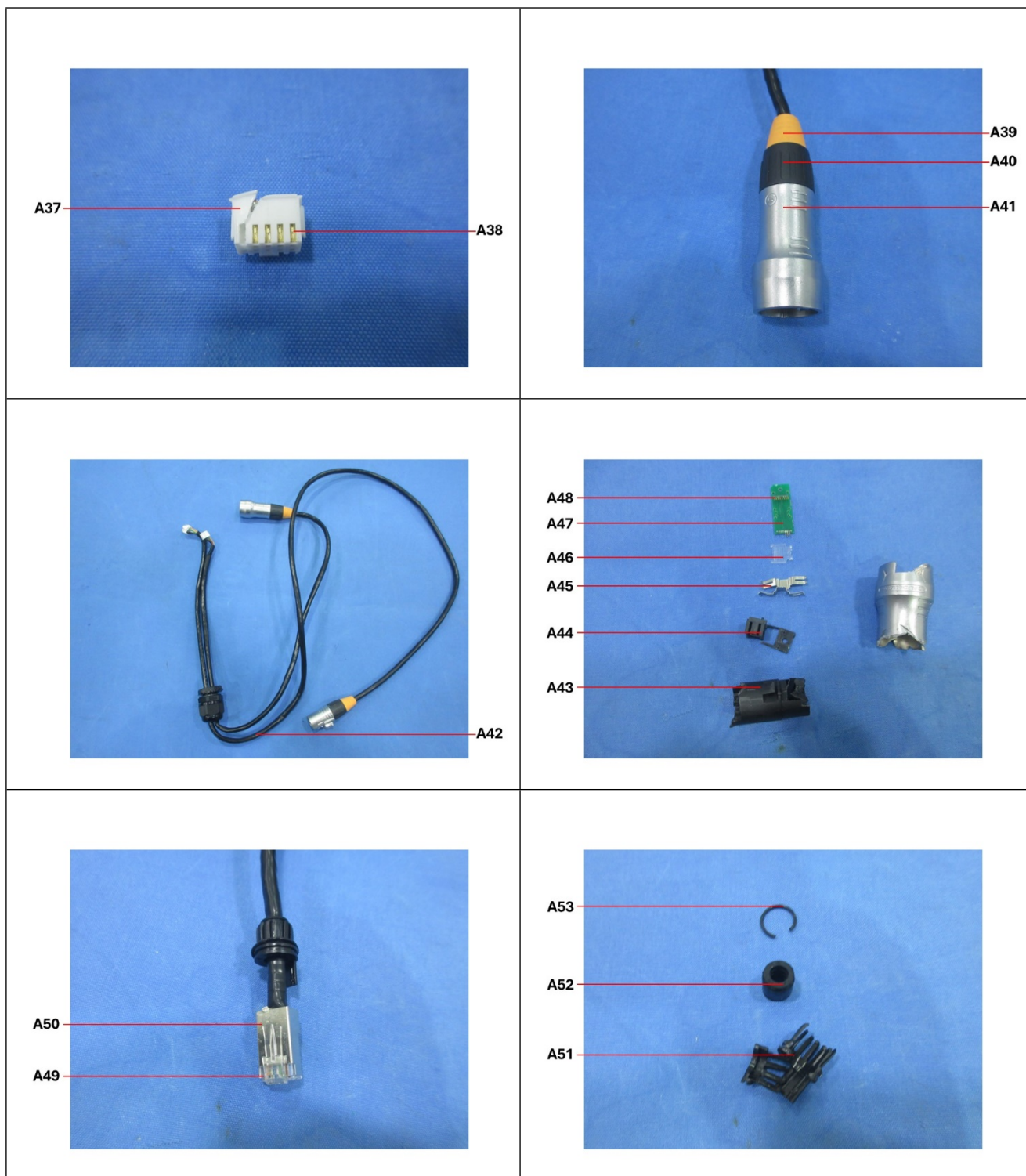
Unless otherwise agreed in writing, this document is issued by the Company subject to its General Conditions of Service printed overleaf, available on request or accessible at <https://www.sgs.com/en/Terms-and-Conditions>. Attention is drawn to the limitation of liability, indemnification and jurisdiction issues defined therein. Any holder of this document is advised that information contained hereon reflects the Company's findings at the time of its intervention only and within the limits of Client's instructions, if any. The Company's sole responsibility is to its Client and this document does not exonerate parties to a transaction from exercising all their rights and obligations under the transaction documents. This document cannot be reproduced except in full, without prior written approval of the Company. Any unauthorized alteration, forgery or falsification of the content or appearance of this document is unlawful and offenders may be prosecuted to the fullest extent of the law. Unless otherwise stated the results shown in this test report refer only to the sample(s) tested.

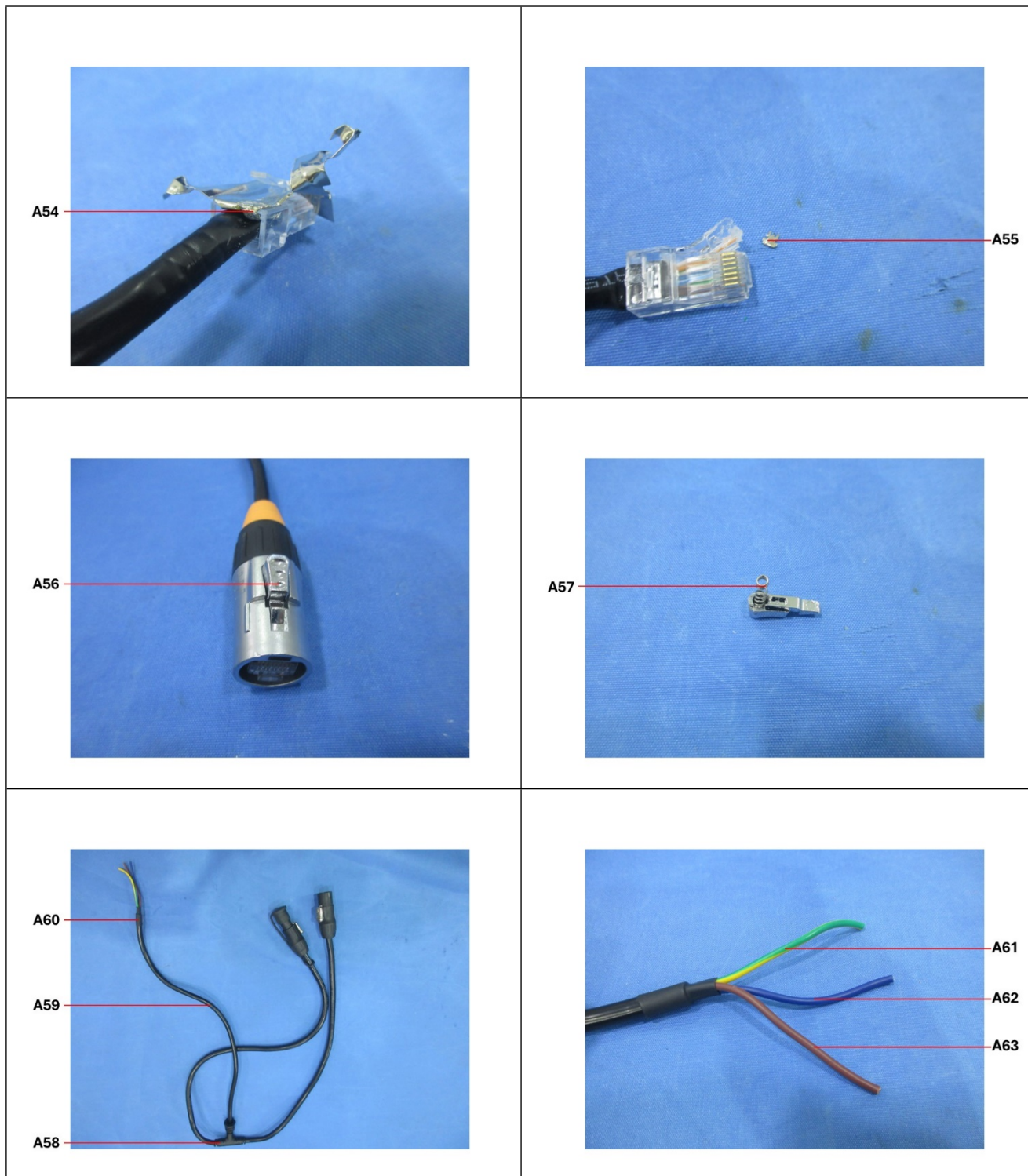
Attention: To check the authenticity of testing /inspection report & certificate, please contact us at telephone: (86-755) 8307 1443, or email: CN.Doccheck@sgs.com

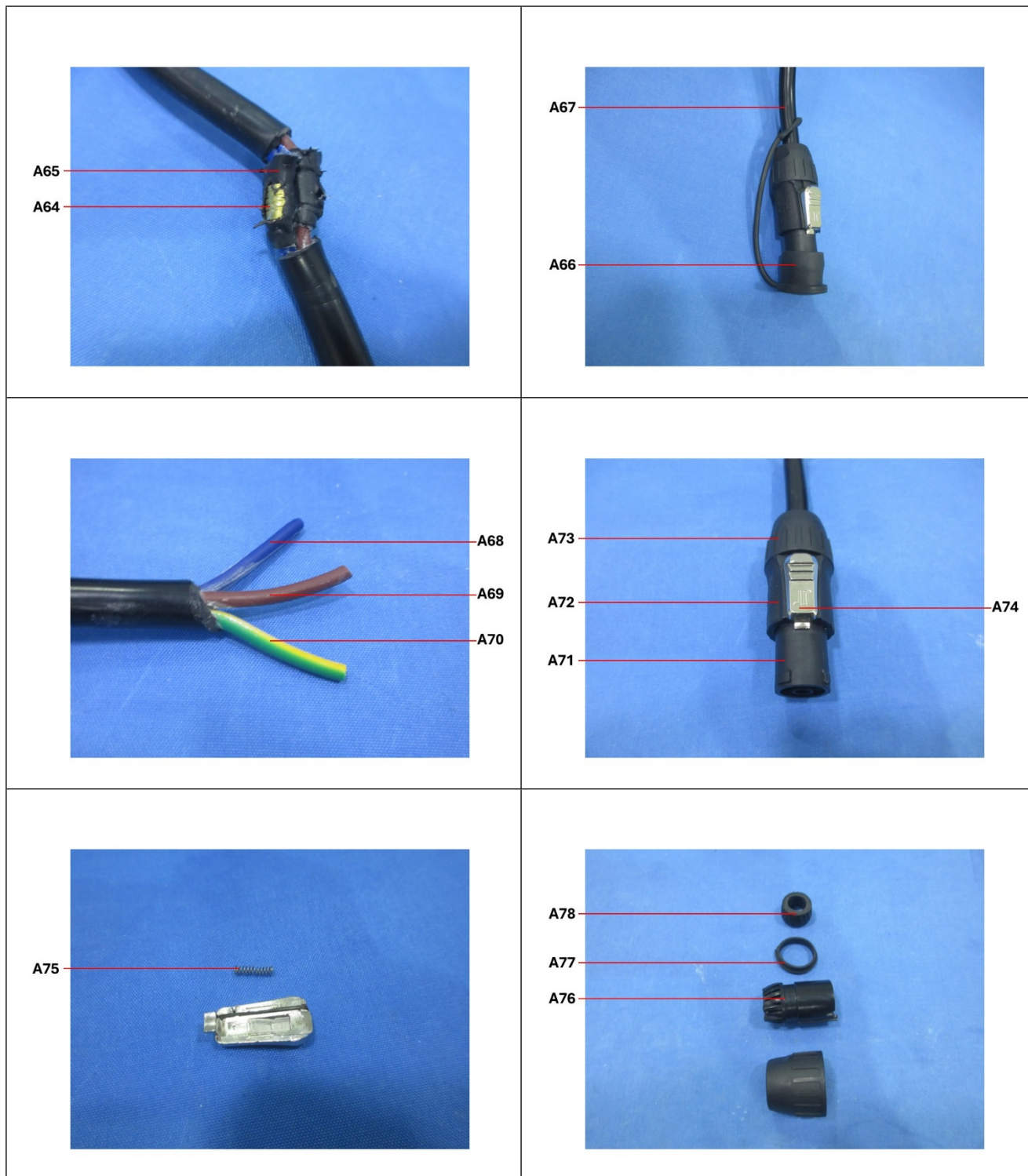
Room 101-901, Plant 4 & Room 101, Plant 2 & Room 101, Plant 3 & Room 301-501, Plant 3, Jianghao (Bantian) Industrial Plant Area, No. 430, Jihua Road, Bantian Community, Bantian Street, Longgang District, Shenzhen, Guangdong, China 518129 www.sgsgroup.com.cn
中国·广东·深圳市龙岗区坂田街道坂田社区吉华路430号江豪(坂田)工业厂区厂房4号101-901、2号101、3号301-501 邮编:518129 t:(86-755) 25328888 sgs.china@sgs.com

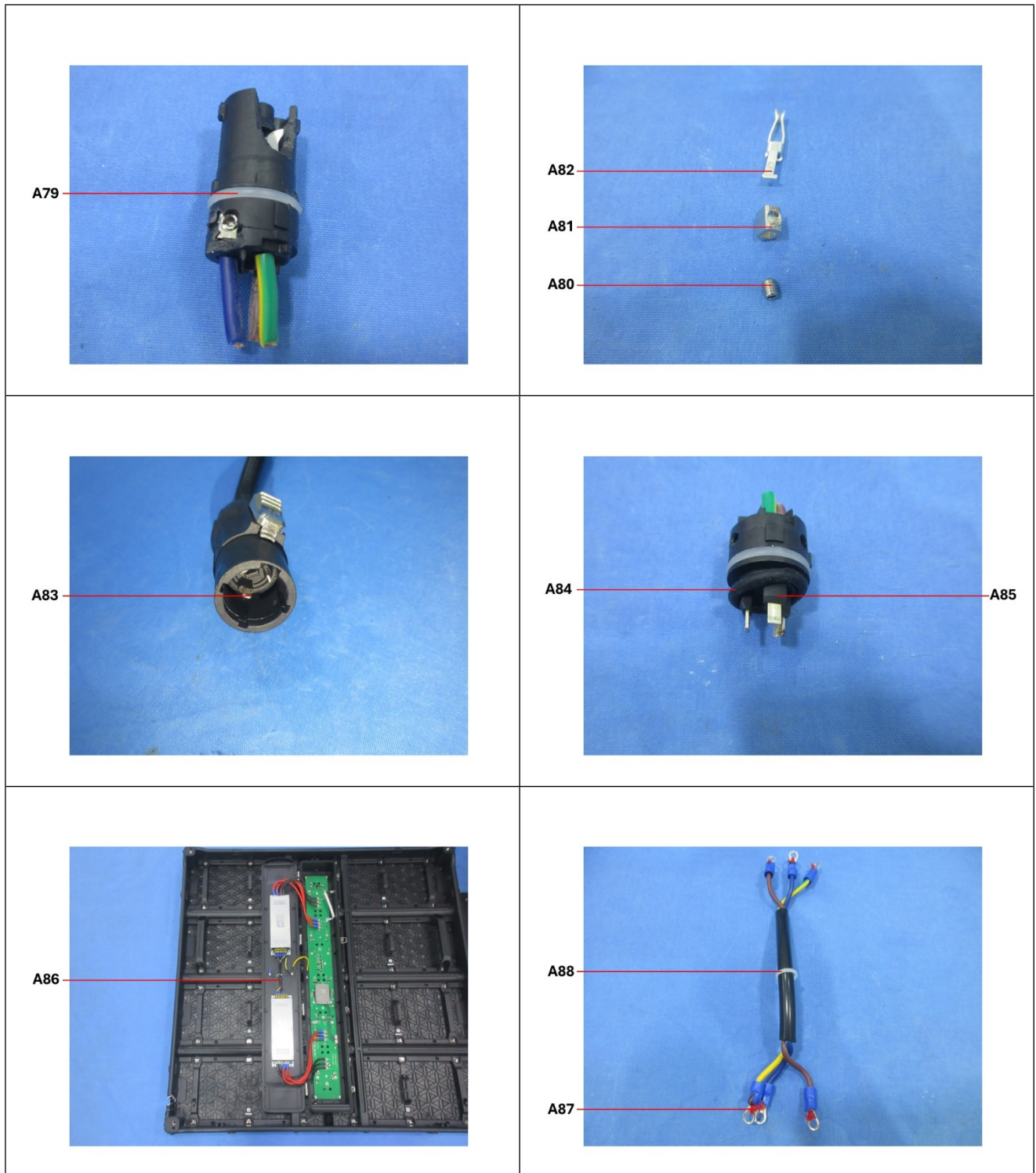


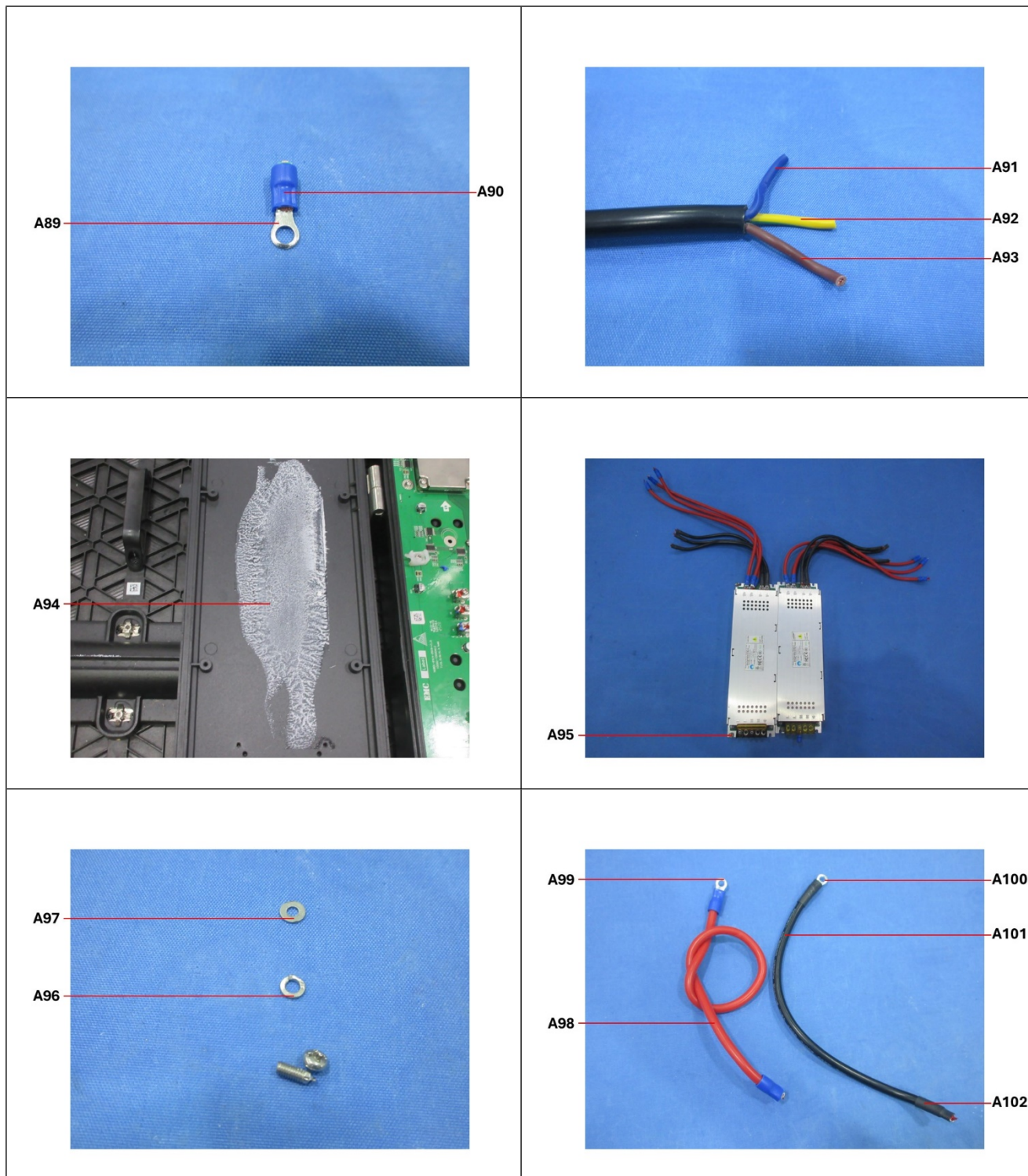


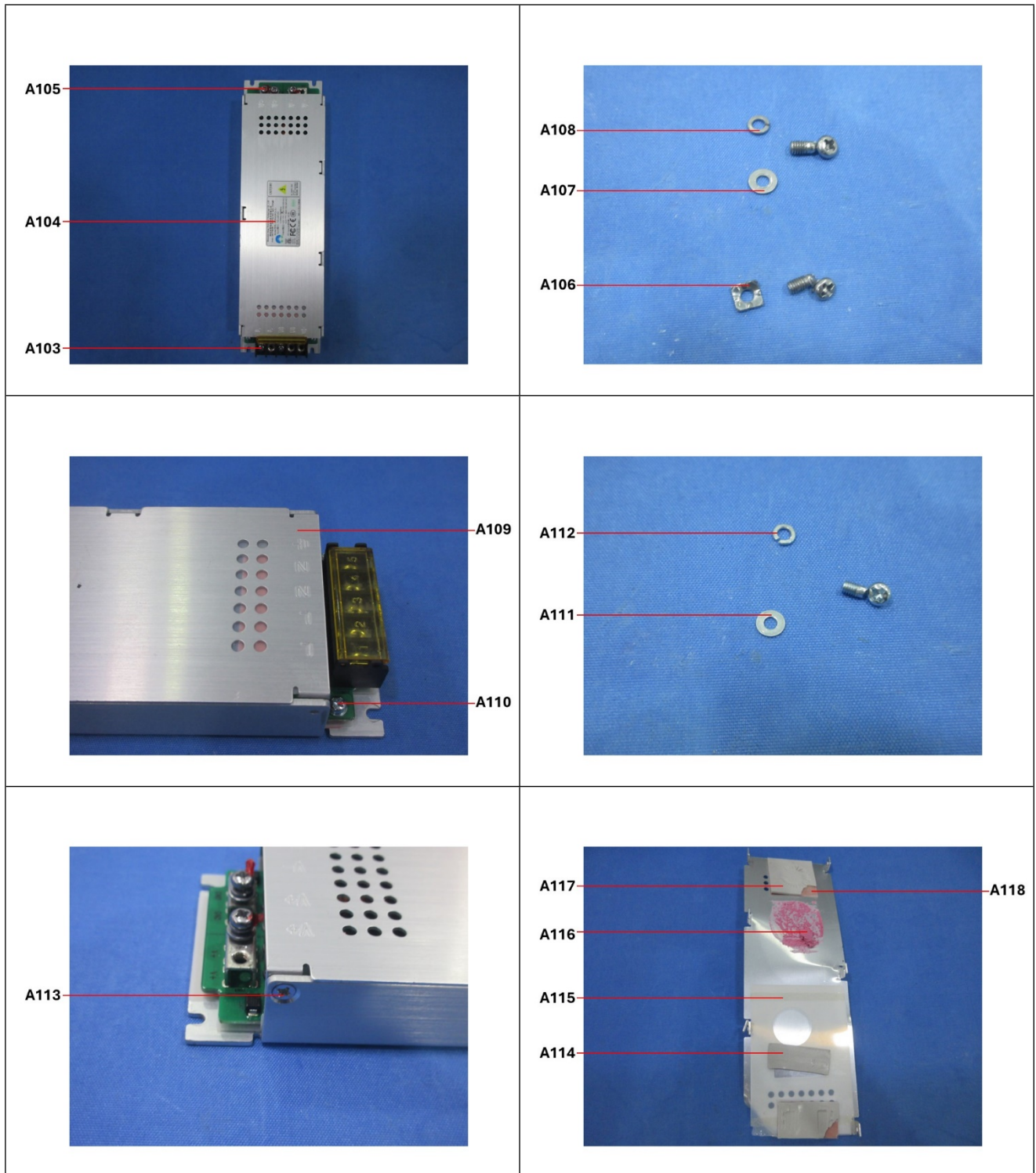










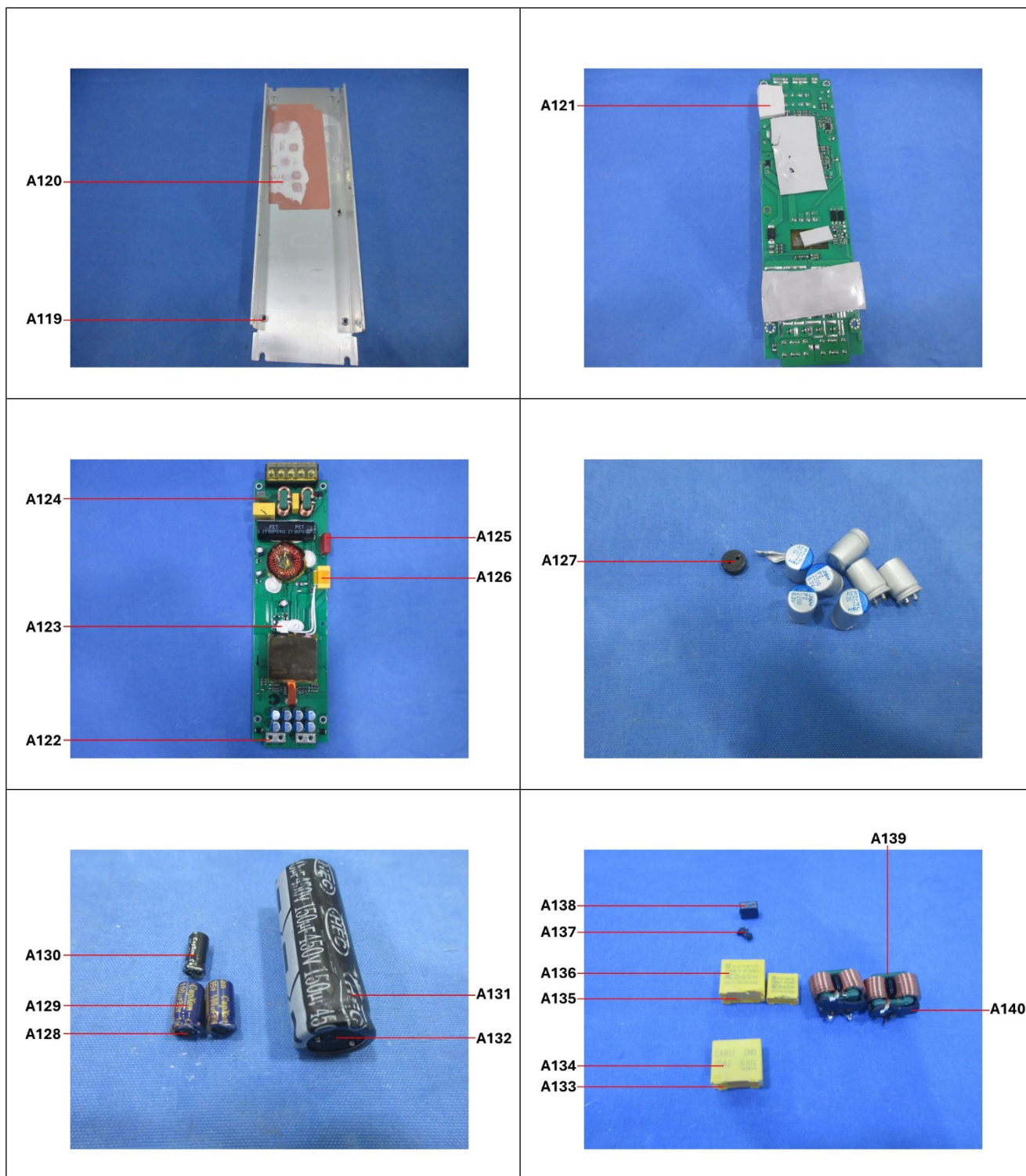


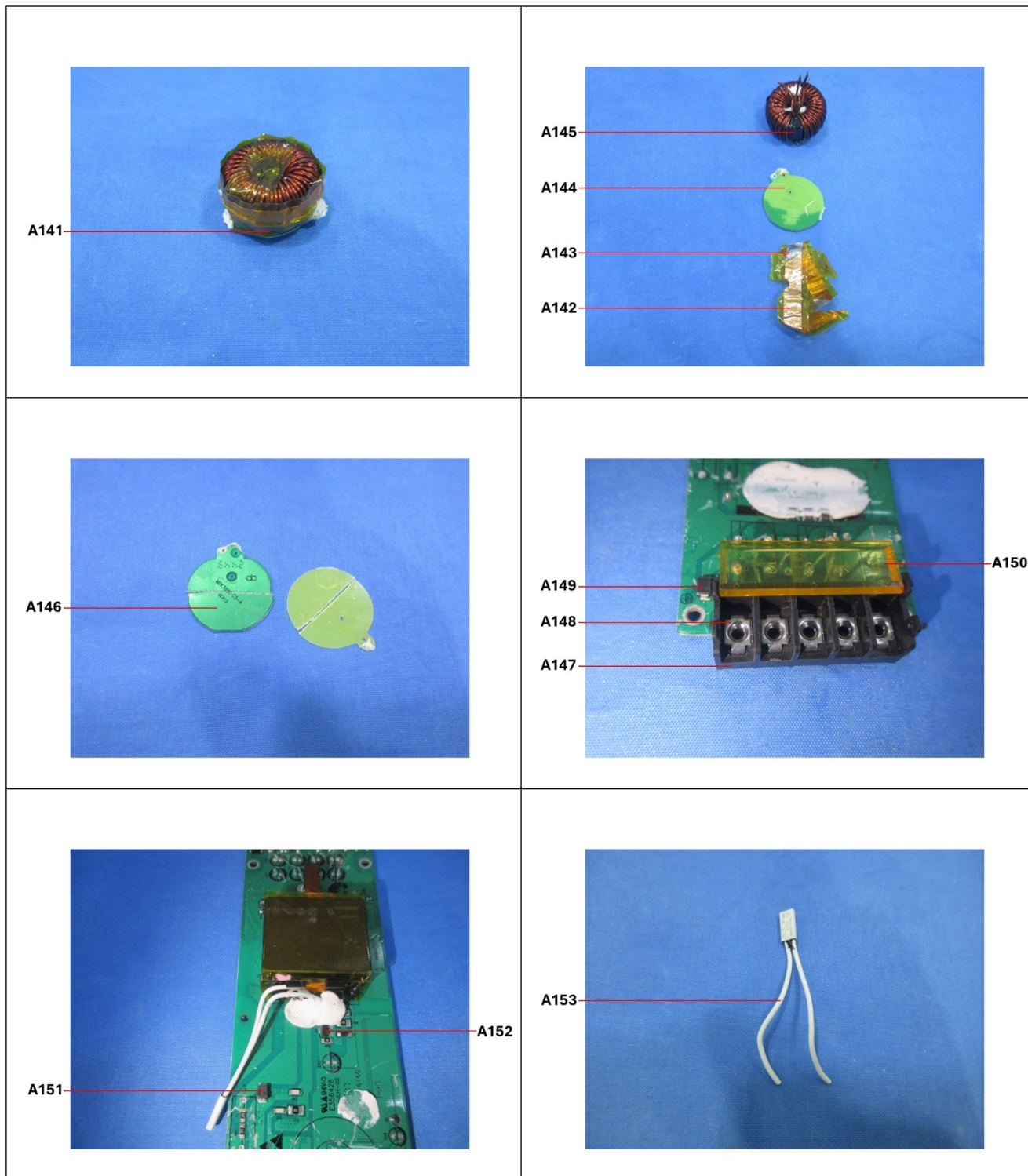
SGS-CTC (China) Technical Services Co., Ltd.
Shenzhen Branch

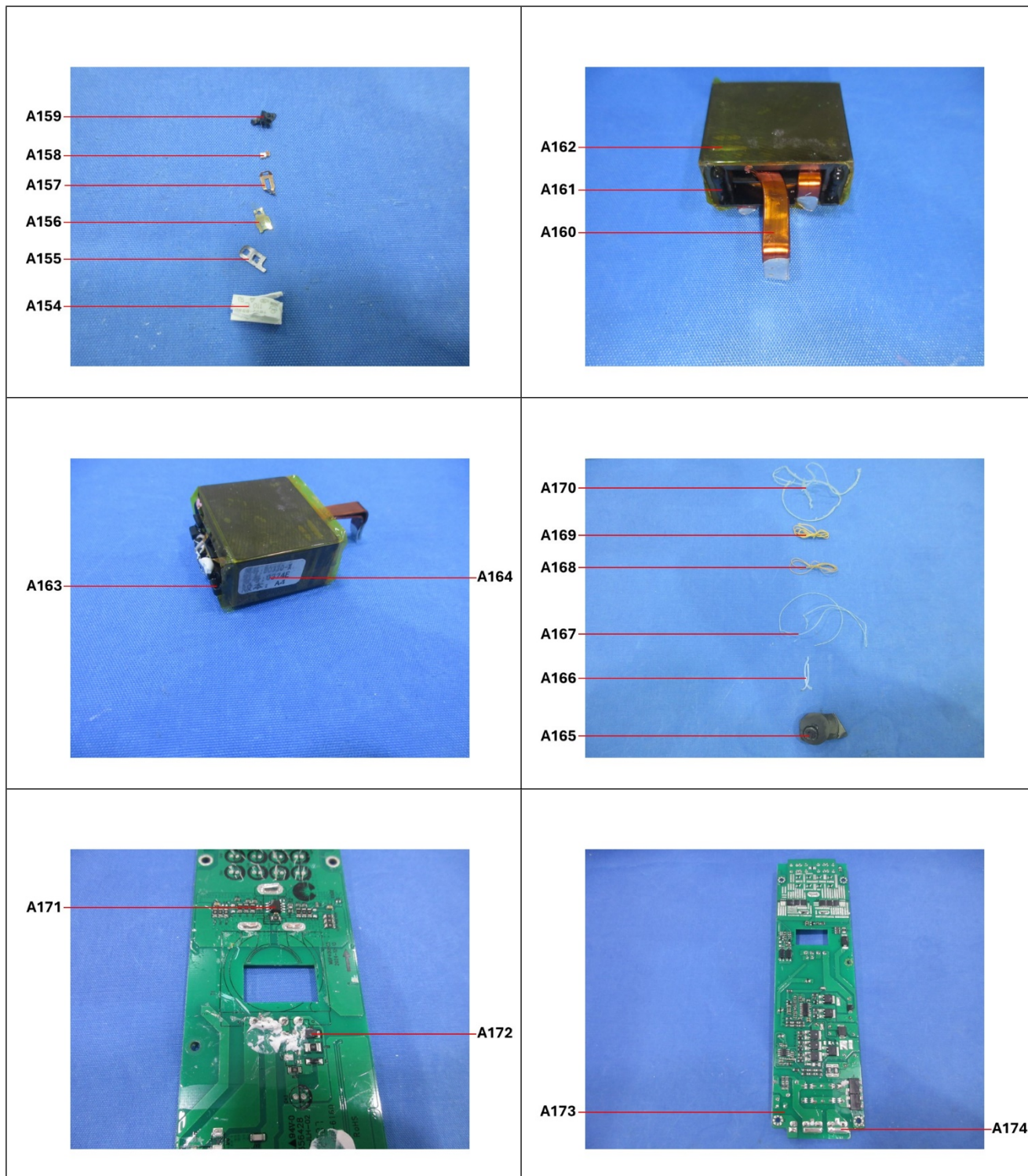
Unless otherwise agreed in writing, this document is issued by the Company subject to its General Conditions of Service printed overleaf, available on request or accessible at <https://www.sgs.com/en/Terms-and-Conditions>. Attention is drawn to the limitation of liability, indemnification and jurisdiction issues defined therein. Any holder of this document is advised that information contained hereon reflects the Company's findings at the time of its intervention only and within the limits of Client's instructions, if any. The Company's sole responsibility is to its Client and this document does not exonerate parties to a transaction from exercising all their rights and obligations under the transaction documents. This document cannot be reproduced except in full, without prior written approval of the Company. Any unauthorized alteration, forgery or falsification of the content or appearance of this document is unlawful and offenders may be prosecuted to the fullest extent of the law. Unless otherwise stated the results shown in this test report refer only to the sample(s) tested.

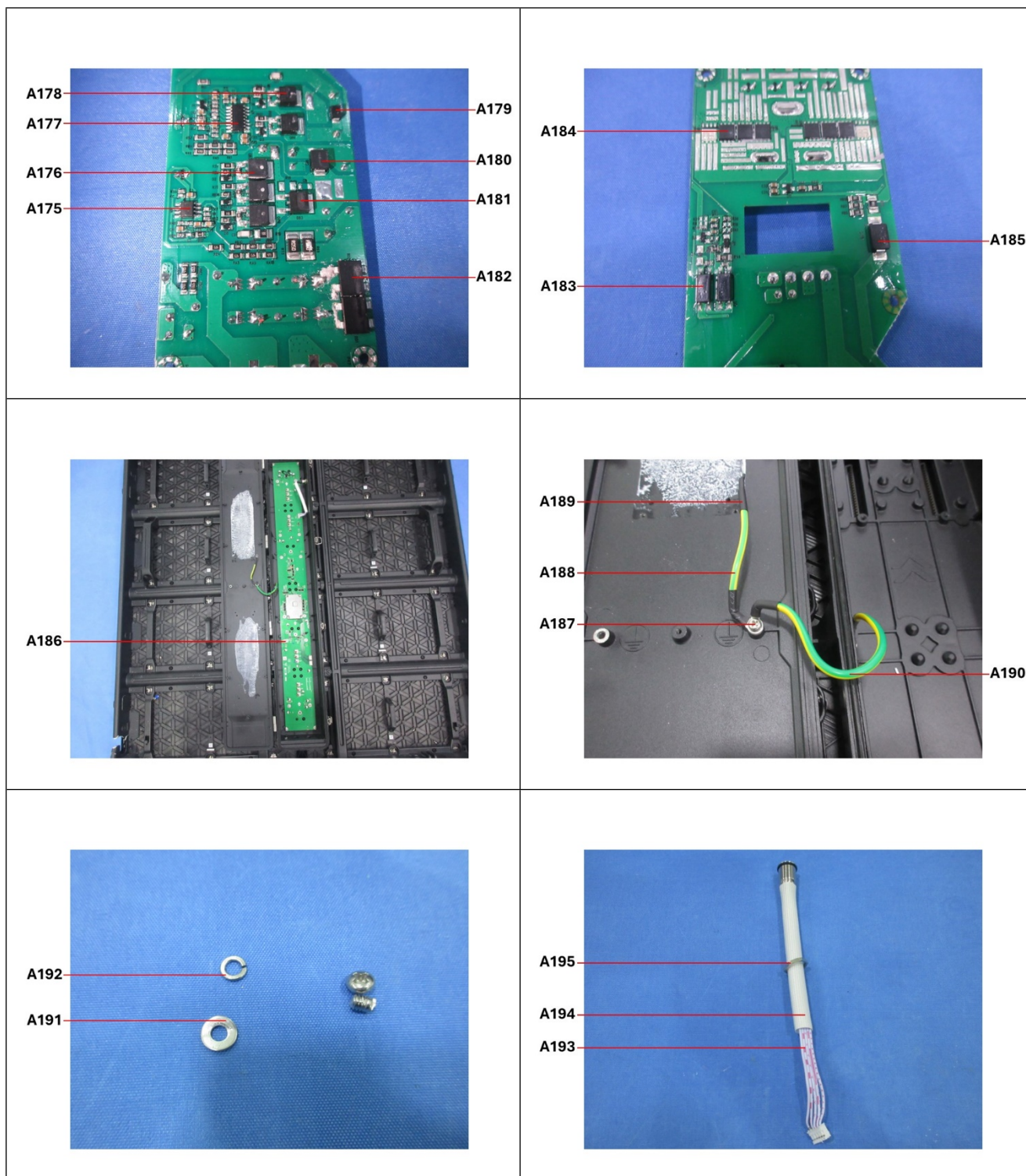
Attention: To check the authenticity of testing /inspection report & certificate, please contact us at telephone: (86-755) 8307 1443, or email: CN.Doccheck@sgs.com

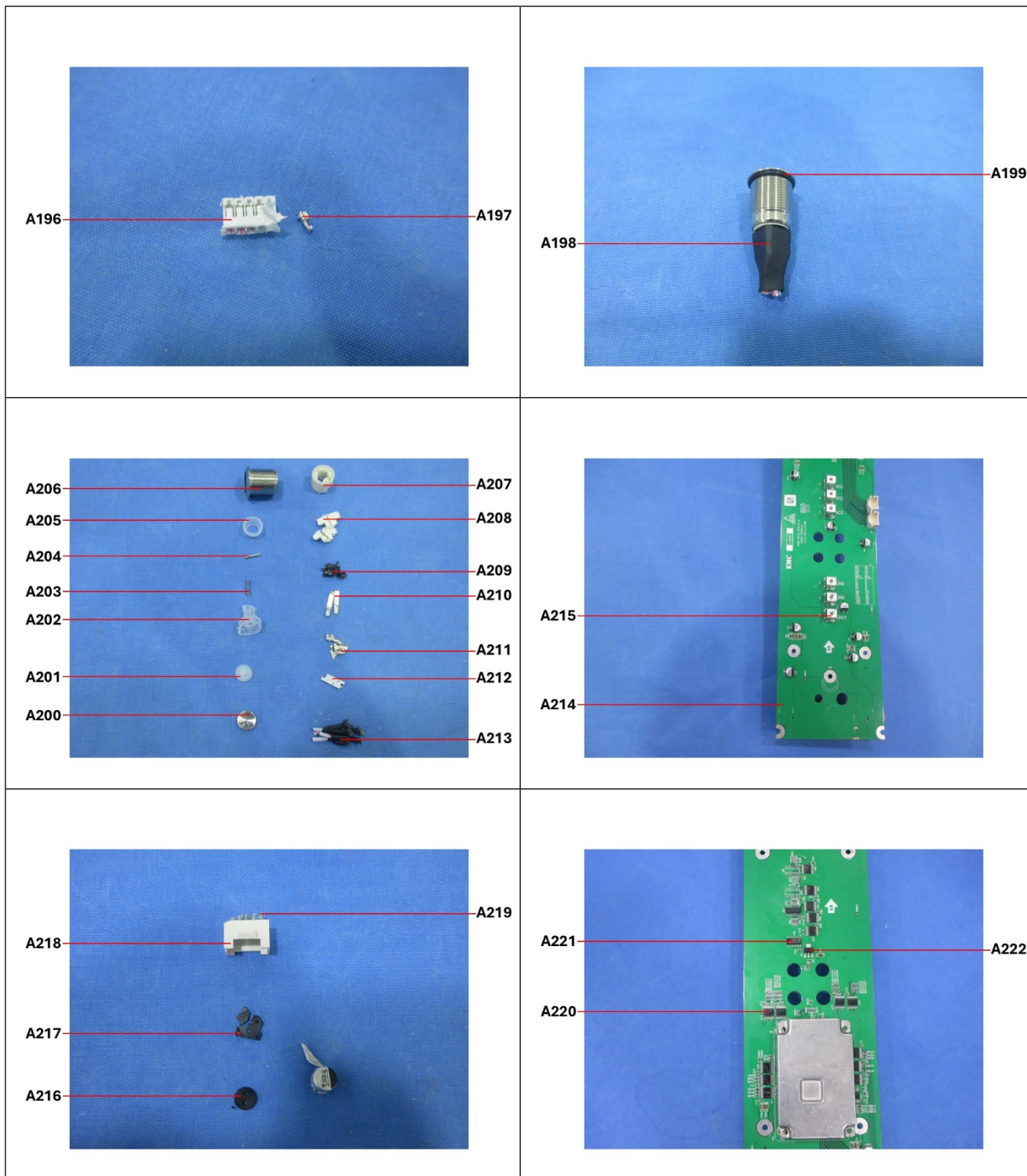
Room 101-901, Plant 4 & Room 101, Plant 2 & Room 101, Plant 3 & Room 301-501, Plant 3, Jianghao (Bantian) Industrial Plant Area, No. 430, Jihua Road, Bantian Community, Bantian Street, Longgang District, Shenzhen, Guangdong, China 518129 www.sgs.com.cn
中国·广东·深圳市龙岗区坂田街道坂田社区吉华路430号江豪(坂田)工业厂区厂房4号101-901、2号101、3号301-501 邮编:518129 t:(86-755) 25328888 sgs.china@sgs.com

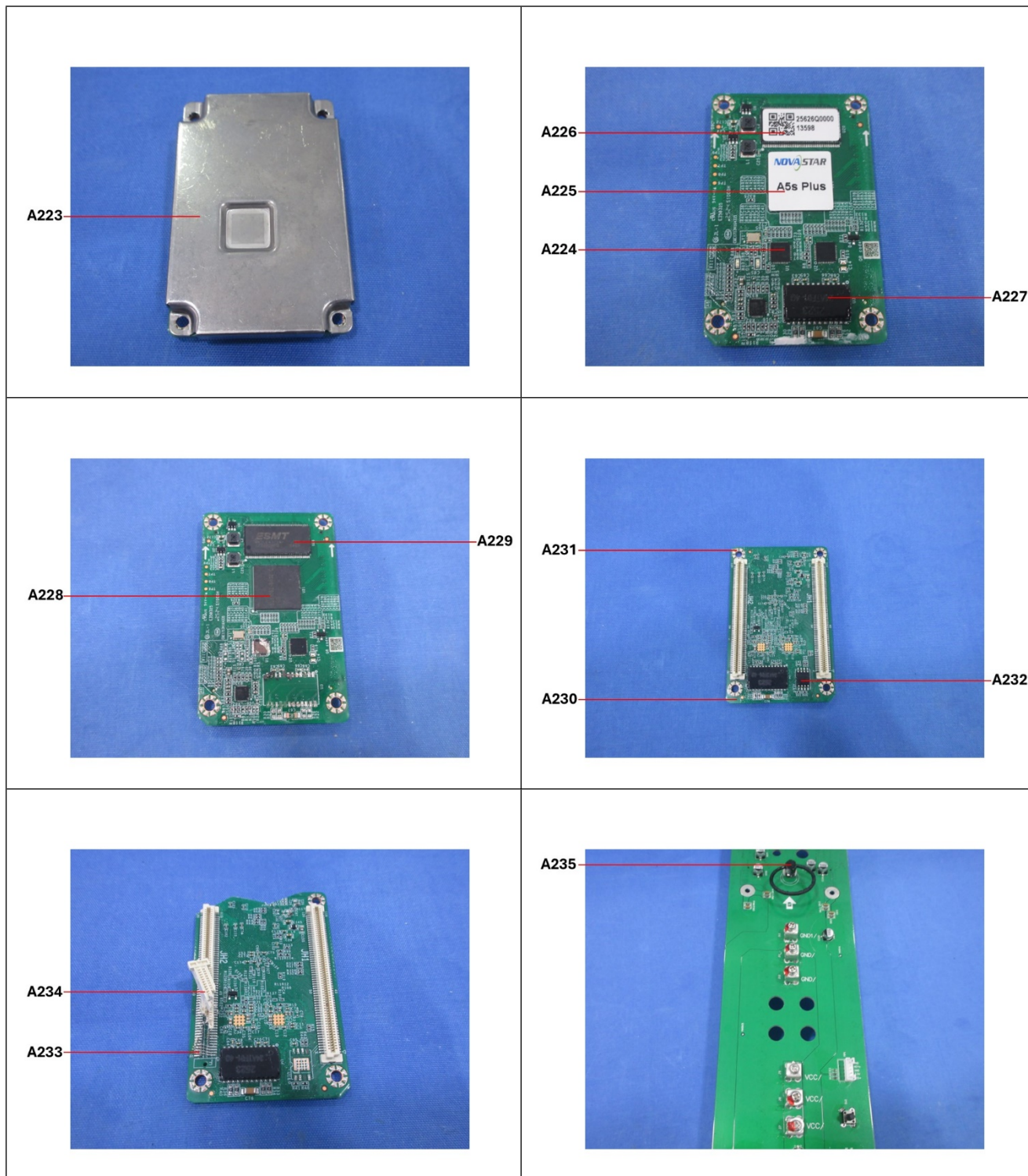


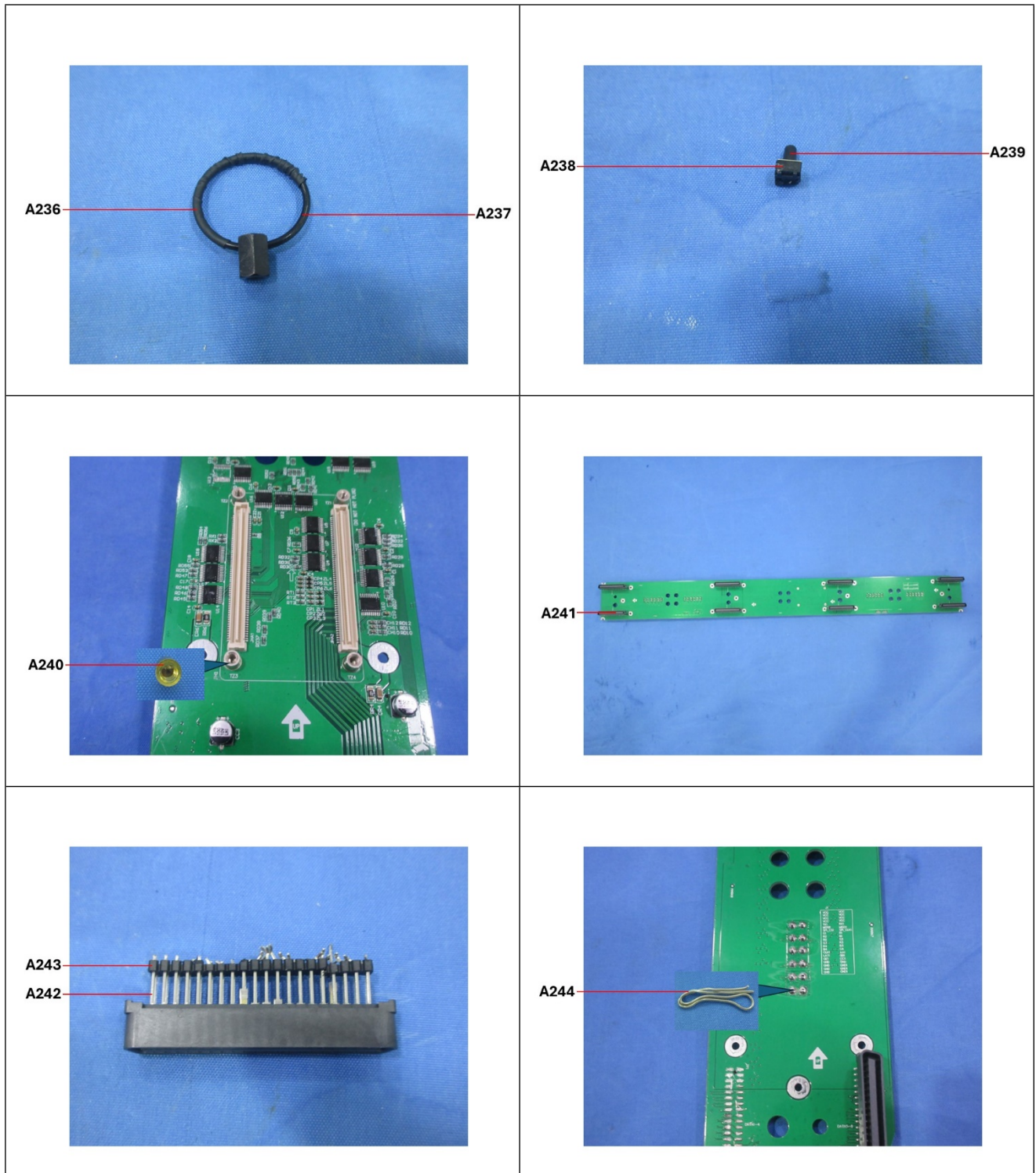










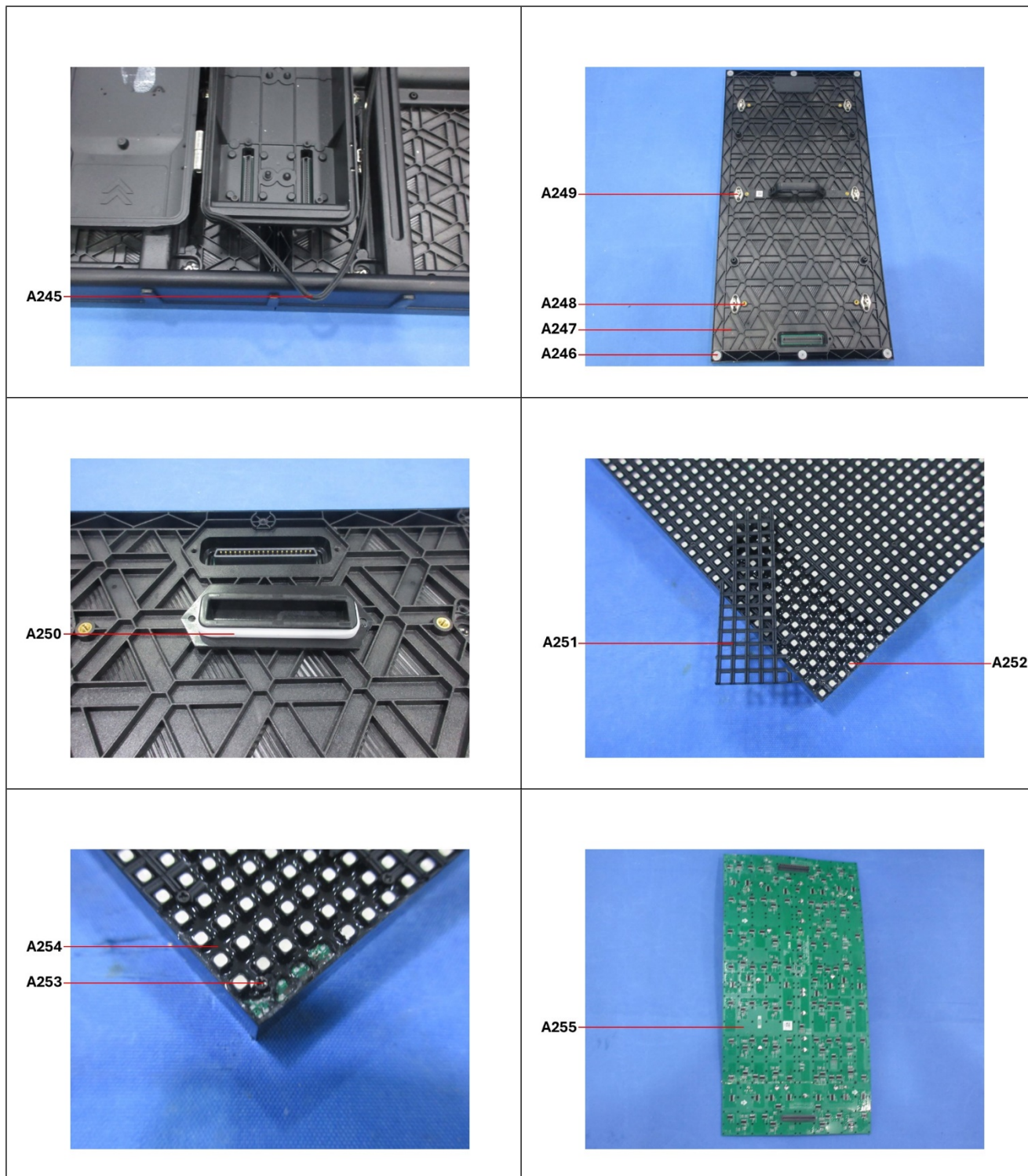


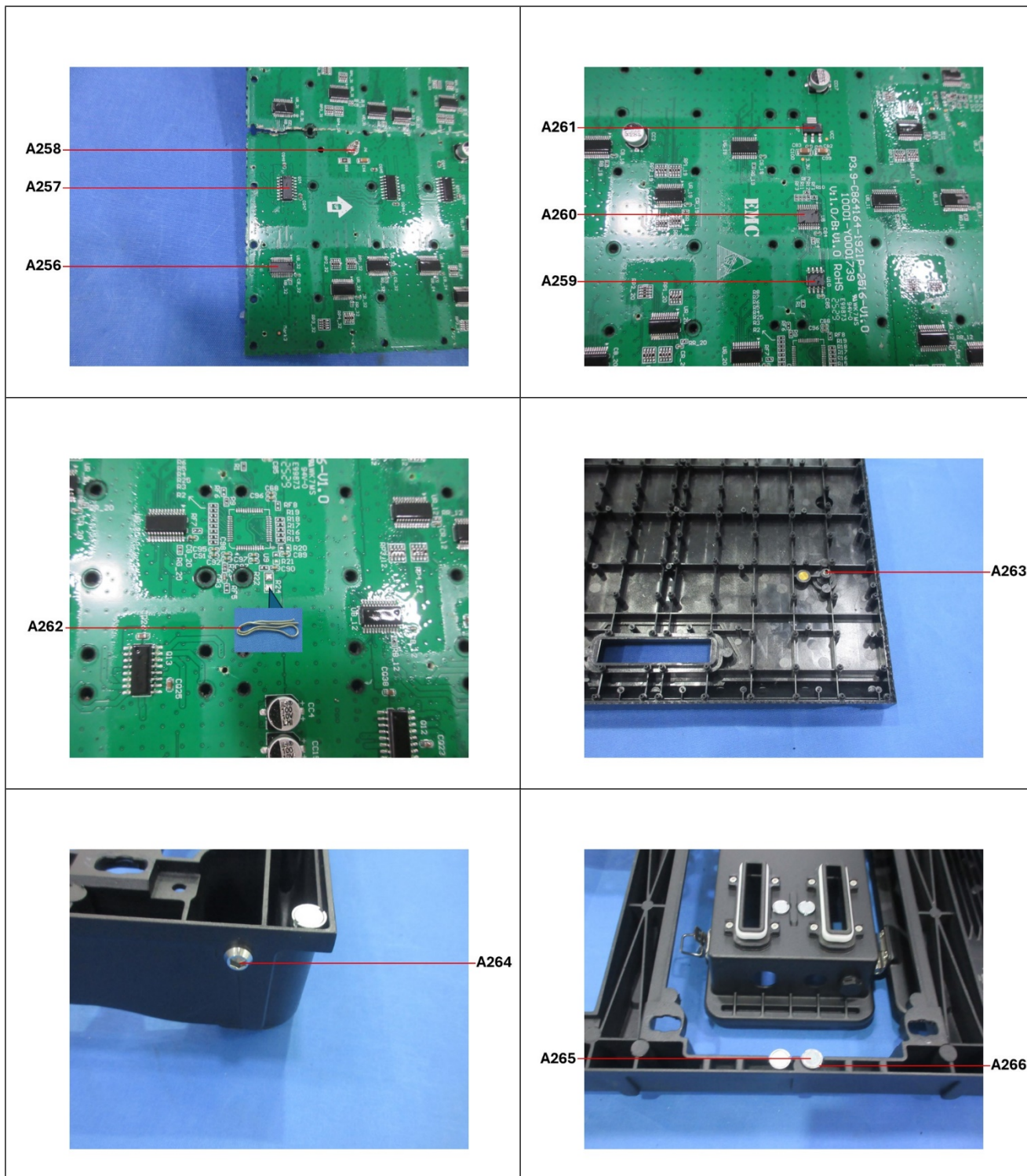
Unless otherwise agreed in writing, this document is issued by the Company subject to its General Conditions of Service printed overleaf, available on request or accessible at <https://www.sgs.com/en/Terms-and-Conditions>. Attention is drawn to the limitation of liability, indemnification and jurisdiction issues defined therein. Any holder of this document is advised that information contained hereon reflects the Company's findings at the time of its intervention only and within the limits of Client's instructions, if any. The Company's sole responsibility is to its Client and this document does not exonerate parties to a transaction from exercising all their rights and obligations under the transaction documents. This document cannot be reproduced except in full, without prior written approval of the Company. Any unauthorized alteration, forgery or falsification of the content or appearance of this document is unlawful and offenders may be prosecuted to the fullest extent of the law. Unless otherwise stated the results shown in this test report refer only to the sample(s) tested.

Attention: To check the authenticity of testing /inspection report & certificate, please contact us at telephone: (86-755) 8307 1443, or email: CN.Doccheck@sgs.com

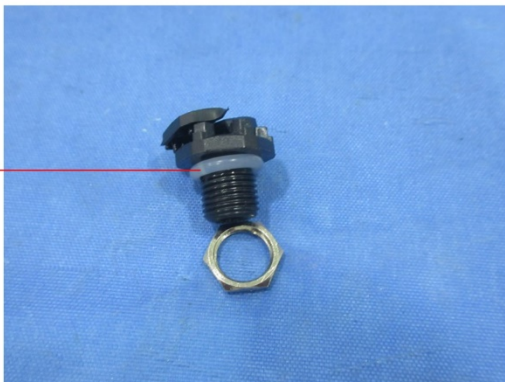
Room 101-901, Plant 4 & Room 101, Plant 2 & Room 101, Plant 3 & Room 301-501, Plant 3, Jianghao (Bantian) Industrial Plant Area, No. 430, Jihua Road, Bantian Community, Bantian Street, Longgang District, Shenzhen, Guangdong, China 518129 www.sgs.com.cn
中国·广东·深圳市龙岗区坂田街道坂田社区吉华路430号江豪(坂田)工业厂区厂房4号101-901、2号101、3号301-501 邮编:518129 sgs.china@sgs.com

Room 101-901, Plant 4 & Room 101, Plant 2 & Room 101, Plant 3 & Room 301-501, Plant 3, Jianghao (Bantian) Industrial Plant Area, No. 430, Jihua Road, Bantian Community, Bantian Street, Longgang District, Shenzhen, Guangdong, China 518129 www.sgs.com.cn
中国·广东·深圳市龙岗区坂田街道坂田社区吉华路430号江豪(坂田)工业厂区厂房4号101-901、2号101、3号301-501 邮编:518129 sgs.china@sgs.com





A267



SGS authenticate the photo on original report only
*** End of Report ***



Unless otherwise agreed in writing, this document is issued by the Company subject to its General Conditions of Service printed overleaf, available on request or accessible at <https://www.sgs.com/en/Terms-and-Conditions>. Attention is drawn to the limitation of liability, indemnification and jurisdiction issues defined therein. Any holder of this document is advised that information contained hereon reflects the Company's findings at the time of its intervention only and within the limits of Client's instructions, if any. The Company's sole responsibility is to its Client and this document does not exonerate parties to a transaction from exercising all their rights and obligations under the transaction documents. This document cannot be reproduced except in full, without prior written approval of the Company. Any unauthorized alteration, forgery or falsification of the content or appearance of this document is unlawful and offenders may be prosecuted to the fullest extent of the law. Unless otherwise stated the results shown in this test report refer only to the sample(s) tested.

Attention: To check the authenticity of testing /inspection report & certificate, please contact us at telephone: (86-755) 8307 1443, or email: CN.Doccheck@sgs.com

SGS-CHINA Standards Technical Services Co., Ltd.
Shenzhen Branch Laboratory

Room 101-901, Plant 4 & Room 101, Plant 2 & Room 101, Plant 3 & Room 301-501, Plant 3, Jianghao (Bantian) Industrial Plant Area, No. 430, Jihua Road, Bantian Community, Bantian Street, Longgang District, Shenzhen, Guangdong, China 518129 www.sgs.com
中国·广东·深圳市龙岗区坂田街道坂田社区吉华路430号江豪(坂田)工业厂区厂房4号101-901、2号101、3号101、3号301-501 邮编:518129 t:(86-755) 25328888 sgs.china@sgs.com