

CUECORE2 MANUAL



Revision History

| Revision | Date | Author(s) | Description |
|----------|------------|-----------|--|
| 1 | 05.12.2016 | ME | Initial version. |
| 2 | 17.10.2017 | ME | Added: Rackmount accessory, MSC API, GPI wiring examples & password protection feature. Improved quickstart system diagrams. Replaced VisualTouch info by Kiosc. Updated timecode functionality. |
| 3 | 07.06.2018 | ME | Updated vManager chapter to reflect app-store distribution. Moved majority of Kiosc information to a dedicated Kiosc manual. Added timespan settings and API feedback. |
| 4 | 25.06.2019 | BZ | Updated what's in the box. Added new Tasks. Wrote new Quickstart: Configure as an Art-Net node. Updated API appendix |

Contents

| | | |
|-----------|----------------------------|------------|
| 1 | Introduction | 6 |
| 2 | Protocols | 12 |
| 3 | Quickstart | 18 |
| 4 | Setting up | 31 |
| 5 | Network | 33 |
| 6 | Operating Modes | 37 |
| 7 | Tracks | 41 |
| 8 | Playbacks | 49 |
| 9 | Show Control | 56 |
| 10 | Protocol Conversion | 63 |
| 11 | Monitors | 68 |
| 12 | Settings | 70 |
| 13 | vManager | 79 |
| 14 | Kiosc | 84 |
| | Appendices | 85 |
| A | Trigger Types | 86 |
| B | Task Types | 95 |
| C | Templates | 104 |
| D | API | 105 |

©2019 Visual Productions BV. All rights reserved.

No parts of this work may be reproduced in any form or by any means - graphic, electronic, or mechanical, including photocopying, recording, taping, or information storage and retrieval systems - without the written permission of the publisher.

While every precaution has been taken in the preparation of this document, the publisher and the author assume no responsibility for errors or omissions, or for damages resulting from the use of information contained in this document or from the use of programs and source code that may accompany it. In no event shall the publisher and the author be liable for any loss of profit or any other commercial damage caused or alleged to have been caused directly or indirectly by this document.

Due to the dynamic nature of product design, the information contained in this document is subject to change without notice. Revisions of this information or new editions may be issued to incorporate such changes.

Products that are referred to in this document may be either trademarks and/or registered trademarks of the respective owners. The publisher and the author make no claim to these trademarks.



EU Declaration of Conformity

We, manufacturer Visual Productions BV, hereby declare under sole responsibility, that the following device:

CueCore2

Conforms to the following EC Directives, including all amendments:
EMC Directive 2014/30/EU

And the following harmonized standards have been applied:

NEN-EN-IEC 61000-6-1:2007

NEN-EN-IEC 61000-6-3:2007

The object of the declaration is in conformity with the relevant Union harmonisation Legislation.

Full name and identification of the person responsible for product quality and accordance with standards on behalf of the manufacturer

Date:
August 21th, 2018

Place:
Haarlem, The Netherlands



ing. Maarten Engels
Managing Director
Visual Productions BV

Chapter 1

Introduction

Thank you for choosing the CueCore2; a lighting controller designed for (semi-)permanent installations. The engineering team at Visual Productions is proud to present to you the latest development in solid-state lighting control.



Figure 1.1: CueCore2

At the time of writing this manual the CueCore2's firmware was at version 1.31.

1.1 Design Goals

After successfully developing and marketing the original CueCore1, the team at Visual Productions set out to design a new generation stand-alone lighting controller. We took our experience in developing solid-state controllers and combined it with the feedback received from CueCore1 users all over the world. We added our lessons learnt from supporting year's worth of projects and installs, all in order to design the best lighting controller for (semi-)permanent installations. During the design process we focused on a set of priorities that we valued the most:

1.1.1 Solid-State

The solid-state aspect was perhaps the most important trait that made the CueCore1 a default choice for many system designers. The CueCore2 continues this design without any moving part, without forced cooling, and its data safely stored in flash memory. The resulted reliability outperforms any PC based lighting system.

1.1.2 Multi-zone Replay Unit

One of the principle functions of the CueCore2 is to playback DMX shows. We took a lot of consideration into making this feature as powerful as possible with the given hardware platform. The playback mechanism we developed can control six different zones. Each zone will be controlled by a completely independent playback. This playback features many options that provides the freedom to the users to employ very smart programming. These options include intensity, rate, precedence, release-time, repeating, fading and inter-cue conditions.

1.1.3 Networking

Our world is one big connected network and the CueCore2 will blend in nicely. This Ethernet-based device is setup via DHCP or static address, hosts a modern web-interface for programming and is of course also powered by PoE.

1.1.4 Protocol Conversion

One of the strongest Unique Selling Points of the products designed at Visual Productions is the number of communication protocols supported. The CueCore2 further raises this bar. It contains protocols familiar to the CueCore1 (DMX, Art-Net, UDP, OSC) and introduces a fresh set of new protocols: sACN, KiNet, TCP and NTP. This vast collection of protocols can be used for recording, sending, triggering and converting.

1.1.5 Scalability

One CueCore2 can do a lot, multiple CueCore2 units can do even more. Through using CueluxPro it is possible to control up to 32 universes by connecting multiple CueCore2 units. For stand-alone scenarios we even developed a brand new Master/Slave protocol that, once set up with just a few mouse clicks, allows 25 CueCore2 to work together and keep 50 universes synchronised at 40 frames per second.

We hope that you enjoy integrating the CueCore2 into your lighting designs.

The CueCore2 engineering team.

1.2 Features

The feature set of the CueCore2 includes:

- 2 x DMX-512 optically isolated port (bi-directional)
- 4x GPI
- MIDI, MSC & MMC
- SMPTE, MTC & Art-Net timecode
- Art-Net, sACN & KiNet
- TCP, UDP & OSC
- Master-slave protocol for synchronising multiple CueCore2 units
- Scheduling with Real-Time clock¹, weekdays and sunrise/sunset
- NTP time synchronisation
- Desktop or DIN Rail mounted
- Kensington lock
- Locked power cable protection
- PoE (Power Over Ethernet) Class I
- Bundled with CueluxPro, vManager and Kiosc software

1.3 Comparison

The following table visualises the difference between the QuadCore, CueCore2 and CueCore1 . This overview might prove to be helpful to CueCore1 users considering choosing the model for their new designs.

¹Please note that there is no battery fitted inside the CueCore2. The Real-Time clock has a backup charge through means of a super-capacitor.

| | QuadCore | CueCore2 | CueCore1 |
|-------------------|--------------------|--------------------|--------------|
| CPU Speed | 180MHz | 180MHz | 120MHz |
| Flash memory | 32MB | 32MB | 8MB |
| DMX Outputs | 4 | 2 | 2 |
| DMX Inputs | switchable outputs | switchable outputs | 1 |
| MIDI | - | input+output | in+thru+out |
| GPI | - | 4x digital/analog | 4x digital |
| SMPTE | - | input | input |
| MTC | - | input+output | input |
| Art-Net | input+output | input+output | input+output |
| sACN | input+output | input+output | - |
| KiNet | output | output | - |
| TCP | input | input | - |
| UDP | input+output | input+output | input+output |
| OSC | input+output | input+output | input+output |
| POE | class I | class I | class I |
| DHCP | yes | yes | - |
| NTP | yes | yes | - |
| Real-time Clock | yes | yes | yes |
| CueluxPro Licence | 4 universes | 2 universes | 2 universes |

1.4 Limitations

The CueCore2 is a powerful device with many possibilities, there are however some limitations, as shown in the following table.

| | |
|---------------------|-----|
| Playbacks | 6 |
| Cues per Playback | 32 |
| Tracks | 128 |
| Action lists | 8 |
| Actions per list | 48 |
| Actions system-wide | 64 |
| Tasks per Action | 8 |
| Tasks system-wide | 128 |
| Variables | 10 |
| Timers | 4 |

1.5 What's in the box?

The CueCore2 packaging contains the following items (see figure 1.2):

- CueCore2
- Ethernet cable
- 6-pin terminal
- Power supply
- 4x international plug
- Info card



Figure 1.2: CueCore2 box contents

1.6 Saving data to memory

This manual will describe how to configure the CueCore2 and program tracks, playbacks, action, etc. The unit's web-interface is used for editing these kinds of elements. When changes are made, these changes are directly stored in the RAM memory of the CueCore2 and the programming will directly influence the behaviour of the unit. RAM memory is, however, volatile and its content will be lost through a power cycle. For this reason the CueCore2 will copy any changes in the RAM memory to its onboard flash memory. Flash memory retains its data even when not powered. The CueCore2 will load all its data back from the flash memory upon startup.

This memory copy process is conducted automatically by the CueCore2 and should not be of any concern of the user. One point of consideration is, however, that after making a change the unit should be given time to perform the copy to flash. As a rule of thumb, do not disconnect the power from the device within 30 seconds from making a programming change.

1.7 Document organisation

This manual discusses setting up and programming the unit. Chapter 2 provides background information on the communication protocols used the CueCore2. Chapters 4 and 5 cover how to set up the unit and configure the network connection.

Chapter 7 and 8 cover recording, storing and playback of lighting content.

Programming the automation, triggering and converting functionality is done in the 9 chapter.

When in a hurry, you could skip all chapters and directly follow the quickstart tutorials in chapter 3.

1.8 Further Help

If, after reading this manual, you have further questions then please consult the online forum at <http://forum.visualproductions.nl/forum/> for more technical support.

Chapter 2

Protocols

The CueCore2 is fitted with several communication ports and supports various protocols. This chapter describes these protocols and to which extent they are implemented in the CueCore2

2.1 DMX-512

DMX-512 is the standard communication protocol for stage lighting. Its official name is E1.11-2008 USITT DMX512-A. Nowadays the reach of the DMX protocol has extended beyond entertainment lighting and is also used for architectural lighting.

Originally one DMX network contained 512 channels which is called a 'universe'. With the growing size and complexity of lighting systems it is now very common for a system to compose of multiple universes, each conveying 512 channels.

It is advised to use a shielded twisted pair cable for DMX cabling. The cable should be terminated with an 120 Ohm resistor.

DMX-512 is a very successful protocol with, however, a few limitations. The maximum number of attached devices is limited to 32 and they all have to be connected in bus-topology having one cable running via each device. Furthermore, a DMX-512 cable should not be longer than 300 meters.



Figure 2.1: Visual Productions' RdmSplitter

The DIN Rail RdmSplitter from Visual Productions (See figure 2.1) helps tackle those inconvenient limitations. The Splitter takes a DMX signal and sends it out again on its 6 DMX output ports for scaling group topology. Each output port is capable of driving 32 more devices. The Splitter can also function as a signal booster as each port supports another 300 meter long connection.

The CueCore2 has two ports and is therefore able to control 1,048 channels. Each port can also be configured to become a DMX input allowing external DMX data to be recorded or to use an external DMX source to trigger events within the CueCore2.

2.2 Art-Net

The Art-Net protocol primarily transfers DMX-512 data over Ethernet. The high bandwidth of an Ethernet connection allows Art-Net to transfer up to 256 universes.

The data sent out for Art-Net does put a certain load on the network, therefore it is recommended to disable Art-Net when not in use.

Additional to transmitting DMX-512 data, Art-Net can also be used for transferring timecode information for equipment synchronisation.

Each CueCore2 supports sending and receiving of 2 Art-Net universes as well as receiving Art-Net timecode.

2.3 sACN

The streaming Architecture of Control Networks (sACN) protocol uses a method of transporting DMX-512 information over TCP/IP networks. The protocol is specified in the ANSI E1.31-2009 standard.

The sACN protocol supports multi-cast in order to take efficient use of the network's bandwidth.

The CueCore2 supports sending and receiving of 2 sACN universes.

2.4 KiNet

KiNet is a proprietary protocol of Philips Color Kinetics to control their LED fixtures and power supplies. It is a lightweight Ethernet-based protocol that carries DMX-style data. Within the CueCore2 it can only be used to output data.

2.5 TCP

The Transmission Control Protocol (TCP) is a core protocol of the Internet Protocol Suite. It is used for its reliable, ordered and error checked delivery of a stream of bytes between applications and hosts over IP networks. It is considered 'reliable' because the protocol itself checks to see if everything that was transmitted was delivered at the receiving end. TCP allows for the retransmission of lost packets, thereby making sure that all data transmitted is received.

The CueCore2 supports reception of TCP message.

2.6 UDP

User Datagram Protocol (UDP) is a simple protocol for sending messages across the network. It is supported by various media devices like video projectors and Show Controllers. It does not incorporate error checking, therefore it is faster than TCP but less reliable.

There are two ways how to have the CueCore2 respond to incoming UDP messages. The API (see page 107) makes typical CueCore2 functions available through UDP. Furthermore, custom messages can be programmed in the Show Control page (see page 56). This is also the place where to program outgoing UDP messages.

2.7 OSC

Open Sound Control (OSC) is a protocol for communicating between software and various multi-media type devices. OSC uses the network to send and receive messages, it can contain various information.

There are apps available for creating custom-made user interfaces on iOS (iPod, iPhone, iPad) and Android. These tools allow to program fool-proof user-interfaces for controlling the device. E.g. Kiosk from Visual Productions.

There are two ways how to have the CueCore2 respond to incoming OSC messages. Firstly, the API (see page 105) makes typical CueCore2 functions available through OSC. Secondly, custom messages can be programmed in the Show Control page (see page 56).

2.8 GPI

The CueCore2 features four General Purpose Inputs (GPI) ports that can be connected to external equipment, switches and sensors. State changes on these GPI ports can be used to trigger programmed events inside the CueCore2.

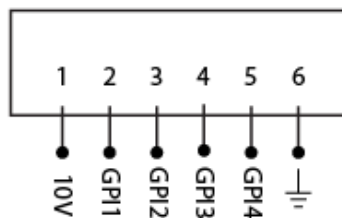


Figure 2.2: GPI Pinout

Each GPI port can be switched between 'digital' and 'analog'. In the digital mode the signal is held up by an internal pull-up resistor and results in a logic '0'. The external equipment is intended to short the port's pin to the provided ground pin. This short will create a logic '1'. All four ports share one common ground pin.

When set to analog the external equipment is supposed to supply a voltage between 0V and 10V to the port's pin. For convenience, a 10V supply is available on one of the pins of the GPI connector. Please refer to figure 2.2 for the pinout of the GPI connector. **Be careful not to supply more than 10V to the GPI port as that might cause permanent damage.**

Figure 2.3 shows examples of how to wire a contact-closure to a GPI port set to digital. And it shows an example of potentiometer connected to a GPI port set to analog.

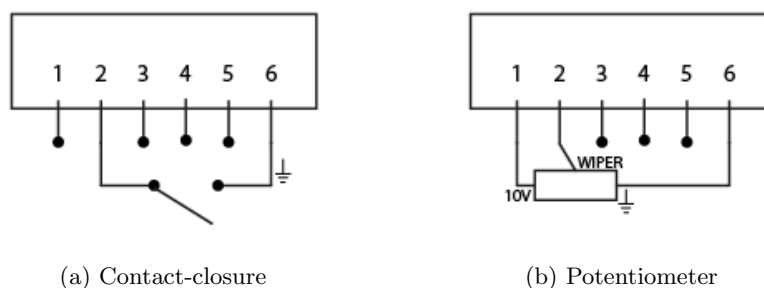


Figure 2.3: GPI Wiring examples

Please refer to page 77 for more information on configuring the GPI ports. Programming events based on GPI activity is done in the Show Control page, which is discussed on page 56.

2.9 MIDI

The MIDI protocol is intended for inter-connecting musical devices such as synthesisers and sequencers. Furthermore, this protocol is also very suitable to send triggers from one device to another and is often used to synchronise audio, video and lighting equipment. There is also a large collection of MIDI control surfaces available; user-interface consoles with knobs, (motorised-)faders, rotary-encoders, etc.

The CueCore2 is fitted with a MIDI input and MIDI output port. It supports receiving and sending MIDI messages like NoteOn, NoteOff, ControlChange and ProgramChange.

2.9.1 MTC

MIDI Timecode (MTC) is the timecode signal which is embedded into MIDI. The CueCore2 supports receiving and transmitting MTC. It is not recommended to combine the use of MTC with ordinary MIDI as MTC consumes the bandwidth of the MIDI connection.

2.9.2 MMC

MIDI Machine Control (MMC) is part of the MIDI protocol. It defines special messages for controlling audio equipment such as multi-track recorders. The CueCore2 supports the sending of MMC commands; please refer to page 99.

2.9.3 MSC

MIDI Show Control (MSC) is an extension of the MIDI protocol. It comprises of commands for synchronising show equipment like lighting, video and audio devices. The CueCore2 supports receiving MSC commands. This support is hard coded and does not require any Show Control programming. Please refer to appendix D.4.

2.10 SMPTE

SMPTE is timecode signal which can be used to synchronise audio, video, lighting and other show equipment. The CueCore2 supports receiving SMPTE that is transferred as an audio signal, also known as LTC timecode.

The CueCore2 only supports receiving timecode. If a timecode generator is required then the Visual Productions' TimeCore is recommended as shown in figure 2.4.



Figure 2.4: TimeCore

2.11 NTP

Network Time Protocol (NTP) is a networking protocol for clock synchronisation between computer systems over networks.

The real-time clock (RTC) in the CueCore2 can be synchronised to an external time server using the NTP protocol.

2.12 DHCP

The Dynamic Host Configuration Protocol (DHCP) is a standardised network protocol used on Internet Protocol (IP) networks for dynamically distributing network configuration parameters, such as IP addresses.

The CueCore2 is a DHCP client.

Chapter 3

Quickstart

This chapter provides step by step tutorials on how to program your CueCore2 for some typical tasks:

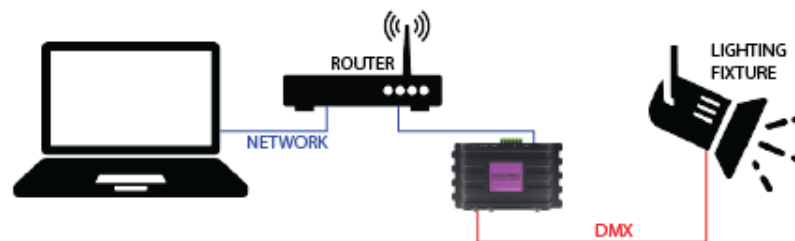
- Playback lighting scenes based on the scheduler
- Choose between different lighting scenes via incoming UDP messages
- Record a show from an external DMX console
- Configure the device to be an Art-Net Node

3.1 Playback based on scheduler

This tutorial shows how to create a lighting scene and have it activated at a certain time of the day. The scene will be de-activated at another time. Follow the steps below:

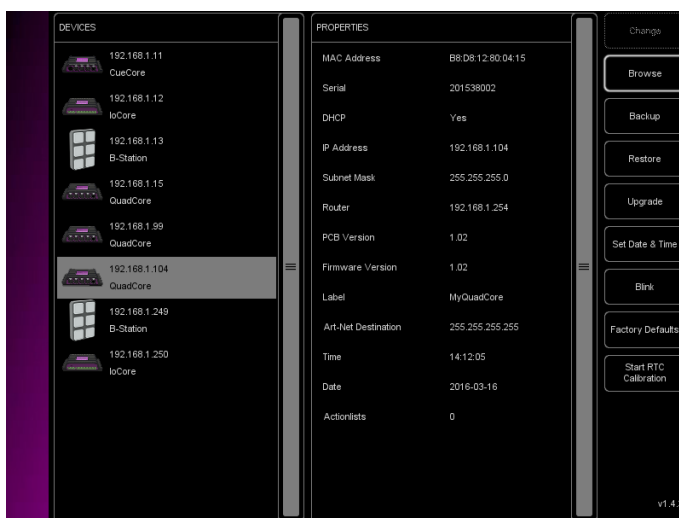
1. Connect to the network

Connect the CueCore2 with an Ethernet cable to the router. It is required that the network is managed by a router that features a DHCP server. If the network router is not DHCP capable then read the network chapter on page 33 for alternative setups.



2. Install the vManager

To access the web-interface of the CueCore2, the vManager tool is required. This tool can be downloaded from the Visual Productions website. Once the installation is complete, run the vManager to discover the IP address of the CueCore2.

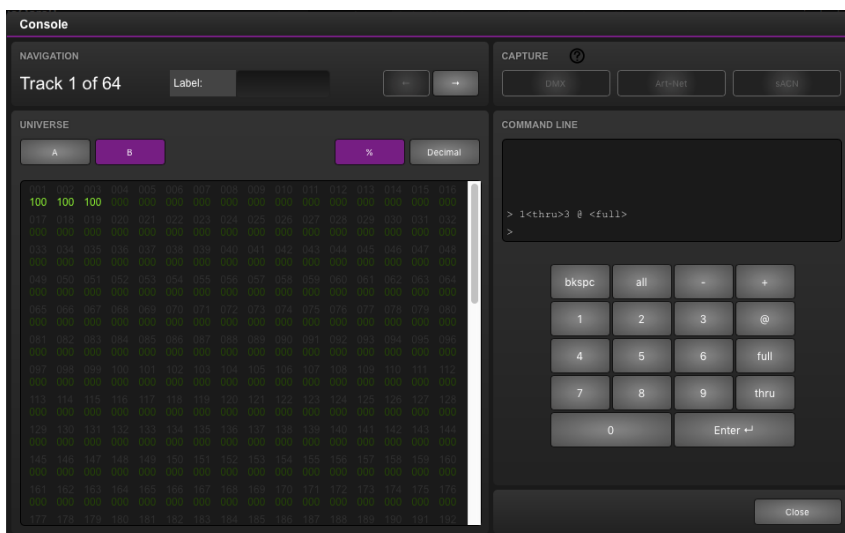


3. Open the web-interface

Choose the CueCore2 from the device list and click on the *Browse* button to open the web-interface.

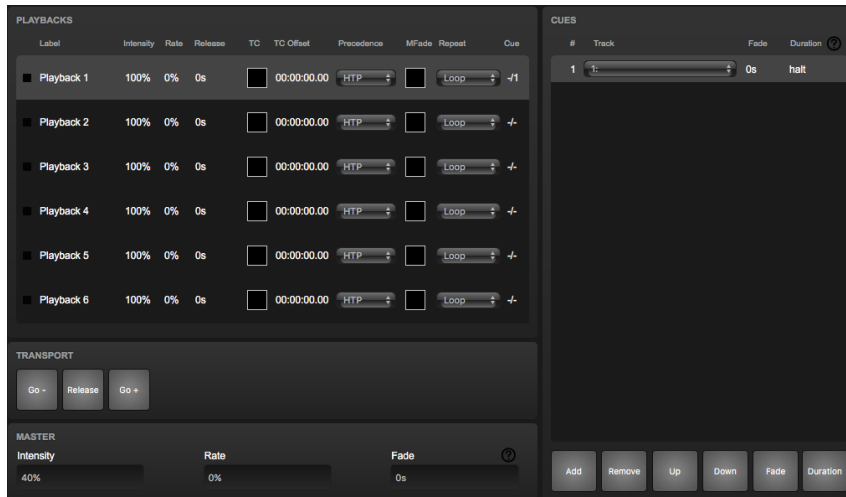
4. Create the scene

Use the browser to go to the CueCore2's 'Track' page. Select a track from the table and press the 'Open Console' button. Create a scene by using the command-line syntax. E.g. `1<thru>3 @ <full>`



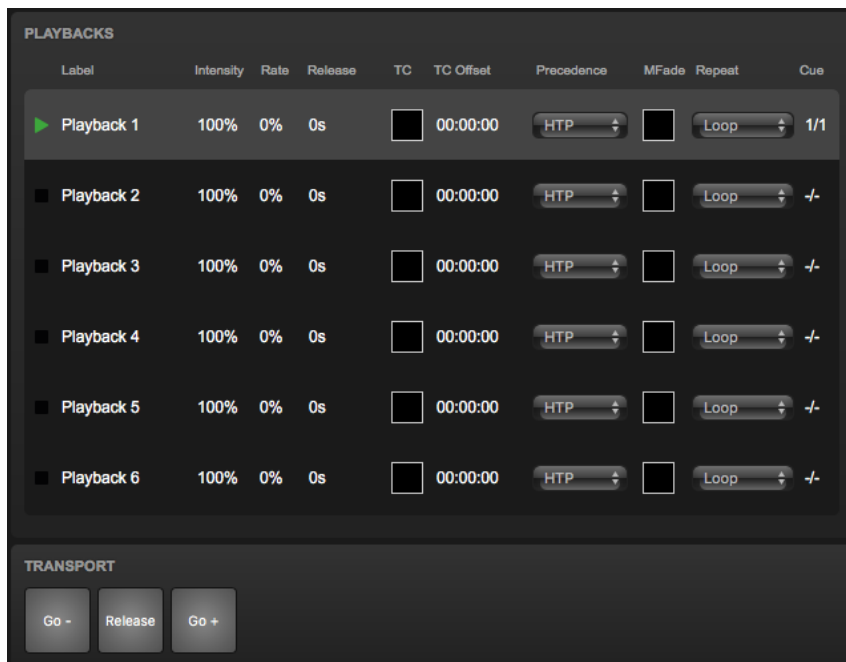
5. Create a cue

Go to the Playback page and select Playback 1. Press the Add button to create a new cue. Once the Cue is added it will automatically refer to Track 1.



6. Start playback

Press Go+ on the transport area to start the Playback. The playback now indicated the green 'play' icon.

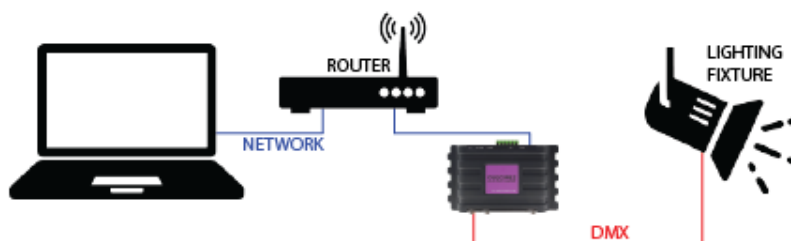


3.2 Choose scenes via UDP

This example will create two lighting scenes. They will be put into a single playback. This means only one scene will be active at a time. Furthermore, a cross-fade will be defined between the scenes and the scenes will be triggered by receiving simple UDP network messages. Please take the following steps:

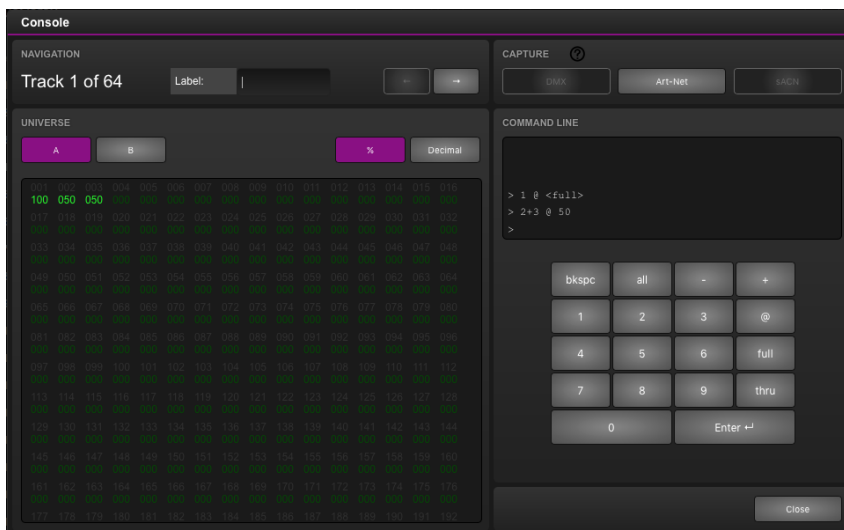
1. Connect to the network

Connect the CueCore2 with an Ethernet cable to the router. It is required that the network is managed by a router that features a DHCP server. If the network router is not DHCP capable then read the network chapter on page 33 for alternative setups.

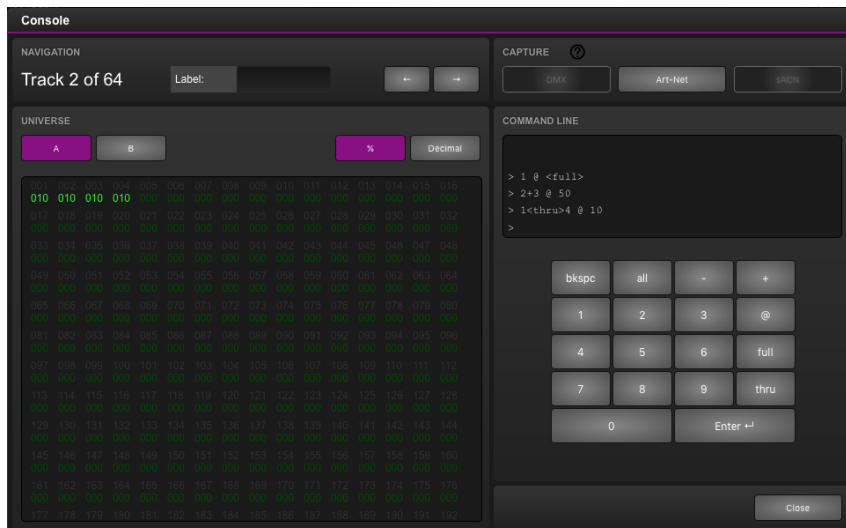


2. Create the first scene

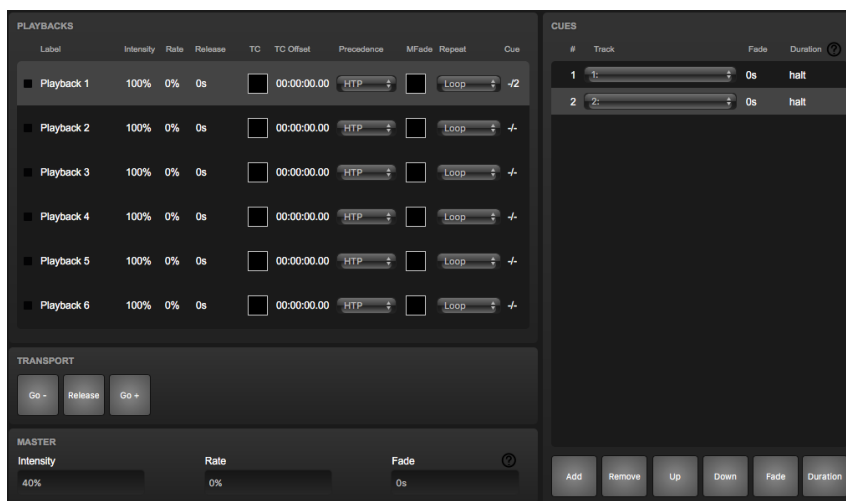
Use the browser to go to the CueCore2's 'Track' page. Select a track from the table and press the 'Open Console' button. Create a scene by using the command-line syntax. E.g. `1 @ <full>` or `2+3 @ 50 <enter>`



3. Create the second scene
Press the 'right arrow' button to switch to the next track. Again make a scene by using some command-line syntax; e.g. 1 THRU 4 @ 10 ENTER

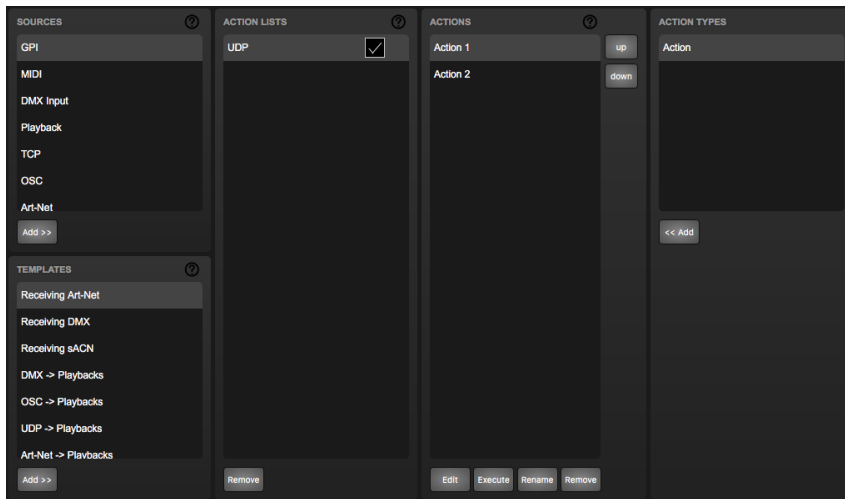


4. Program the playback
Go to the 'Playback' page, select the first of the six playback and insert two cues by pressing the 'add' button. Set cue #1 to refer to your first track and cue #2 to refer to your second track.



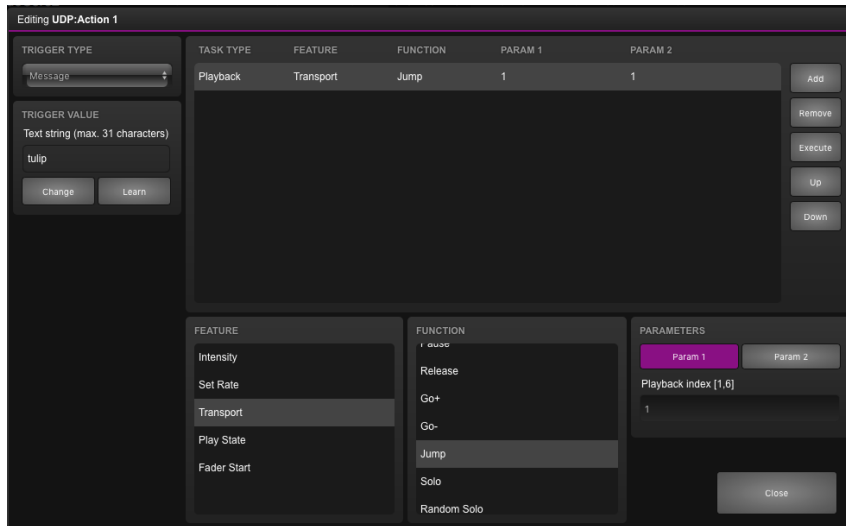
5. Create an action list

Go to the 'Show control' page. Select 'UDP' from the 'Sources' table. Copy UDP to the 'Action list' table by using the 'Add >>' button. Select the new UDP action list and insert two actions by pressing the '<< Add' button twice.



6. Create actions

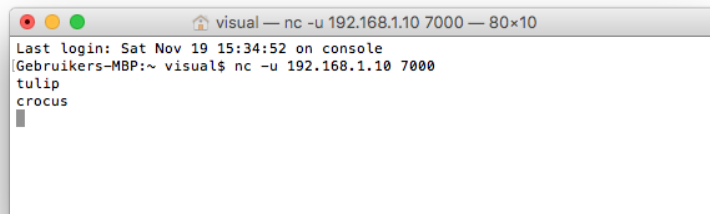
Select the first action and press 'Edit' to open the dialog. Change the trigger value to "tulip". Add one task by using the 'Add' button. Choose 'Playback' from the list of task types. Select the newly added task and set the 'feature' to 'Transport' and set the 'function' to 'Jump'. Parameter 1 should be set to '1' (addressing the first playback) and parameter 2 should be set to '1' (jump to the first cue).



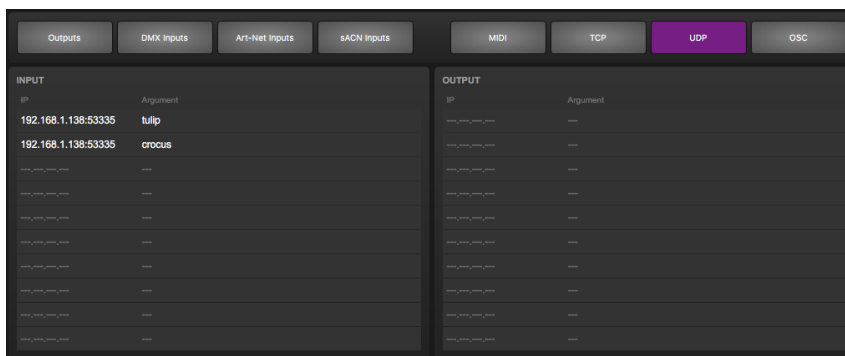
Press the 'Close' button, select the second action and press 'Edit' again. Change this trigger value to "crocus". Add a task by pressing 'Add' and choose the 'Playback' task-type. Select the newly added task and set the 'feature' to 'Transport' and set the 'function' to 'Jump'. Parameter 1 should be set to '1' (addressing the first playback) and parameter 2 should be set to '2' (jump to the second cue).

7. Test with netcat and monitor

On your computer, use a simple command-line tool like netcat to send a UDP string to the CueCore2. On Mac OSX netcat is started with the command `nc -u 192.168.1.10 7000` (replace 192.168.1.10 with IP address of your CueCore2). From now on you can type `tulip` <enter> or `crocus` <enter> to send this messages to the CueCore2.



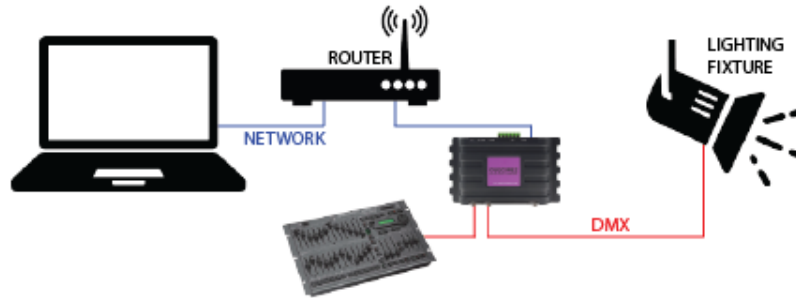
Go to the 'Monitor' page in your browser and select 'UDP In' to verify your device is receiving the UDP messages correctly. On the 'Playback' page you should see playback #1 respond to the incoming UDP commands by activating either cue #1 or cue #2.



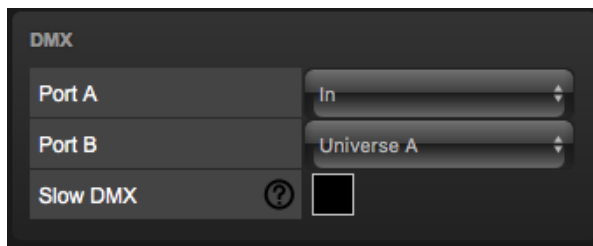
3.3 Record a show from an external DMX

The CueCore2 is capable of recording DMX data. This tutorial explains the required procedure.

1. Connect the external console
Connect the DMX output of the DMX console to *Port A* of the CueCore2.
Connect the fixtures to *Port B*.

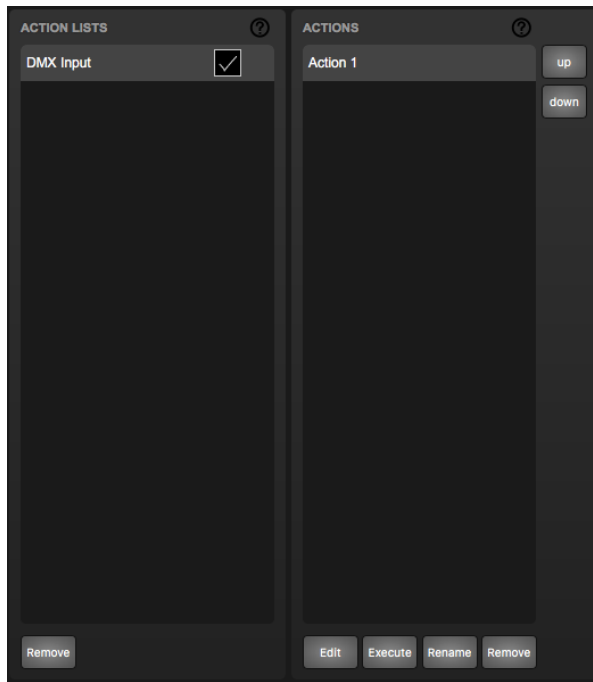


2. Configure port settings
Go to the *Settings* page and set DMX *Port A* to *In*. Set *Port B* to *Universe A*, it will now transmit DMX channels 1-512.

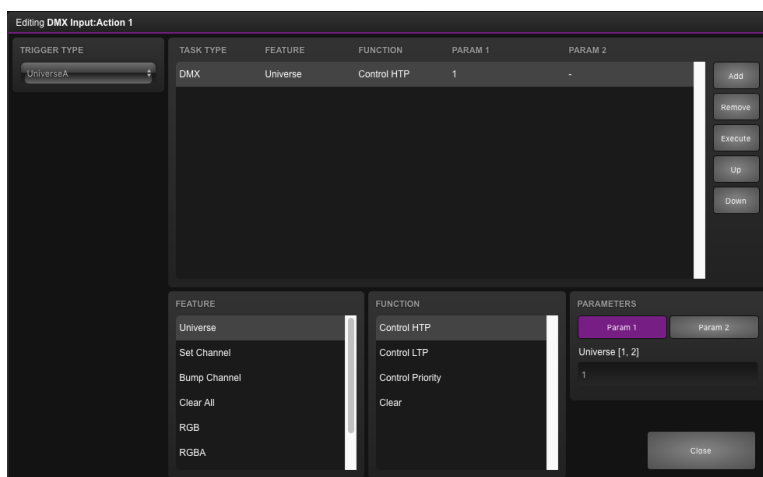


3. Throughput the DMX

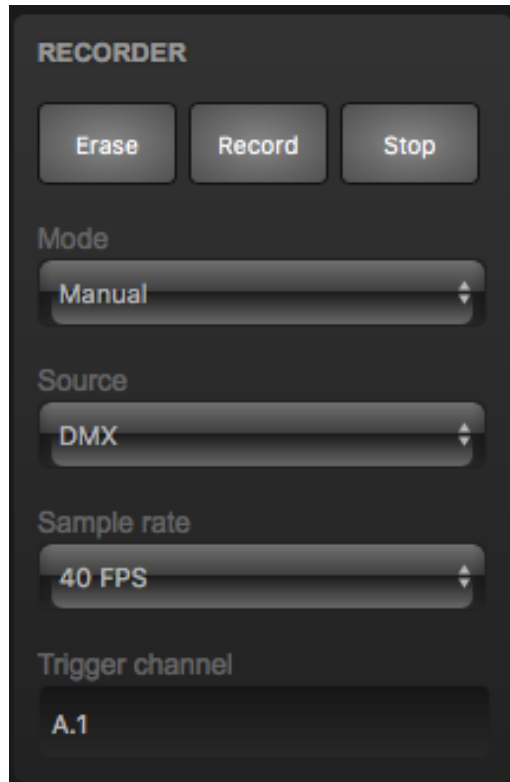
The DMX received by the CueCore2 will not automatically be output to the fixtures, however, it is desirable to see the console's output on the actual fixtures. To achieve throughput of the DMX, go to the *Show Control* page. Create a *DMX Input* action list and insert one action.



Edit the action. Set the *Trigger Type* to *UniverseA*. Add a *DMX* task and set its feature to *Universe* and its function to *Control HTP*, the first parameter should be set to 1.



4. Configure the recording
Go to the *Track* page. Select the first track and press the *Erase* button. Wait until the erase process is completed. Set *Mode* to *Manual*. Set *Source* to *DMX* and set *Sample rate* to 40 FPS.



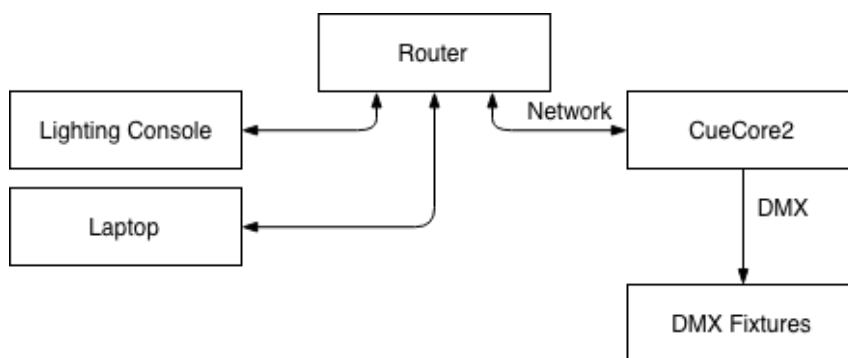
5. Record
Press the *Record* button at the begin of the console's show. Press the *Stop* button when the show is finished.
6. Test the result
Make sure the console outputs only zero values. Then playback the track's content by enabling the *Track Preview* checkbox.

3.4 Configure the device to be an Art-Net node

The CueCore2 is capable of sending and receiving various data protocols. This tutorial shows you how to receive Art-Net, and transmit the data through the DMX ports on the CueCore2.

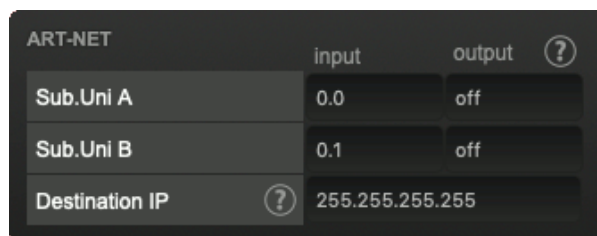
1. Connect to the network

Connect the CueCore2 with an Ethernet cable to the router. It is required that the network is managed by a router that features a DHCP server. If the network router is not DHCP capable then read the network chapter on page 33 for alternative setups.



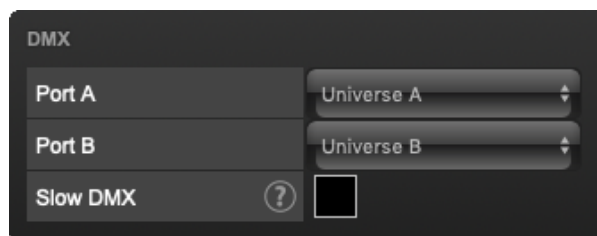
2. Configuring the Art-Net input

Go to the *Settings* page and set the desired Art-Net universes for port A and B at *Sub.Uni A* and *Sub.Uni B*. The CueCore2 counts the Art-Net universes from 0.0. For example, Art-Net universe 1 is at 0.0, Art-Net universe 16 is at 0.15 and Art-Net universe 17 is at 1.0. It is also possible to enter the Art-Net universe number (0, 16 or 17 for example) and the CueCore2 will automatically convert the value to a valid format.



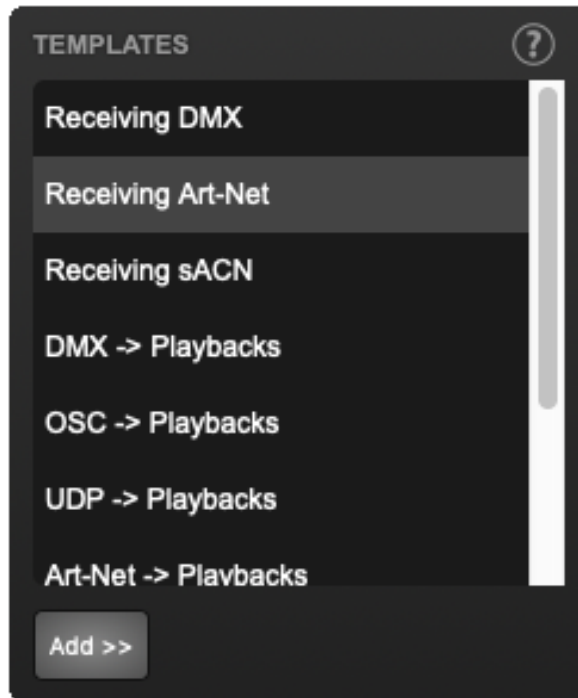
3. Configure port settings

Go to the *Settings* page and set DMX *Port A* to *Universe A* and *Port B* to *Universe B*.



4. Forwarding Art-Net to the DMX outputs

To forward the Art-Net values to the DMX ports, the *Receiving Art-Net* template can be used. Select it, and add it by clicking the *Add >>* button. The Art-Net input is now forwarded to the DMX output.



Chapter 4

Setting up

This chapter discusses how to set up the CueCore2.

4.1 Mounting

The device can be placed desktop or it can be DIN Rail mounted. The device is prepared for DIN Rail mounting by using the 'DIN rail holder TSH 35' from Bopla (Product no. 22035000).



Figure 4.1: Bopla DIN rail adapter

This adapter is - amongst others - available from:

- Farnell / Newark (order code 4189991)
- Conrad (order code 539775 - 89)
- Distrelec (order code 300060)

4.2 Rackmount

There is an adapter available for mounting the CueCore2 into a 19" rack . The rackmount adapter is 1 HE and is sold separately. It fits two units, however, it is supplied with one position closed by a blind panel, see figure 4.2.



Figure 4.2: Rackmount adapter

4.3 Kensington Lock

The device can be secured by using a Kensington style laptop lock.



Figure 4.3: Kensington lock

4.4 Power

The CueCore2 requires a DC power supply between 9 and 24 Volt with a minimum of 500mA. The 2,1 mm DC connector is center-positive. The CueCore2 is also Power-over-Ethernet (PoE) enabled. It requires PoE Class I.



Figure 4.4: DC polarity

Chapter 5

Network

The CueCore2 is a network capable device. A network connection between a computer and the unit is required to configure and program the CueCore2, however, once the device is programmed then it is not necessary anymore for the CueCore2 to be connected to an Ethernet network.

There are multiple arrangements possible for connecting the computer and the CueCore2. They can be connected peer-to-peer, via a network switch or via Wi-Fi. Figure 5.1 illustrates these different arrangements.

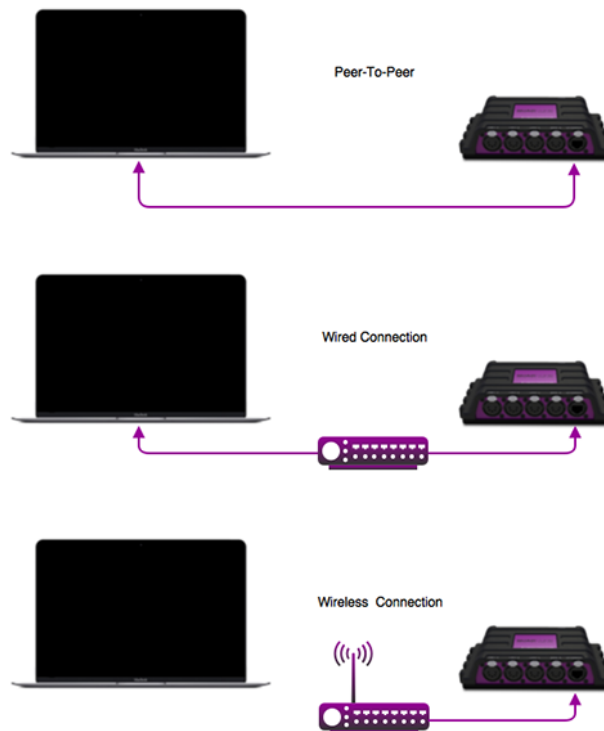


Figure 5.1: Network arrangements

The Ethernet port on the CueCore2 is auto-sensing; it does not matter whether a cross or straight network-cable is being used. Although the Ethernet port is classified as 100 Mbps, buffer limits may apply for specific tasks as API messages.

5.1 IP Address

The CueCore2 supports both static IP addresses and automatic IP addresses. By default, the CueCore2 is set DHCP in which it will be automatically assigned an IP address by the DHCP server in the network. The 'DHCP server' is typically part of the router's functionality.

Static IP addresses are useful when there is no DHCP server in the network, for instance when there is a direct peer-to-peer connection between a CueCore2 and a computer. It is also useful in permanent installations where the IP address of the CueCore2 is known by other equipment and therefore should not change. When using DHCP there is always the risk of automatically being given a new IP address in the event that the DHCP server is replaced. When using static IP addresses make sure that all equipment on the network have unique IP addresses.

The CueCore2's LED helps to determine which kind of IP address is set. The LED will indicate red when using DHCP and it will indicate white in the case of a static IP address.

There are three ways to change the IP address setting of the CueCore2.

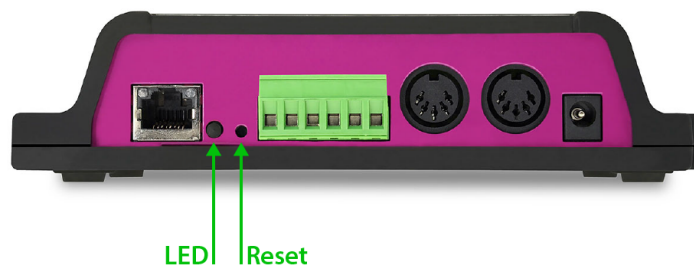


Figure 5.2: Reset button

- **vManager** can be used to detect a CueCore2 on the network. Once found, the vManager software (figure chapter 13) allows for changing the IP address, subnet mask and DHCP settings.
- If the IP address is already known then browsing to this address using the computer's browser will show the CueCore2's **web-interface**. The Settings page on this web-interface enables changing the IP address, subnet mask and DHCP settings.

- By briefly pressing the **reset button** on the device it toggles between static and automatic IP addresses. By pressing and holding the reset button (see figure 5.2) on the device for 3 seconds, it will reconfigure the unit to the factory default IP address and subnet mask. No other settings will be changed. The default IP address is 192.168.1.10 with the subnet mask set to 255.255.255.0.

5.2 Web-interface

The CueCore2 features an inbuilt web-server. This web-interface can be accessed via a standard browser. It is recommended to use any of the following browsers:

- Microsoft Edge
- Google Chrome (v59 or higher)
- Apple Safari (v10 or higher)
- Mozilla Firefox (v54 or higher)

The web-interface enables you to configure and program the CueCore2. When browsing to the unit the home page (figure 5.3) will appear first. The home page is read-only; it provides information but does not allow for changing any setting. The other pages present many settings that can be edited. These pages will be discussed in the subsequent chapters.

| GENERAL | | NETWORK | |
|------------------|-----------|-------------|-------------------|
| Serial Number | 201722001 | MAC address | B8:D8:12:80:12:33 |
| PCB version | 2.6 | IP address | 192.168.1.19 |
| Firmware version | 1.22 | Subnet mask | 255.255.255.0 |
| Label | MyCueCore | Router | 192.168.1.254 |
| Uptime | 00:11:42 | Master IP | - |

| TIME | | PLAYBACKS | | | | | |
|------------------|---------------------|------------|-----------|------|---------|------------|-----|
| Date | 2017-10-11 | Label | Intensity | Rate | Release | Precedence | Cue |
| Time | 07:29:04 | Playback 1 | 100% | 0% | 0s | HTP | -5 |
| Last Server Poll | 2017-10-11 07:17:55 | Playback 2 | 100% | 0% | 0s | HTP | -5 |
| Timer 1 | 00:00:00 | Playback 3 | 100% | 0% | 0s | HTP | -5 |
| Timer 2 | 00:00:00 | Playback 4 | 100% | 0% | 0s | HTP | -5 |
| Timer 3 | 00:00:00 | Playback 5 | 100% | 0% | 0s | HTP | -4 |
| Timer 4 | 00:00:00 | Playback 6 | 100% | 0% | 0s | HTP | - |

| TIMECODE | | | RECEIVING | | | |
|----------|-------------|------------|-----------|----|---------|----|
| Internal | Frame | Frame rate | DMX A | | Art-Net | no |
| SMPTE | 00:00:00.00 | 30 FPS | DMX B | - | eACN | no |
| MTC | 00:00:00.00 | - | MIDI | no | TCP | no |
| Art-Net | 00:00:00.00 | - | | | UDP | no |
| | | | | | OSC | no |

| | | | | |
|------------------|-----------------------------|---------------|-----------|--|
| LABEL: MyCueCore | OPERATING MODE: Stand Alone | RTC: 07:29:04 | GPI: 0000 | RX: DMX MIDI MMC MSC ART eACN TCP UDP OSC TIMECODE |
|------------------|-----------------------------|---------------|-----------|--|

Figure 5.3: Home page

5.2.1 Uptime

This field indicates how long the unit has been alive since its last reboot.

5.2.2 Last Server Poll

Indicates the last time the time & date was fetched from a NTP time server.

5.2.3 Master IP

When the unit is not in Stand Alone mode, then this field displays the IP number of system that is mastering the CueCore2. Refer to chapter 6 for more information on operating modes.

5.3 Access via Internet

The CueCore2 can be accessed through the Internet. There are two ways to achieve this: Port Forwarding and VPN.

- **Port Forwarding** Is relatively easy to setup in the router. Each router is different so it is advised to consult the router's documentation (sometimes it is referred to as NAT or Port-Redirecting). Please note that port forwarding is not secure, since anybody could access the CueCore2 this way.
- Accessing via a **Virtual Private Network** (VPN) tunnel requires more setup efforts, also the router needs to support the VPN feature. Once set up, this is a very secure way to communicate with the CueCore2. A VPN is a network technology that creates a secure network connection over a public network such as the Internet or a private network owned by a service provider. Large corporations, educational institutions, and government agencies use VPN technology to enable remote users to securely connect to a private network. For further information about VPN please refer to <http://whatismyipaddress.com/vpn>.

Chapter 6

Operating Modes

A CueCore2 can operate in three modes, each mode resulting in a different behaviour of the device.

- Stand-alone
- Slave
- CueluxPro

By default the CueCore2 operates in the Stand-alone mode.

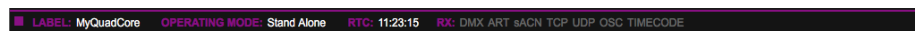


Figure 6.1: Status bar

The status bar at the bottom of the web-interface (figure 6.1) indicates the current operating mode. When mastered by CueluxPro the home page of the web-interface show the IP address of the CueluxPro system (figure 6.2).

| NETWORK | |
|-------------|---------------------|
| MAC address | B8:D8:12:80:04:90 |
| IP address | 192.168.1.15 |
| Subnet mask | 255.255.255.0 |
| Router | 192.168.1.254 |
| Master IP | 192.168.1.144:50175 |

Figure 6.2: Master IP

6.1 Stand-alone mode

In this mode the CueCore2 is an autonomous device for controlling lighting. Typically it is loaded with lighting content and programmed to respond to external triggers and/or internal scheduling. This is the default behaviour of a CueCore2; the stand-alone mode is active whenever the CueCore2 is not in the slave or CueluxPro mode.

6.2 Slave Mode

Some demanding lighting designs can require more than two universes of DMX. When multiple CueCore2 units are combined to create a large multi-universe system there is the need for synchronisation of those CueCore2 devices. The Slave mode facilitates this. See figure 6.3.

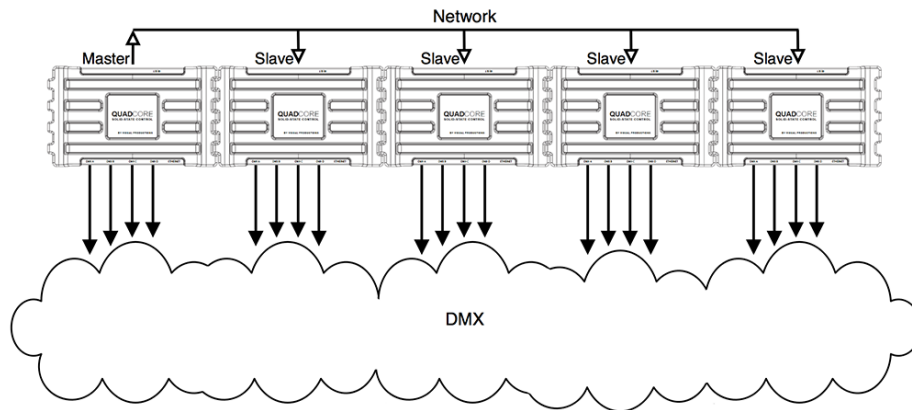


Figure 6.3: Master/Slave setup

When in Slave mode the CueCore2 is taken over by a master-CueCore2 and is no longer responsible for its playbacks and scheduling; the master takes care of this. All the slave requires is to contain the lighting content in its tracks. The master-CueCore2 will control all its slaves to activate the same tracks and keep the playback of those tracks synchronised.

It is necessary to put all action-programming in the master-CueCore2. In fact, the playback information inside the slaves will be overwritten by the master. The master does this because it stores a copy of its playback-data in each slave to enable the slave to continue autonomously in case the communication between master and slave is interrupted.

The logical place for the action lists and action for a master/slave system is also inside the master, however, it is allowed to place actions in a slave and they will get executed.

The Slave mode is enabled in the Settings page (See chapter 12, page 71). Once enabled, the Slave mode is entered as soon as the master connects to the slave. The Slave mode reverts back to the Stand-alone mode when the master disconnects or when the slave disables Master/Slave in the Settings page.

6.3 CueluxPro Mode

CueluxPro (see figure 6.4) is a software-based lighting console that is bundled with the CueCore2. The purpose of the CueCore2 in this mode is to be an

interface between CueluxPro and the DMX lighting fixtures. Therefore the CueCore2 will forward the data received from the CueluxPro software to its DMX outlets. During this mode all internal playback and scheduling within the CueCore2 is suspended. Figure 6.5 illustrates a typical CueluxPro/CueCore2 system.



Figure 6.4: CueluxPro

The CueCore2 enters the CueluxPro mode as soon as it is patched to one or more universes within the CueluxPro software. This mode is exited by un-patching the CueCore2 or closing down the CueluxPro software.

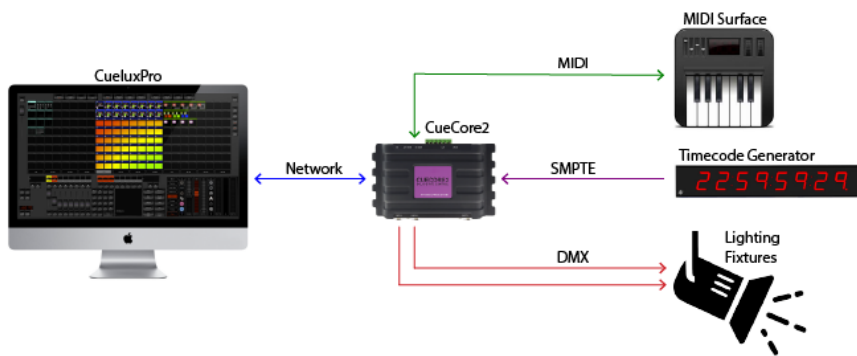


Figure 6.5: A typical CueluxPro system

Using the CueluxPro software in combination with the CueCore2 results in a lighting control system with a larger feature set than using the CueCore2 on its own in the stand-alone mode. CueluxPro features:

- Personality library with 3000+ fixtures
- FX Generator

- Matrix Pixel-mapping
- Groups
- Palettes
- Timeline editor

CueluxPro can also be used for generating the lighting content that can be uploaded to the CueCore2. After uploading, the CueCore2 can continue to be used stand-alone. For information on how to use CueluxPro please refer to the CueluxPro manual on the Visual Productions website. This manual provides instructions for connecting to CueluxPro and uploading content to the CueCore2.

Chapter 7

Tracks

A Track is a piece of lighting content that can be activated by a playbacks. Tracks can contain dynamic lighting effects; each track can be a 'DMX recording' with a certain duration. Of course a static scene can also be stored in a track.

There are three different ways to put the content inside the track. The 'Console' page allows the user to create and edit a static scene directly via the web-interface. This page also is capable of recording a static scene from an external DMX, Art-Net or sACN source. The Console page is discussed in detail on page 42.

The second way for storing content into the tracks is done via the 'Recorder' section; this section of the Tracks page contains control for recording dynamic DMX content from external DMX, Art-Net and sACN sources.

Furthermore, it is also possible to create the lighting content using the CueluxPro software and upload it to the CueCore2. This can be dynamic as well as static content. For more information on CueluxPro see chapter 6, page 37.

7.1 Number of Tracks

The CueCore2 has a fixed memory chip onboard. This memory chip is divided into a number of equally sized slots called 'Tracks'. Go to the Settings page to choose the amount of slots the memory chip is divided into. The CueCore2 offers a choice of 1, 2, 4, 8, 16, 32, 64 or 128 tracks. More tracks will result in a smaller memory size per track.

Once the number of tracks has been set, the content of the tracks must be erased. It is recommended to choose how many tracks will be used before filling them with content.

Warning: Changing the number of tracks will result in loosing the current content of the tracks.

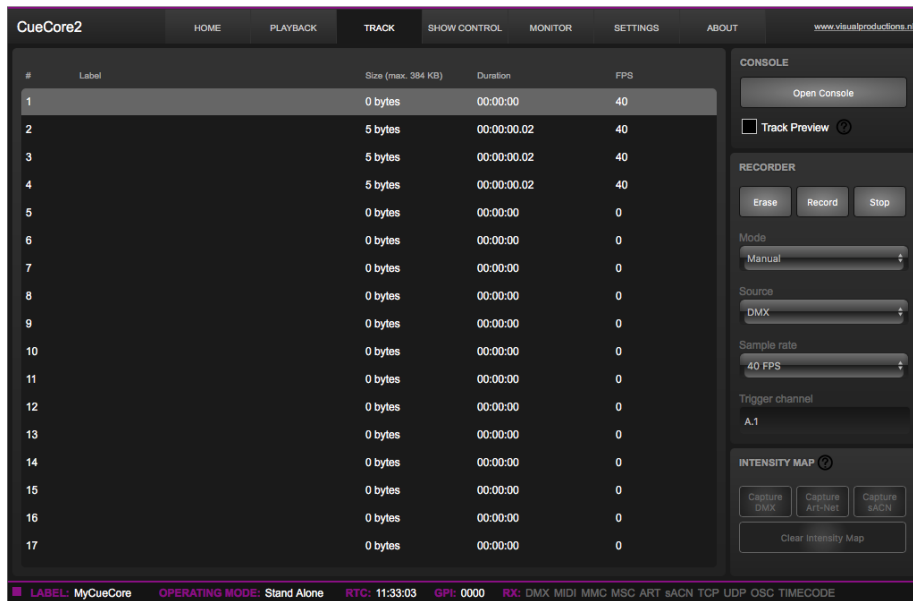


Figure 7.1: Tracks

7.2 Track Properties

The Track listing (See figure 7.1) displays the following track properties:

| | |
|----------|---|
| Label | The name of the track; this field can be changed by double-clicking. |
| Size | The number of bytes used by the data inside the track. The maximum size is indicated at the top of this column. This maximum depends on the 'number of tracks' selected in the Settings page. |
| Duration | The length of the track displayed in hours:minutes:seconds.milliseconds. |
| FPS | The sample rate of the track displayed in Frames Per Second (FPS). The sample rate has been chosen during the recording process and cannot be altered afterwards. |

7.3 Console

The Console page (see figure 7.2) allows to edit a track directly through the web-interface, however, a track does need to be a static scene; it should only contain a single DMX frame. If the track already contains more than one DMX frames and thus it is a dynamic track, then it can be made static by erasing it. The track can be edited by selecting the track in the table and then pressing the 'Open Console' button. This will automatically enable the 'Track Preview' checkbox so the content that is being edited in the Console page is also out-

putted live.

The 'Track Preview' is a useful option to briefly test the content stored in a track without having to configure a playback for it. Please note that any active playback will be released when the Track Preview is enabled.

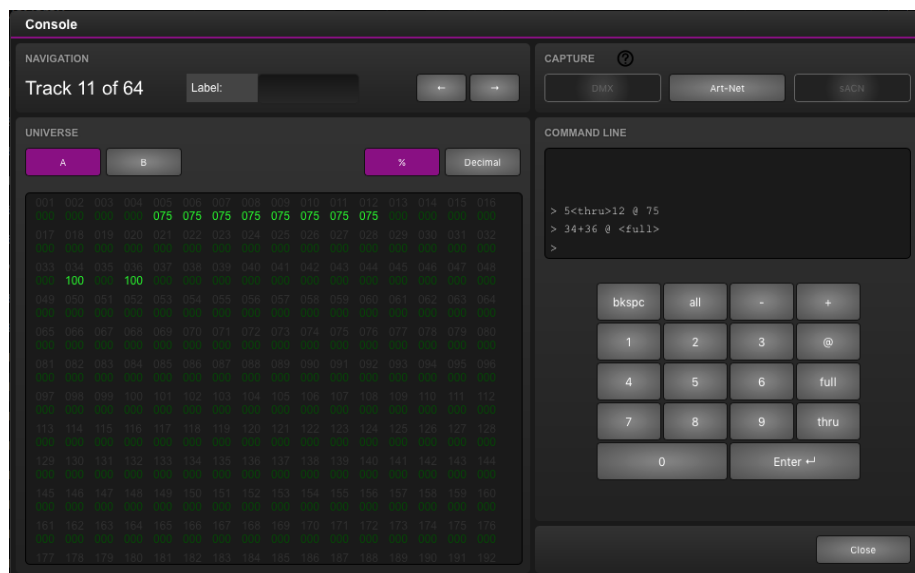


Figure 7.2: Console page

Inside the Console page the DMX values of the track can be changed by using the Command-line interface. The following table offers examples of the supported commands.

| Command | Function |
|------------------------|--|
| 1 @ 50 ENTER | Sets channel 1 at 50% |
| 1 + 2 @ FULL | Sets channel 1 and 2 at 100% |
| 1 THRU 3 @ 0 | Sets channels 1 through 3 at 0% |
| 1 THRU 3 + 5 @ 0 ENTER | Sets channels 1, 2, 3, and 5 at 0% |
| ALL @ 100 ENTER | Sets all channels in the selected universe at 100% |
| 1 @ + 10 ENTER | Increases channel 1 value with 10% |
| ALL @ - 20 ENTER | Decreases all channels in the selected universe by 20% |

By default the Console page presents the DMX values in percentage (%). When the representation is switched to decimal (by using the 'Decimal' button) then the values in the table above would be interpreted as decimal values as well. E.g. 1 @ 50 ENTER would set the channel at decimal value 50 which relates to

20%.

Instead of setting the values manually, the Console page also offers to record the entire scene from an external DMX, Art-Net or sACN source. The buttons in the Capture section become available when the CueCore2 is receiving the signal of the corresponding protocol. I.e. that the 'DMX' button is disabled unless the unit is receiving actual DMX. Please be aware that - once enabled - pressing one of the capture buttons will overwrite the current channel levels in all universes.

7.4 Recorder

The Recorder section is used to capture dynamic content from an external source and store it inside a track. In order to be stored in flash memory, a track requires to be erased first. It is advised to manually erase the track before starting a record. This is done by selecting it in the table and then pressing the 'Erase' button. In case a non-erased track will be directly recorded then the CueCore2 will automatically first erase the track, however, this gives less control over the timing of the start of the recording, especially in the Manual mode.

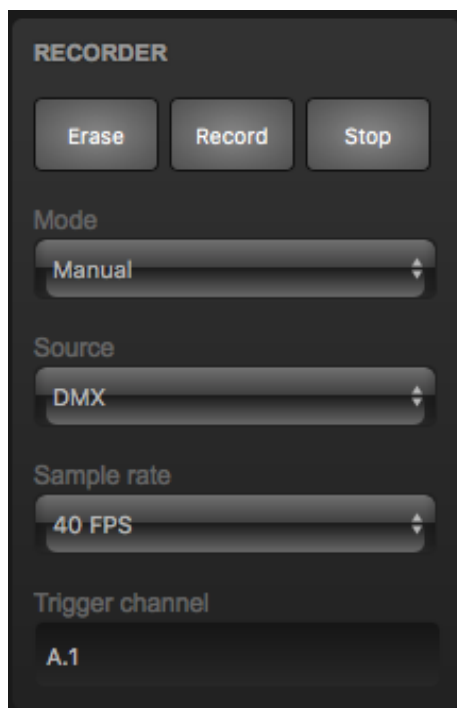


Figure 7.3: Recorder section

The icons in the track table visualise the different states of the recorder. The 'trash icon' indicates a track is being erased. The 'orange dot' signifies a track being ready to start recording, this corresponds to the Triggered or Timecode

mode. A 'red dot' indicates a recording in progress.

7.4.1 Mode

The triggering modes define how the recorder is initiated. There are three different modes.

- The most simple mode is **Manual**. In this mode the user has to manually press the 'Record' button to start and press the 'Stop' button to end the recording. Although simple to operate, this mode does not give accurate control over the timing of the begin and end of the recording. Both human interaction and operation through a web-based user-interface will introduce some degree of lag.
- An automated way of starting and stopping the recording process is done in the **Triggered** mode. One of the data channels is allocated to control the start/stop. The channel address is denoted by the 'Trigger Channel' field. It is advised to include this channel in the show programming done on the external source; a typical lighting console allows accurate timing of DMX channels which gives fine control over when the recording starts and ends in relationship to the show content. When using the Triggered mode pressing the 'Record' button will prepare the track for recording; it will be erased when necessary and then stay idle in anticipation of the trigger channel going high to indicate 'start'. The recording is ended by setting the trigger channel to 0%.
- The **Timecode** mode allows for the recording process to be synchronised by incoming timecode. Pressing the 'Record' button will prepare the track for recording; it will be erased when necessary and then stay idle in anticipation of the timecode to start running, it stops when the timecode resets back to 00:00:00.00. Always record from frame 00:00:00.00. If the content is supposed to run at a different frame then use the playback's 'TC offset' property to achieve that.

A typical challenge with recording dynamic DMX data is to create a seamless loop. Often the manual mode will most likely not be sufficiently accurate to achieve a seamless loop. The triggered mode offers a way to remote control and make the recording seamless. Alternatively, the lighting content can be designed in CueluxPro instead of recording from an external source, as CueluxPro automatically takes care of making its content seamless.

7.4.2 Sources

The CueCore2 is capable of recording DMX data from an external source by using three different protocols:

- DMX
- Art-Net
- sACN

Please consider that the operation of these protocols depend on their properties the Settings page.

7.4.3 Sample Rate

The Sample Rate setting will determine how many samples of the data are taken per second and stored in memory. This setting variants are 5, 10, 30 and 40 Frames Per Second (FPS). 40 FPS gives maximum quality in terms of smooth dimming curves. 5 FPS is a low value but useful for slow DMX changes and consumes much less memory. The 40 FPS setting is recommended unless there is a reason to reduce the sample rate.

7.4.4 XLR Adapter

The DMX ports on the CueCore2 are mainly used for outputting DMX and therefor are fitted with female XLR connectors. When using the ports as an input it is likely that the XLR needs to 'gender change' into a male connector. Neutrik offers the NA5MM (figure 7.4), a 5-pin XLR male-to-male adapter for this purpose.



Figure 7.4: Neutrik NA5MM

7.5 Track Capacity

The CueCore2 has 32MB memory, of which 24MB is reserved for the tracks. The device uses a compression algorithm to store the data and optimise the storage for best use. The duration of the recording that the track can hold depends on several parameters: number of tracks, dynamic lighting content and the number of DMX channels used. Therefor the maximum duration is hard to specify, however, some guidance can be provided:

In a typical scenario where 32 moving heads - together consuming 512 channels - are constantly changing their primary attributes (position, shutter, colour & gobo) then the memory will hold approx. 16 minutes per track in a 8-track setup. In a 32-track it will hold 3 minutes per track. Both examples are recording at 40 FPS.

In a worst-case scenario with 1,024 channels actively changing to random values (pixel-mapping content) then a 1-track setup will hold approx. 13 minutes, a 16-track setup will hold 48 seconds per track. Both examples are recording at 40 FPS.

If the limits of the capacity are reached then there are three different ways to help overcome this.

- Reduce the 'number of tracks' in the settings page. Note that the current track content is lost when changing this setting.
- Reduce the sample rate.
- Spread the content over multiple tracks. They can be linked together later on the Playback page (For more information go to chapter Playbacks, page 20). This way cross-fades can be generated by the CueCore2 instead of being recorded.

7.6 Intensity map

Typically, a DMX recorder stores the values of the channels without knowing its functions. When reducing the output level at the Playback all channels are reduced, also the ones that contain information other than intensity/dimmer levels. This has the undesired effect that RGB or Pan Tilt channels are also affected, whereas ideally only the intensity levels should be lowered. This is a challenge all DMX recorders have. The intensity map (figure 7.5) overcomes this issue by specifying to the CueCore2 which channels control intensity.

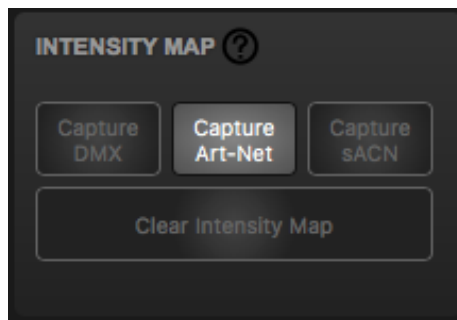


Figure 7.5: Intensity Map section

To set up the Intensity Map follow steps below:

1. Connect an external lighting console via DMX, Art-Net or sACN.
2. Create a scene in which intensity channels are set to 100%. In case of 16-bit dimming, the coarse (or MSB) channels are set to 100% and the Fine (or LSB) channels are set to 50%. All other channels go to 0%.
3. Press the 'Capture' button.

The recording of this lighting scene is now saved in the Intensity Map.

The capture buttons remain disabled while the CueCore2 is not receiving the actual signal from the corresponding protocol. The 'Clear Intensity Map' button is

only enabled when there is an intensity map present; a disabled 'Clear Intensity Map' button is an indication that there is no map stored in the memory.

Chapter 8

Playbacks

A playback is capable of activating the lighting content stored in the tracks. Tracks are merely storage for lighting scenes and effects; the playbacks actually plays them. The playbacks are located in the Playback page in the web-interface, see figure 8.1.

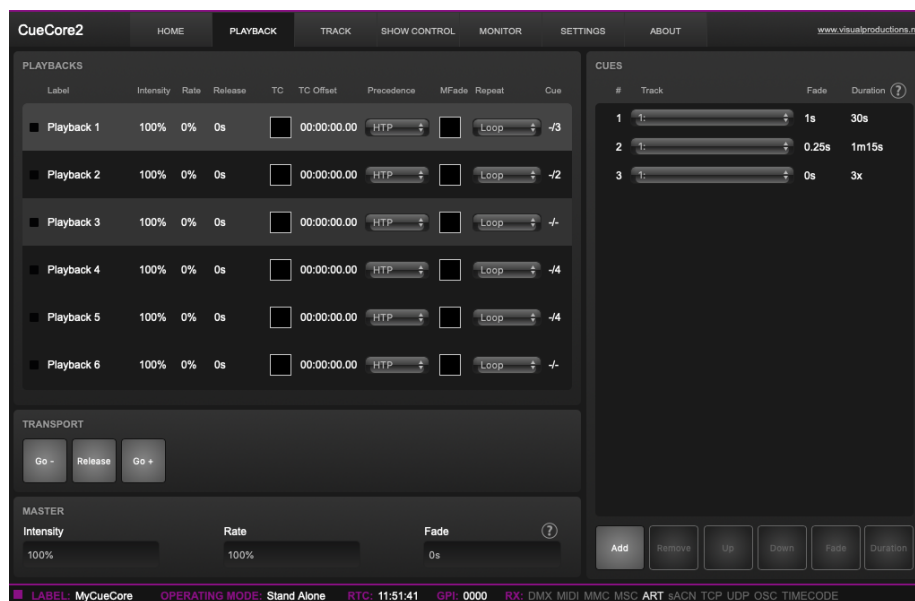


Figure 8.1: Playback page

There are 6 playbacks available. Each can contain up to 32 steps, called 'cues'. A cue will contain a reference to a track plus additional information such as fade-time and duration. Figure 8.2 illustrates the structure of a playback.

Playbacks can be run independently of each other; they can all start or stop at different times. It is possible to control the same DMX channels from multiple playbacks and have them merged together. Also, it is possible to have each playback control a different set of DMX channels; making each playback responsible

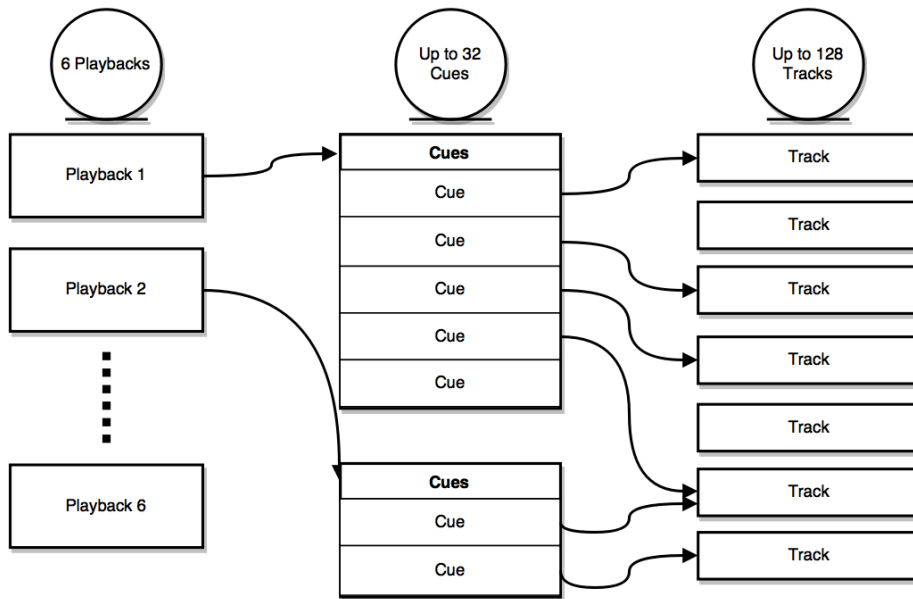


Figure 8.2: Playback structure

for a different zone. Figure 8.3 shows an example of controlling multiple zones in a hypothetical restaurant.

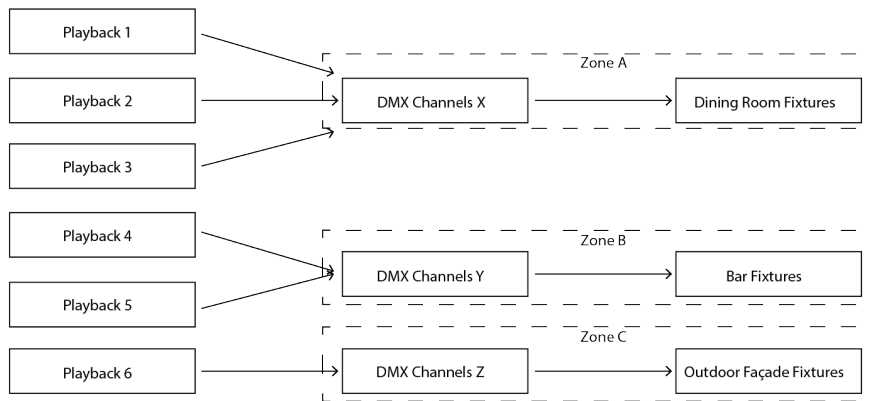


Figure 8.3: Playbacks controlling zones in a restaurant

8.1 Precedence

All active Playbacks produce DMX values. These values will be merged together and sent to the DMX output. The precedence setting determines how this merging is done. Each playback can be set to either HTP (Highest Takes Precedence), LTP (Latest Takes Precedence) or Priority.

HTP is the most common choice in precedence. With HTP the output of all playbacks is compared to each other; for each DMX channel the level is set to the highest value found in that particular channel amongst all playbacks. The table below shows an example of HTP merging.

| | Playback 1 | Playback 2 | Playback 3 | Merged Output |
|-----------|------------|------------|------------|---------------|
| Channel 1 | 0% | 0% | 25% | 25% |
| Channel 2 | 100% | 0% | 25% | 100% |
| Channel 3 | 0% | 0% | 0% | 0% |
| Channel 4 | 0% | 100% | 25% | 100% |

In the LTP approach only one playback is active amongst all LTP playbacks. The output of that active playback is included in the merge with all HTP playbacks. All other LTP playbacks are ignored. Which LTP playback is active is determined by which playback is started latest, or which received a Go+ command latest. Please consider figure 8.4.

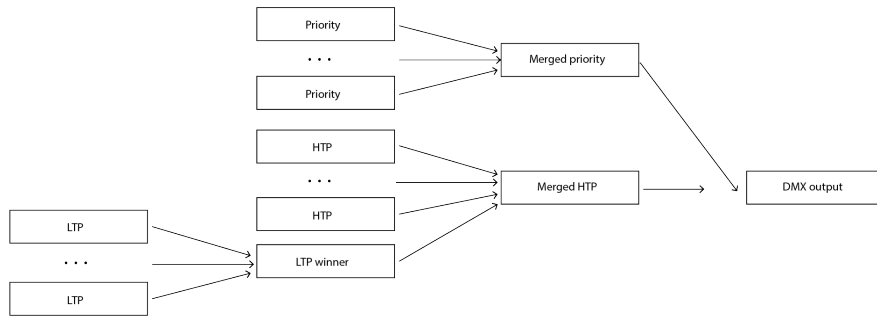


Figure 8.4: Playback precedence

If there is a playback active with its precedence set to Priority then all other playbacks are ignored. When there are multiple Priority playback then those will be merged together according to the HTP principle.

8.2 Playback Properties

Each playback provides a set of properties that can be used to customise the playback's behaviour. Some properties are changed by double-click.

| | |
|------------|--|
| Label | The name of the playback. |
| Intensity | The output level of the playback. |
| Rate | The speed of the playback. By default, it is set to 0%. It can go up to 100% (faster) and down to -100% (slower). |
| Release | When released the playback can fade out to zero. This release time defines how long this fade out will take. Setting it to 0s will result in an instant release. |
| TC | When enabled, the playback is synchronised to the current timecode (TC). By default, TC is disabled. Note that the Settings page provides a field for selecting the timecode protocol, e.g. 'internal' or 'Art-Net'. |
| TC Offset | Specifies at which timecode frame the playback starts. |
| Precedence | Determines how the output of the playbacks is merged together, as explained on page 50. |
| MFade | Normally the fade time between cues is determined by the 'fade' field in the cue properties. When Mfade is enabled then the playback will ignore the cue's fade times and use the master fade time for all its cues. |
| Repeat | This property determines what the playback does when it finishes the last cue. Loop: Will start over from the beginning. Bounce: Will make it traverse back to the beginning, and it will keep going back and forth. Random: The order of the cues will be random. Off: The Playback will automatically release when reaching the end of the cues. |
| Cue | Current/Total of Cues. Indicates which cue is currently active and indicates the total number of cues in the Playback. |

The intensity and rate properties are not stored in the CueCore2's internal flash memory. It is expected that these properties can change often during the operation of the CueCore2 and could consequently wear out the flash memory.

A consequence of not storing these properties is that after a power cycle their levels will be reverted to the default values. If the intensity or rate requires to be permanently set to a value other than the default value then it is recommended to use the Show Control page and create an action in the 'System' action list. This action can have its trigger set to 'Startup' and contain tasks to set the playback's intensity and rate to the desired values.

8.3 Cue

A cue is a step inside a playback. A playback can contain up to 32 cues. A cue does not contain a lighting scene, rather, it refers to a track which does contain the lighting scenes. It is possible for multiple cues to refer to the same track. The cue does contain information on how long the lighting scene should

be played and if it should be cross-faded from the previous cue.



Figure 8.5: Cues

Each cue provides the following properties:

| | |
|----------|--|
| Track | A reference to the track that will be played in this step. |
| Fade | The cue will fade from the current levels to its programmed levels. The time it takes to cross-fade is specified by 'Fade'. When the fade is set to 0 then there will be no cross-fade; the values will change instantly. |
| Duration | Determines how long the cue will be active before traversing to the next cue. This is the time between the completion of the cross-fade into this cue and the start of the cross-fade to the next cue. The duration field accept not only 'time' input such as ".5" "30s" or "1m15", it also accepts 'number of cycles'; the playback can run the cue "1x" or "10x". This is particularly useful when the track referred to by the cue contains a (seamless-)looped effect. Please note that if the track contains a static scene; i.e. the track only holds a single DMX frame, then running it for a number of cycles will create a very short cue as a single DMX frame only takes 25ms. The third option for the duration field is to input "halt". In this case the cue will continue to run indefinitely; it requires a Go+, Go-, Jump or Release command to traverse to the next cue. |

The Playback page provides the following buttons to edit the cues:

- Add: Will add a new empty cue.
- Remove: Will remove the selected cue
- Up: Will move the selected cue up a position.
- Down: Will move a selected cue down a position.
- Fade: Will open a pop-up window where you can set the fade time.
- Duration: Will open a pop-up window where you can set the duration.

8.4 Transport

The transport section offers buttons to control the playbacks.

| | |
|---------|---|
| Go+ | Jump to the next cue. |
| Go- | Jump to the previous cue. |
| Release | Deactivates the selected playback. Press and hold to release all playbacks. |

8.5 Master

The master section provides features that are applied to all playbacks.

| | |
|-----------|--|
| Intensity | The master intensity works like a theatrical 'grand master'; it dims the output of all playbacks taking their individual intensity setting into account. |
| Rate | The master rate will control the play speed of all playbacks; with taking their individual rate settings into account. |
| Fade | The master fade time overrides the fade time of all cues. This only applies to playbacks that have 'MFade' enabled. |

Similar to some of the playback properties, the master properties are not stored in the internal flash memory. Please refer to the discussion on page 52.

Chapter 9

Show Control

The CueCore2 can interact with the outside world; it can receive messages and values through various protocols and it can send out many protocols. It is possible to automate the CueCore2 by having it respond automatically to incoming signals. An example of this would be to start a playback upon receiving a specific UDP network message. The Show Control page (See figure 9.1) enables this kind of programming to be made.

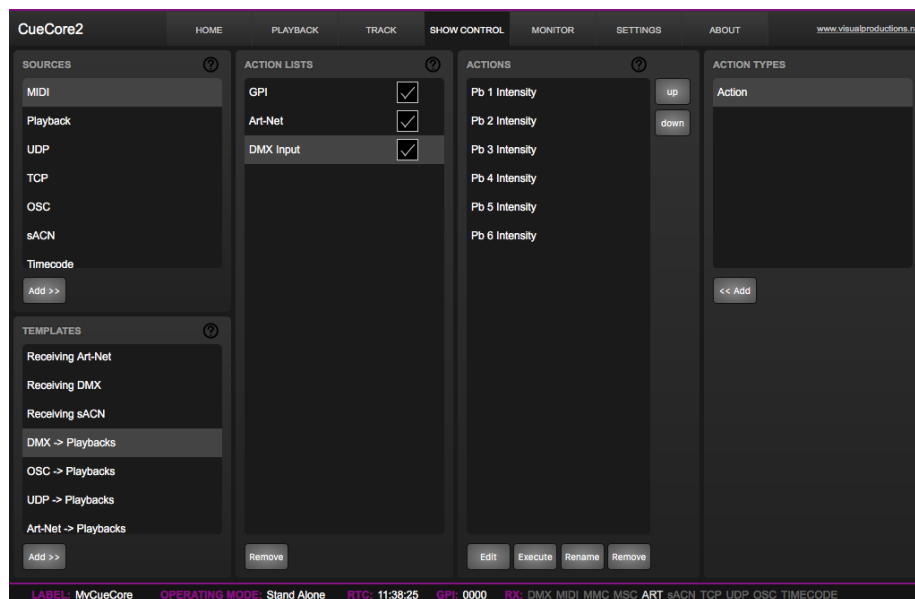


Figure 9.1: Show Control page

The Show Control page presents a system of 'actions'. A signal that the CueCore2 needs to respond to or perhaps convert into some other signal, needs to be expressed in an action. Before programming actions please consider the Show Control structure in figure 9.2.

The CueCore2 is capable of listening to various protocols. These available pro-

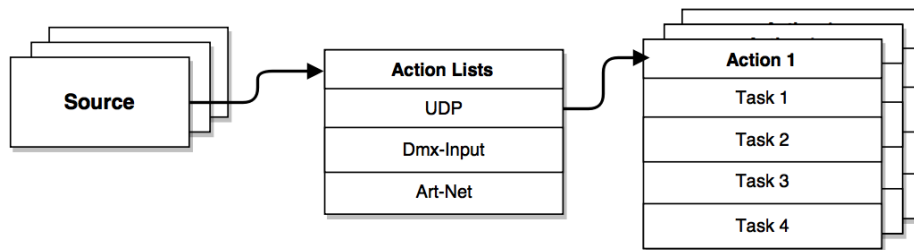


Figure 9.2: Show Control structure

protocols are listed in Sources, however, the CueCore2 can only actively listen to 8 protocols at once. The active protocols are listed in 'Action Lists'. Each action list can contain actions. Within a protocol/source each individual signal requires its own action. For example, when listening to channel 1 and 2 on the incoming DMX, the DMX action list needs two actions; one for each channel.

Inside the action we define the trigger and tasks. The trigger specifies for which signal to filter. In the above DMX example the trigger would be set to 'channel 1' and 'channel 2' respectively. The tasks determine what the CueCore2 will do when this action is triggered. Several tasks can be placed in the action. There are tasks available for a wide range of CueCore2 features and external protocols. Task types are detailed in Appendix B on page 95.

Please consult the API appendix on page 105 before implementing incoming OSC or UDP messages; the API already exposes typical functionality through OSC and UDP and therefore it might not be necessary to implement custom messages.

9.1 Sources and Action Lists

The Sources listing presents all protocols that the CueCore2 is capable of receiving. It also includes internal features that can create events that can be used for triggering actions, such as the calendar-scheduler. These sources are available, however, they will only be actively listened to once moved to the action-list table.

| | |
|---------------|---|
| GPI | GPI port activity |
| MIDI | MIDI messages |
| UDP | UDP network messages |
| TCP | TCP network messages |
| OSC | OSC network message |
| DMX Input | DMX received on one or more of the DMX ports (switch port to input in the settings page) |
| Art-Net | Art-Net DMX data |
| sACN | sACN DMX data |
| Timecode | Timecode signal, specify the incoming timecode protocol on the Settings page. |
| Kiosc | Triggers from Kiosc. For each Action various controls can be chosen such as buttons and sliders, colour picker etc. The order of the actions will control the arrangement in Kiosc. |
| Scheduler | Triggers based on time, date, weekdays, sunrise, sunset & timespan. |
| Playback | Events generated by the playbacks |
| Randomiser | The randomiser can generate a random number |
| System | Events such as 'Start up' |
| Variable | The Variable source works in combination with the variable task (For more information about the Variable task please refer to Task Types). The Variable task will set a value of which an enabled action-list type with Variable as Source will use as a trigger. The CueCore2 will keep the values of the 10 variables even after shut down so long as the RTC battery is not empty. |
| Timer | There are 4 internal timers in the CueCore2. An event will be raised when a timer expires. Timers are set and activated by the Timer tasks. |
| User List 1-4 | These action-lists will never trigger an event, however, they are useful for advanced programming. |

Action-lists can be temporarily suspended by disabling their checkbox in the Show Control page. There is also a task available to automate changing the state of this checkbox.

9.2 Actions

Actions are executed when a certain signal is received. This signal is defined by the trigger. A trigger is always relative to the action-list the action belongs to. For example, when the trigger-type is set to 'Channel' then it refers to a single

DMX channel if the action is placed inside a 'DMX Input' list and it means a single Art-Net channel if the action resides in an Art-Net action-list.

A trigger is determined by the trigger-type, trigger-value and trigger-flank fields. Although these fields are not applicable for all action-lists and are therefore sometimes omitted in the web GUI. The trigger-type field specifies what kind of signal the action will be triggered by. For example, when making an action in the Scheduler list there is the choice between 'DateAndTime' and 'Week-dayAndTime' trigger-types. The trigger-value specifies the actual signal value. In the scheduler example the trigger-value could be set to "2016-03-24 11:00" or "Weekend 10:00" respectively.

In some action-lists actions do also need to specify the trigger-flank. The flank further specifies the value that the signal should have before triggering the action. For example, when an action is triggered from the Kiosc list, the flank will determine whether to trigger only when the button goes down or only when it goes up. Appendix B provides an overview of the available trigger-types.

An action-list can have up to 48 actions, system-wide there is a maximum of 64 actions.

9.3 Tasks

Tasks are added to an action in order to specify what to do when it gets executed. Up to 8 tasks can be included in an action, systemwide there is a maximum of 128 tasks. The tasks are executed in the order of the list. There is a wide selection of tasks available to choose from, they include altering any of the internal software features like playbacks and recorder but also sending out messages through any of the supported protocols. The tasks are organised in categories. Once a task is chosen from these categories each task allows for further choice between several 'Features' and 'Functions'. Tasks contain up to two parameters that might be required for its execution.

If the event that triggers the action passes a parameter along then this parameter can be used in a task. The 'set' function makes a task use a fixed value, however, when using the 'control' function then the trigger's parameter is used. This is very useful for conversions between protocols.

For example when converting 0-10V to DMX the GPI action specifies the port (e.g. #1) and flank (e.g. OnChange) on which it will trigger. The actual 0-10V level sampled on the GPI port will be passed along and fed into the action. Then when a task (e.g. DMX) uses the function 'control' this 0-10V level will be used for setting the DMX value.

A task can be tested by selecting it and pressing the 'execute' button in the action-edit dialog. The complete action can also be tested; go to the Show Control page, select the action and press the 'execute' button.

Appendix B provides a detailed overview of the available tasks, features, functions and parameters.

9.4 Templates

The Show Control page presents a list of templates. A template is a set of action-list, actions and task. These templates configure the CueCore2 to perform typical functions; for example convert Art-Net to DMX or control the 6 playbacks through OSC. The templates thus save time; otherwise actions should have been set up manually. They can also function as a guide to soften the learning curve on actions; a lot can be learned from adding a template and then exploring the actions and tasks it created. Please note that some templates require settings to be changed in the settings page; for example the 'Receiving Art-Net' template needs the DMX outlets to be set to outputs in order to achieve an Art-Net to DMX conversion. Appendix C gives an overview of the available templates.

9.5 Variables

Variables are part of the show control system in the CueCore2. There are 10 variables and each can hold a value in the range of [0,255]. These values can be manipulated by tasks and can be used for advanced action programming. Variables can be added as sources in order to have actions triggered when a variable changes value.

The values of the variables are stored in the same battery backed-up memory as the RTC; it will hold the values between power cycles if the time between power-on does not exceed a few days. You can see the status of the eight variables in the monitor page, under *Timers*.

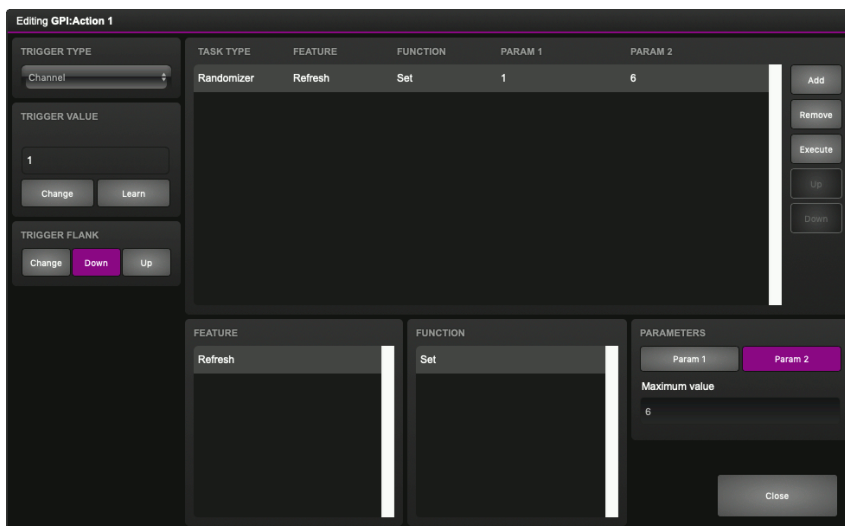
9.6 Timers

The show control system of the CueCore2 features four internal timers. By using tasks, the timers can be set to certain durations and they can be started. Once started the timers will countdown to zero. When the timer reaches zero it will generate an event that can be captured by using the *Timer* action list. Please note that the timer values are not stored between power cycles. You can see the status of the four timers in the monitor page, under *Timers*.

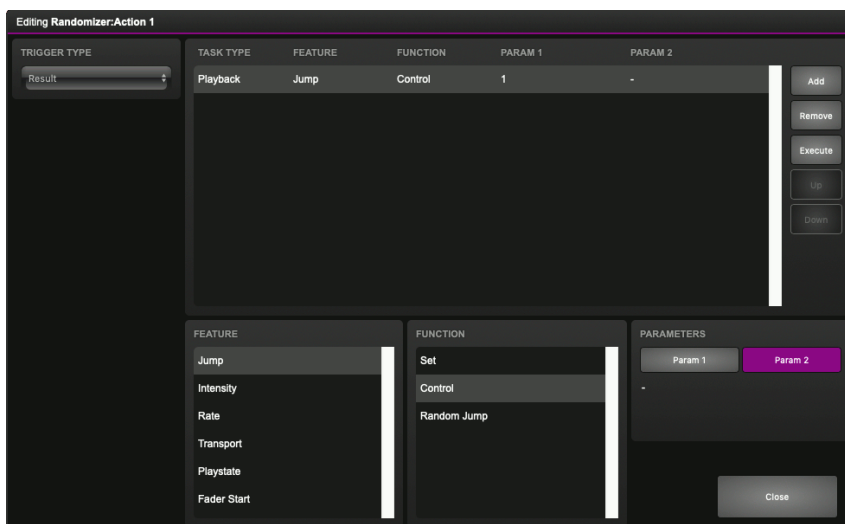
9.7 Randomizer

The randomizer is an internal software feature that can generate a (pseudo-)random number. This is useful for having an event trigger a random lighting scene in a themed environment. The randomizer is activated by the Randomizer-task. The result of the randomizer's calculation can be obtained by catching the event in the Randomizer-actionlist. The following example shows how to use a GPI port to trigger a random cue.

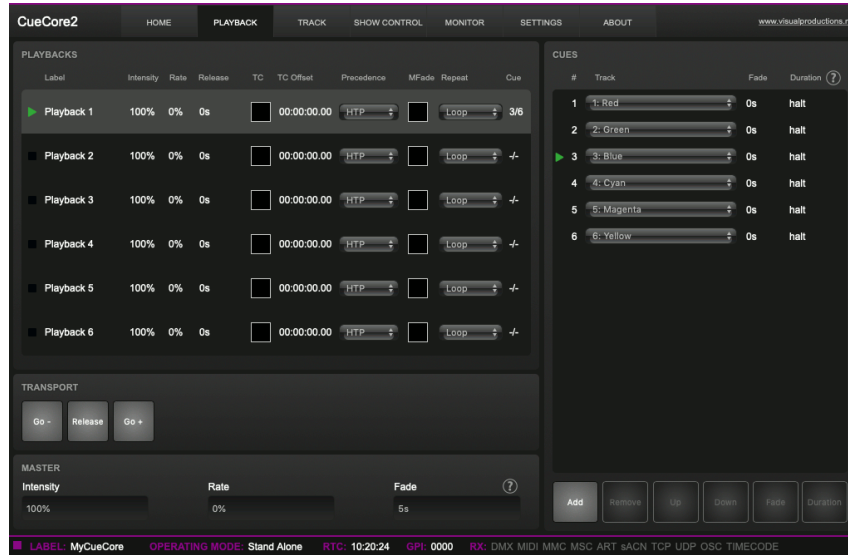
- Inside the GPI actionlist is an action with GPI port 1 as a trigger. This triggers the task Randomizer, which is set to a range of between 1 and 6. (Parameters 1 and 2 of the task Randomizer)



- Next in the actionlist Randomizer there is an action triggered by the Randomizer. The task Playback, controlled by the result of the Randomizer, jumps to a cue in Playback 1 (Parameter 1 of the task Playback).



- When the GPI port is triggered (by a button for example) the Randomizer picks a number between one and six, as defined in the Randomizer task. The Playback task receives this number and triggers the corresponding cue.



Chapter 10

Protocol Conversion

The CueCore2 is fitted with several communication ports and additionally supports various Ethernet-based protocols. Although some protocols are predominantly used for triggering the internal playbacks (such as GPI, MIDI, UDP, OSC, etc.) and some other protocols are mainly used for recording (such as DMX input, Art-Net and sACN) the CueCore2 is capable of converting one protocol into another. This chapter provides an insight on which conversions are possible and how to set them up.

All possible conversions can be organised into two categories: Converting Control Protocols and Converting DMX Universe Protocols.

10.1 Converting Control Protocols

The first category of conversions comprise the protocols typically used for triggering or transporting one piece of information. The following table shows these protocols and what kind of information they are able to carry.

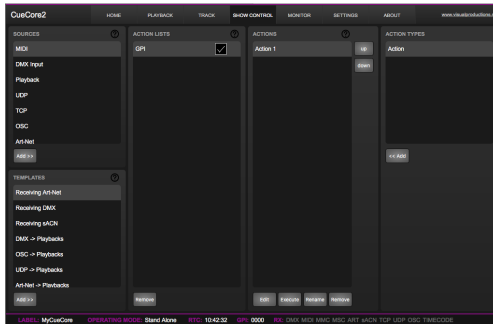
| Control Protocols | Information |
|-------------------|--|
| Digital GPI | On/Off |
| Analog GPI | percentage [0%,100%] |
| MIDI | number [0,127] |
| UDP | - |
| TCP | - |
| OSC | percentage [0%,100%], number, string, colour, On/Off |
| DMX | number [0,255] |
| Art-Net | number [0,255] |
| sACN | number [0,255] |

Although DMX, Art-Net and sACN are dedicated lighting protocols and naturally fit in the next category, their individual channels lend themselves well for

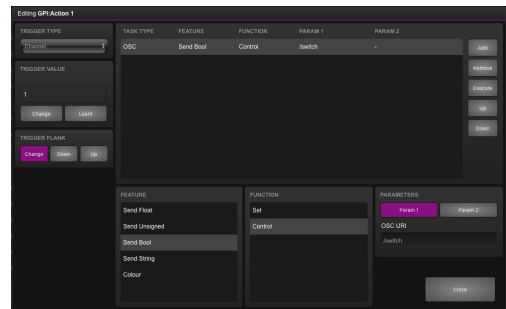
conveying control messages.

Setting up a conversion is done in the Show Control page. First add the incoming protocol from the 'Sources' table into the 'Action list' table. Then add an action to this new action-list. Inside this action the trigger-flank field (if visible) should be set to Change; as this action should be triggered every time the incoming signal changes. Furthermore, a task need to be added, the task-type determines which protocol is the output of our conversion. It is important that the 'function' in this task is set to 'Control'. This will make sure that the output is not a fixed value, rather it will output the information received from the incoming signal.

Please consider two examples. Figure 10.1 shows a conversion between Digital GPI and OSC. This example assumes the GPI Port 1 is set to 'Digital' on the Settings page.



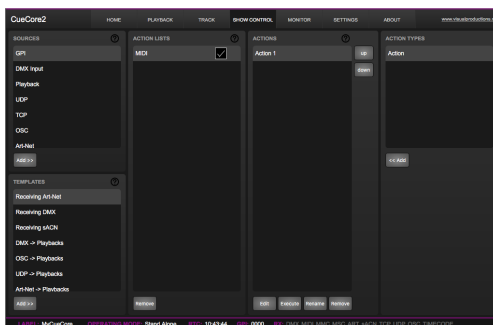
(a) Step 1



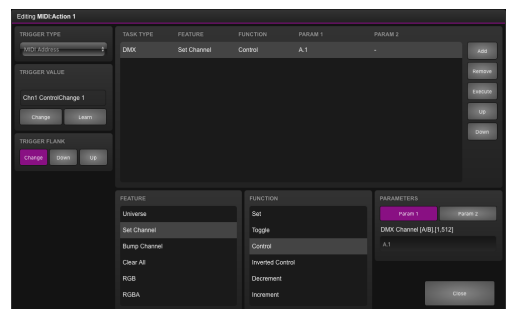
(b) Step 2

Figure 10.1: Conversion from GPI to OSC

Figure 10.2 shows a conversion between MIDI and DMX. This example assumes the DMX Port A is set to 'Output A' on the Settings page.



(a) Step 1



(b) Step 2

Figure 10.2: Conversion from MIDI to DMX

10.2 Converting DMX Universe Protocols

This category includes all protocols that carry a DMX Universe (a block of 512 DMX channels). These protocols are DMX, Art-Net, sACN and to some extent KiNet. The CueCore2 is capable of receiving a complete DMX universe from one protocol and sending it out on a different protocol. Furthermore, it is able to merge DMX universes from multiple sources into one output protocol, allowing the user to define the method of merging (HTP, LTP or Priority). All this is done with a minimal amount of configuration in the CueCore2. The following table lists examples of the conversions that can be made.

Example DMX Universe Conversions

DMX ->Art-Net

Art-Net ->DMX

DMX ->sACN

sACN ->DMX

DMX ->KiNet

Art-Net ->sACN

It is also possible to create combinations of the examples above. For instance you could set up a conversion from DMX to both Art-Net and sACN. Or merge incoming Art-Net and sACN together into the DMX output. Also, at any point it is possible to merge the incoming DMX data with the data generated by the internal playbacks.

To set up the conversion go to the Show Control page and choose the incoming protocol from the 'Sources' table and add it to the 'Action lists' table. Then add an action for each DMX Universe you wish to convert; e.g. when converting two DMX ports to Art-Net it requires two action to be programmed. The trigger-type in the actions should be set to 'Universe' to make the CueCore2 process the 512 channels as a whole rather than process individual channels. Each action should contain a DMX-task with the 'feature' set to 'Universe'; all DMX Universe data is first being copied into the CueCore2's internal DMX buffer. From this buffer it can be copied to the DMX outlet or the other protocols such as Art-Net and sACN. Figure 10.3 provides a schematic for this data flow.

The 'function' determines how the DMX data is merged; it controls the precedence. There is the following choice:

Function

Control HTP Highest Takes Precedence

Control LTP Highest Takes Precedence

Control Priority

Clear

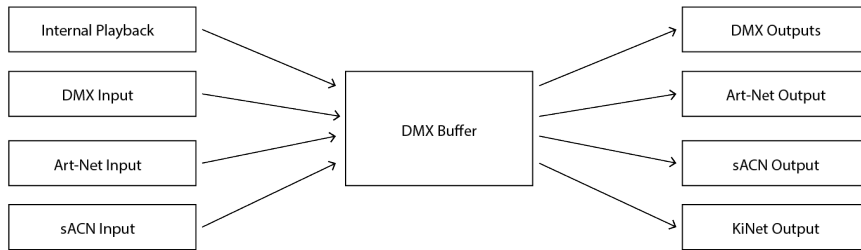


Figure 10.3: DMX merging data flow

The HTP precedence is the default choice where all channels are compared and the highest levels are used for the merged output. Amongst all the playbacks set to LTP only one of them is included in the HTP merge; the LTP playback that has been activated latest. If there is task function set to Priority and this signal is actively received, then this data will be send directly to the output, temporarily suspending all HTP and LTP sources. When multiple conversions are set to Priority then those will be merged according to highest takes precedence. Figure 10.4 illustrates this mechanism.

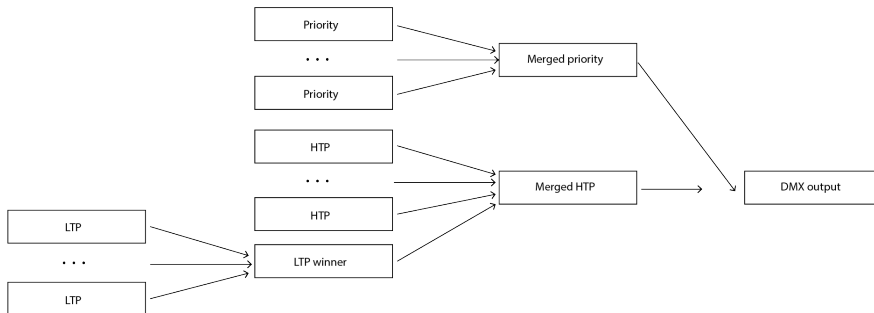


Figure 10.4: DMX merging precedence

The additional 'Clear' function is not related to the data merging precedence; it is just a function to clear the whole universe to zero.

Please note that the 'Templates' table provides pre-programmed configurations for the most popular conversions.

A very typical conversion that can illustrate as an example is to convert Art-Net universes 0.0 and 0.1 to DMX output A and B respectively. Figure 10.5 shows action-list, figure 10.6 show the contents of 'Action 1' and figure 10.7 show the required configuration of the Settings page.

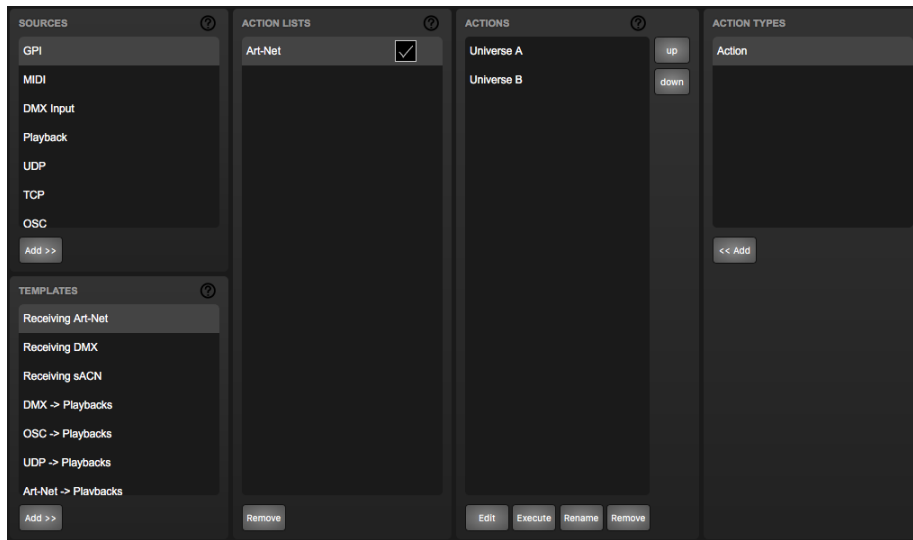


Figure 10.5: Converting Art-Net to DMX step 1

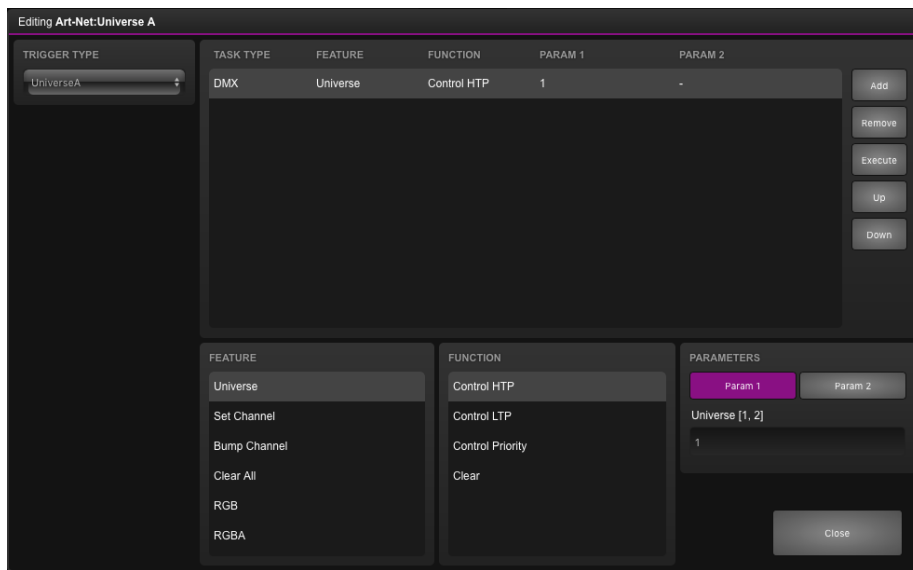


Figure 10.6: Converting Art-Net to DMX step 2

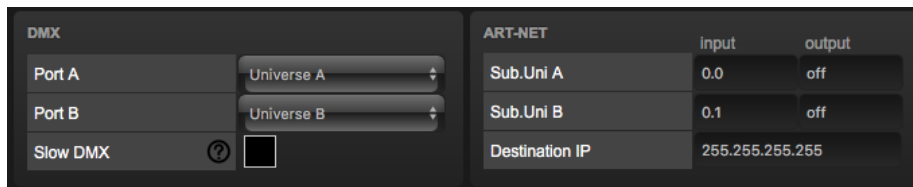


Figure 10.7: Converting Art-Net to DMX step 3

Chapter 11

Monitors

This page allows the user to inspect the incoming and outgoing data, both DMX-type data (See figure 11.1) as well as control messages (See figure 11.2). Monitoring incoming and outgoing data can help the user troubleshoot during programming.



Figure 11.1: DMX Monitor page

In the Monitor page three different sources of input can be found (DMX, Art-Net and sACN), along with the control input and output sources (TCP, UDP and OSC). On the right side of the page there are the universes where the user can swap between the four of them or choose a preferable unit for displaying the requested information.

CueCore2 HOME PLAYBACK TRACK SHOW CONTROL **MONITOR** SETTINGS ABOUT www.visualproductions.nl

Outputs DMX inputs Art-Net inputs sACN inputs MIDI TCP UDP **OSC**

| INPUT | | | OUTPUT | | |
|--------------------|----------|----------|--------------------|---------|----------|
| IP | URI | Argument | IP | URI | Argument |
| 192.168.1.249:8000 | /button6 | Off | 192.168.1.105:8001 | /switch | Off |
| 192.168.1.250:8000 | /led5 | On | 192.168.1.255:8000 | /switch | Off |
| 192.168.1.249:8000 | /button6 | On | 192.168.1.105:8001 | /switch | On |
| 192.168.1.249:8000 | /button3 | Off | 192.168.1.255:8000 | /switch | On |
| 192.168.1.250:8000 | /led3 | On | --- | --- | --- |
| 192.168.1.249:8000 | /button3 | On | --- | --- | --- |
| 192.168.1.249:8000 | /button1 | Off | --- | --- | --- |
| 192.168.1.250:8000 | /led1 | On | --- | --- | --- |
| 192.168.1.249:8000 | /button1 | On | --- | --- | --- |
| 192.168.1.249:8000 | /button2 | Off | --- | --- | --- |

■ LABEL: MyCueCore OPERATING MODE: Stand Alone RTC: 11:19:35 GPI: 0000 RX: DMX MIDI MMC MSC ART sACN TCP UDP OSC TIMECODE

Figure 11.2: OSC Monitor page

Chapter 12

Settings

The CueCore2's settings are organised into sections, see the Settings page figure 12.1. This chapter will discuss each section.

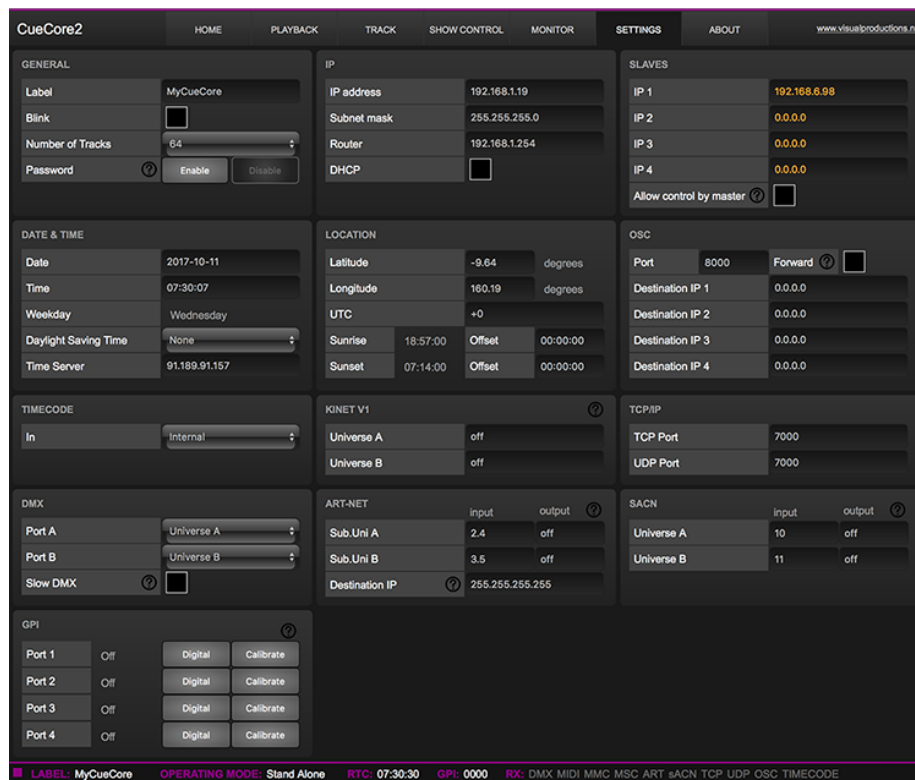


Figure 12.1: Settings page

12.1 General

You can change the CueCore2's label. This label can be used to distinguish the unit in a set-up with multiple devices.

By enabling the *Blink* checkbox the device's LED will blink to help to identify it amongst multiple devices.

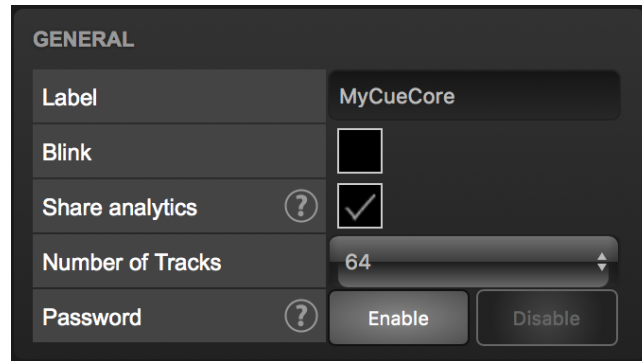


Figure 12.2: General Settings

The *Number of Tracks* drop-down determines the organisation of the Track memory. This is discussed on page 46. **Changing the number of tracks will result in losing the current content of the tracks.**

By enabling the *Share Analytics* options, you will help Visual Productions improve its products. When enabled, the CueCore2 will send daily diagnostics and usage data to Visual Productions. This information remains anonymous.

Unauthorised users can be prevented by making changes to the CueCore2 by enabling the password protection. Once enabled, the password can be disabled via the web-interface (using the 'Disable' button) and the reset button (see figure 5.2). Long-press the reset button to disable the password protection; this will also revert the unit's static IP back to the default factory settings.

12.2 IP

The IP fields are for setting up the IP address and subnet mask of the CueCore2. The *Router* field is only required when Port Forwarding is used. You can also enable or disable the DHCP feature (For more information see chapter 5 at page 33).

12.3 Slaves

This section enables the master-slave synchronisation.

The master-CueCore2 should specify the IP addresses of its slaves. When the IP is indicated in white then the master-slave connection is established, otherwise the IP is indicated in orange. For creating a system with more than four slaves, a broadcast IP can be set. A message sent to a broadcast address may

| IP | |
|-------------|--------------------------|
| IP address | 192.168.1.14 |
| Subnet mask | 255.255.255.0 |
| Router | 192.168.1.254 |
| DHCP | <input type="checkbox"/> |

Figure 12.3: IP Settings

| SLAVES | |
|---------------------------|--------------------------|
| IP 1 | 192.168.1.15 |
| IP 2 | 0.0.0.0 |
| IP 3 | 0.0.0.0 |
| IP 4 | 0.0.0.0 |
| Allow control by master ? | <input type="checkbox"/> |

Figure 12.4: Slaves Settings

be received by all network-attached hosts. A typical broadcast IP address is 192.168.1.255, however, this depends on the subnet used.

The slave-CueCore2 units require the 'Allow control by master' checkbox to be enabled. **Enabling 'Allow control by master' checkbox will cause playback data to be overwritten.**

12.4 Date & Time

The date and time of the RTC can be set here. The clock has a back-up battery to keep the time during a power down. Daylight Saving Time (DST) is supported for the regions Europe and United States.

The Time Server field allows a NTP server to be specified. At start up, the CueCore2 will fetch the time and date from this server. Additionally, an action can be used to fetch the time. The DST and the Coordinated Universal Time (UTC) are taken into account when obtaining the time for the NTP server.

The following table lists suggested NTP servers.

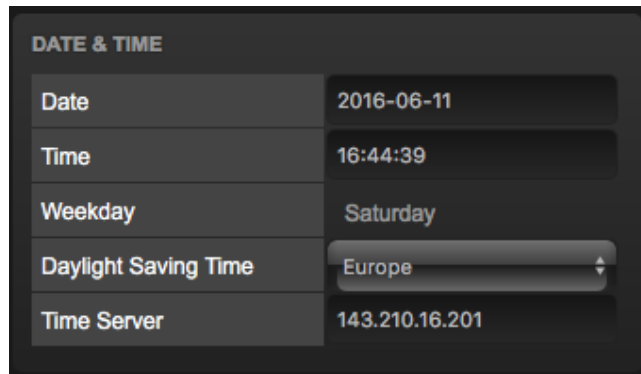


Figure 12.5: Date & Time Settings

| Continent | Server |
|---------------|----------------|
| North America | 64.90.182.55 |
| South America | 201.49.148.135 |
| Europe | 143.210.16.201 |
| Africa | 196.23.245.74 |
| Asia | 133.100.9.2 |
| Australia | 137.92.140.80 |

12.5 Location

The astronomical clock in the CueCore2 calculates the sunrise and sunset times based on day of the year, latitude, longitude and UTC. The latitude and longitude values define the position in the world and should be entered in degrees. The latitude value should be positive for North and negative for South, the longitude should positive for East and negative for West.

The website <http://www.findlatitudeandlongitude.com/> can help discover the latitude and longitude values for the current location. The time-zone and perhaps daylight saving time of the current location is expressed in the UTC value. UTC is - in this context - equivalent to Greenwich Mean Time (GMT).

For example, Visual Productions' HQ is based in the city of Haarlem, the Netherlands. During the winter the UTC equals +1 and in the summer during day light saving time it is set to +2. So, the settings for the Visual Productions' HQ are shown in Figure 12.6.

The Offset fields allows to shift the sunrise and sunset triggers, both earlier and later. For example, to have a trigger half an hour before sunrise set the offset to -00:30.

| LOCATION | | | |
|-----------|----------|---------|----------|
| Latitude | 52.39 | degrees | |
| Longitude | 4.64 | degrees | |
| UTC | +1 | | |
| Sunrise | 04:19:00 | Offset | 00:00:00 |
| Sunset | 21:03:00 | Offset | 00:00:00 |

Figure 12.6: Location settings

12.6 OSC

External equipment sending OSC messages to the CueCore2 need to be aware of the number specified in the 'Port' field. This is the port the CueCore2 listens to for incoming messages.

| OSC | | | |
|----------|-------------------|---------|--------------------------|
| Port | 8000 | Forward | <input type="checkbox"/> |
| Out IP 1 | 192.168.1.40:8000 | | |
| Out IP 2 | 0.0.0.0 | | |
| Out IP 3 | 0.0.0.0 | | |
| Out IP 4 | 0.0.0.0 | | |

Figure 12.7: OSC Settings

The CueCore2 will send its outgoing OSC messages to the IP addresses specified in the 'Out IP' fields. Up to four IPs can be specified here. Use the 'ipaddress:port' format in these fields, e.g. "192.168.1.11:9000". If a field should not be used that it can be filled with IP 0.0.0.0. It is possible to enter a broadcast IP address like 192.168.1.255 in order to reach more than four recipients.

Enabling the *Forward* checkbox will have the CueCore2 copy every incoming OSC message and send it the addresses specified in the 'Out IP' fields.

12.7 Timecode

The CueCore2 can receive SMPTE, MTC and Art-Net timecode. This section allows to choose one of these protocols as the timecode source. Alternatively,

the CueCore2 also has 'internal' timecode; a timecode generated by the unit itself. Synchronisation of playbacks and actions depend on this choice.

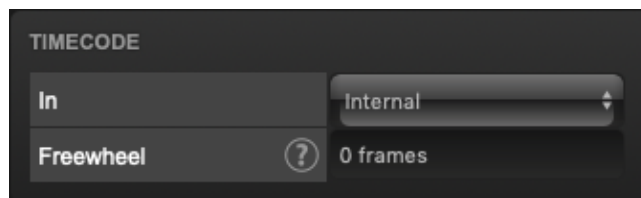


Figure 12.8: Timecode Settings

The timecode freewheel will allow continue for some frames after the timecode source stops. "Forever" can be entered to continue when no timecode is received.

12.8 KiNet v1

The CueCore2 features transmission of DMX data via KiNet; it supports KiNet protocol version 1.

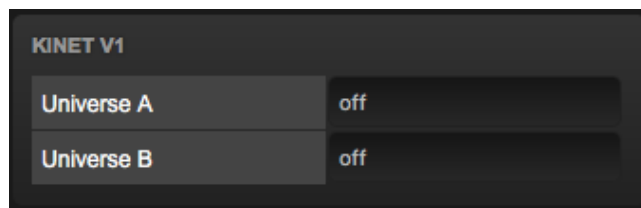


Figure 12.9: Kinet Settings

12.9 TCP/IP

Defines the listening ports for TCP and UDP messages. External system intending to send TCP or UDP message to the CueCore2 should need to know the unit's IP address and this port number. By default both ports are set to 7000.

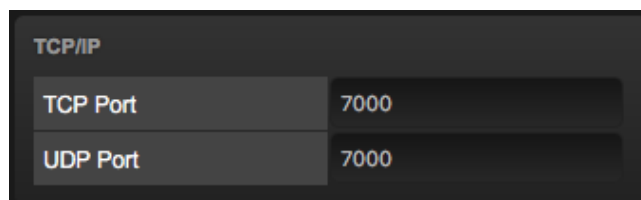


Figure 12.10: TCP/IP settings

12.10 DMX

The DMX settings specify whether a DMX port is input or output. Select 'Universe X' to set it to output.

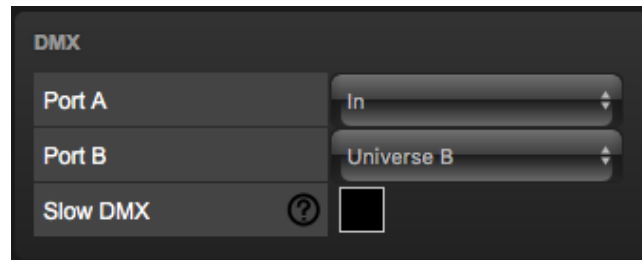


Figure 12.11: DMX settings

When the 'Slow DMX' checkbox is enabled, the CueCore2 will slow down the rate at which it sends out DMX from its ports. This is done to facilitate DMX fixtures that have difficulties keeping up with the optimal DMX transmission rate.

When programming a show that does not use all DMX universes it can be useful to set multiple DMX ports to the same universe. This can make cabling more efficient and perhaps prevent the need of a DMX splitter. For example, when using only 512 channels both DMX ports can be set to 'Universe A'.

12.11 Art-Net

The Art-Net feature in the CueCore2 supports 2 universes out or 2 universes in. These universes can be mapped to any of the 256 available universes in the Art-Net protocol. The universe is entered in the 'subnet.universe' format, i.e. the lowest universe number is written as '0.0' and the highest universe number is denoted as '15.15'. The outgoing Art-Net transmission can be disabled by entering 'off' in the output fields.

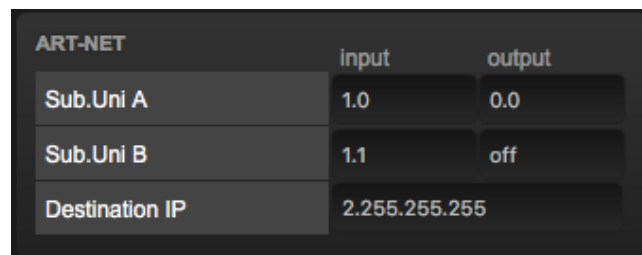
A screenshot of an Art-Net settings table. The table has three columns: 'ART-NET', 'input', and 'output'. The rows are 'Sub.Uni A' with input '1.0' and output '0.0', 'Sub.Uni B' with input '1.1' and output 'off', and 'Destination IP' with the value '2.255.255.255'.

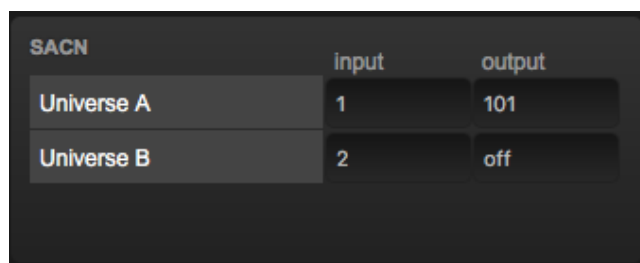
Figure 12.12: Art-Net settings

The destination IP determines where the outgoing Art-Net data will be sent to. Typically, this field contains a broadcast address like 2.255.255.255 which will send the Art-Net data to the 2.x.x.x IP range. Another typical Art-Net broad-

cast address is 10.255.255.255. When using broadcast address 255.255.255.255 then all the devices on the network will receive the Art-Net data.

It is also possible to fill in a unicast address like 192.168.1.11; in this case the Art-Net data will be send to one IP address only. This keeps the rest of the network clean of any Art-Net network messages.

12.12 sACN



| SACN | input | output |
|------------|-------|--------|
| Universe A | 1 | 101 |
| Universe B | 2 | off |

Figure 12.13: sACN settings

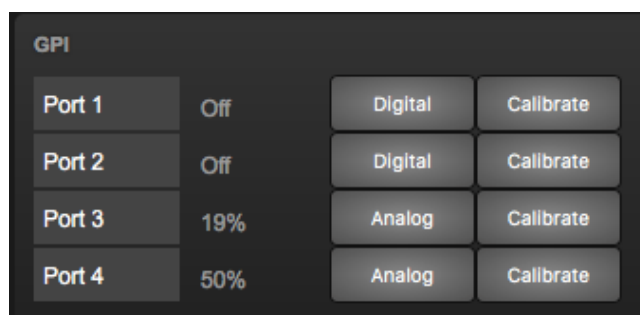
The CueCore2 supports 2 incoming sACN universes and 2 outgoing universes. Each universe field should hold a number in the range of [1,63999]. Outgoing sACN transmission can be disabled by entering 'off' into the sACN output fields.

12.13 GPI

The GPI ports can be configured either as digital (contact-closure) or as analog (0-10V) input.

In case a port is set as analog and the signal supplied falls within the 0-10V range (e.g. 1-5V) then it is recommended to calibrate to port in order to map the minimal voltage to a logical 0% and map the maximum voltage to 100%.

To perform a calibration first enable the Calibrate button, then bring the incoming signal to the minimum level, bring the signal to the maximum level and then close the calibration process by clicking the Calibrate button again.

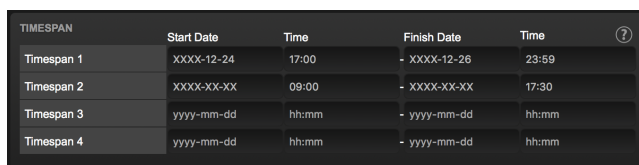


| GPI | | | |
|--------|-----|---------|-----------|
| Port 1 | Off | Digital | Calibrate |
| Port 2 | Off | Digital | Calibrate |
| Port 3 | 19% | Analog | Calibrate |
| Port 4 | 50% | Analog | Calibrate |

Figure 12.14: GPI Settings

Do not apply more than 10V to the GPI port, as this could cause permanent damage.

12.14 Timespan



| TIMESPAN | Start Date | Time | Finish Date | Time | ? |
|------------|------------|-------|--------------|-------|---|
| Timespan 1 | XXXX-12-24 | 17:00 | - XXXX-12-26 | 23:59 | |
| Timespan 2 | XXXX-XX-XX | 09:00 | - XXXX-XX-XX | 17:30 | |
| Timespan 3 | yyyy-mm-dd | hh:mm | - yyyy-mm-dd | hh:mm | |
| Timespan 4 | yyyy-mm-dd | hh:mm | - yyyy-mm-dd | hh:mm | |

Figure 12.15: Timespan settings

The *Timespan* section allows for four periods of time to be defined. The beginning and end of the time periods will trigger actions in the show control page.

An advantage of *Timespans* over normal scheduler actions is that Timespans are power-cycle safe. When the CueCore2 is without power during the moment of a normal scheduler trigger then it will miss that trigger. *Timespans*, however, will still receive the trigger once the power is restored after the moment has occurred.

Timespans are ideal for defining periods of time during a year (like Christmas or Easter) or periods during the day (like opening times).

When entering the date and time data, XX's can be used to signify a 'don't care'. This allows for easily programming of yearly, monthly or daily re-occurring events.

Chapter 13

vManager

A free-of-charge software tool called vManager has been developed to manage the devices. vManager allows for:

- Setup the IP address, subnet mask, router and DHCP
- Backup and restore the device's internal data and settings
- Perform firmware updates
- Set the real-time clock of the CueCore2 (The computer's date and time will be used)
- Identify a specific device (in a multi device set-up) by blinking its LED
- Revert to factory defaults

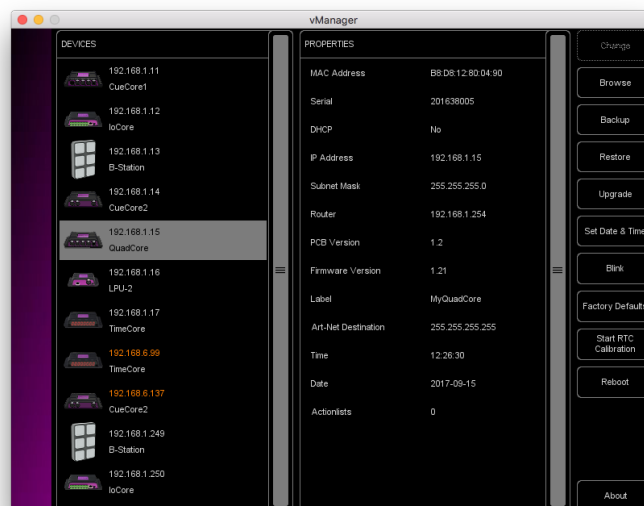


Figure 13.1: vManager

The following section explain the buttons in the vManager, as seen in figure 13.1.

13.1 Backup

Backups of all the programming data inside the device can be made. This backup file (an XML) is saved on the computer's hard-disk and can be easily transferred via e-mail or USB stick. The data of the backup can be restored via the Restore button.

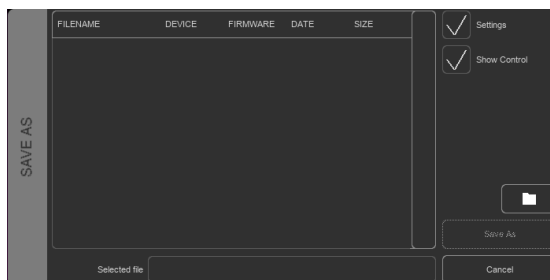


Figure 13.2: Creating a backup

Apps distributed by app stores are not allowed to access files outside this designated location. It is important to know where vManager is storing its files, in case you wish transfer a backup file to memory stick or dropbox.

The designated file location differs per operating system and is likely to be a long and obscure path. For this reason, vManager provides you with a shortcut to the correct file location. A *Folder* button can be found in the file related dialogs. Clicking this button will open a file browser at appropriate folder.

13.2 Upgrade Firmware

To upgrade the firmware, first select the device and press the Upgrade Firmware button. The dialogue allows for selecting from the list of firmware versions available.



Figure 13.3: Firmware upgrade

Warning: Make sure the power to the device is not interrupted during the upgrade process.

13.3 Set Date & Time

The computer's date and time can be quickly copied to the unit by selecting a device and clicking the Set Date & Time button. Not all Visual Productions devices feature an internal real-time clock.

13.4 Blink

The device's LED can be set to blink fast for identifying the particular unit amongst multiple devices. The blinking is enabled by double-clicking on a device in the Devices list or by selecting a device and then clicking the Blink button.

13.5 Factory Defaults

All the user data like cues, tracks and actions are stored on the memory. They will be completely erased and all settings will be reverted to their defaults by pressing the Factory Defaults button. This action does not affect the device's IP settings.

13.6 RTC Calibration

The CueCore2 features an internal real-time clock (RTC) that is used for generating scheduler triggers (date, time, sunrise, etc). In case that the clock is drifting, i.e. slowly falling behind or getting ahead of the real time, then it can be calibrated again using the vManager. The procedure is as follows:

1. Select the CueCore2
2. Click on the 'Start RTC Calibration' button
3. wait approximately 30 minutes
4. Click on the 'Stop RTC Calibration' button
5. Apply the recommended calibration value in the dialog (figure 13.4)

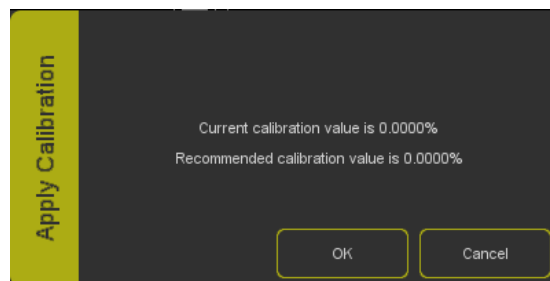


Figure 13.4: Apply calibration value

13.7 Reboot

The Reboot button allows you to remotely restart the device. This is useful for testing the unit's behaviour after a power-cycle.

13.8 Installing vManager

The vManager app is available on a wide range of operating systems, both mobile and desktop.

The software is distributed through app-stores to take advantage of receiving future software updates automatically.

13.8.1 iOS

vManager can be downloaded from the Apple iOS app-store at itunes.apple.com/us/app/vman/id1133961541.

13.8.2 Android

vManager can be found on the Google Play store at play.google.com/store/apps/details?id=org.visualproductions.manager.

Android 5.0 or higher is required.

13.8.3 Windows

Visit the Microsoft store at www.microsoft.com.

Windows 10 or higher is required.

13.8.4 macOS

Visit the Apple macOS app store at itunes.apple.com/us/app/vman/id1133961541.

macOS 10.13 is recommended.

13.8.5 Ubuntu

You can acquire the vManager from the uApp Explorer uappexplorer.com/snap/ubuntu/vmanager.

Alternatively, it can be installed by using the command-line:

```
snap find vmanager
snap install vmanager
```

To update the apps later on via the command-line type:

```
snap refresh vmanager
```

Ubuntu 18.04 LTS is recommended. The software is only available for the amd64 architecture.

Chapter 14

Kiosc

Kiosc is an app for creating custom user-interface. This app (see figure 14.1) is available on many operating systems: (iOS, Android, Windows, macOS & Ubuntu Linux). It can remote control lighting controllers from Visual Productions such as CueluxPro, CueCore, IoCore, LPU-2 and the B-Station.

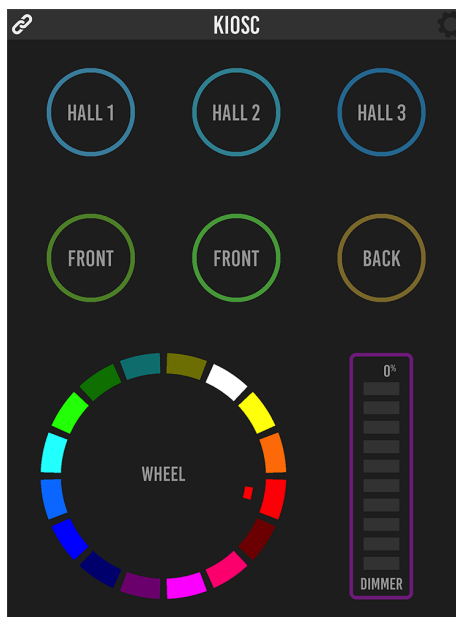


Figure 14.1: Kiosc

Please read the Kiosc manual, available from <http://www.visualproductions.nl/downloads>, for more details.

Appendices

Appendix A

Trigger Types

The following tables list the different types of triggers that can be used in the CueCore2. The different types are accompanied with values and flanks.

A.1 GPI

| Trigger Type | Trigger Value | Flank | Description |
|-----------------|-------------------|--------|---|
| Channel | Port number | Change | Port state changes |
| Channel | Port number | Down | Port is closed |
| Channel | Port number | Up | Port is opened |
| Channel 0-19% | Port number | Change | Analog level enters or leaves the range |
| Channel 0-19% | Port number | Down | Analog level enters the range |
| Channel 0-19% | Port number | Up | Analog level leaves the range |
| Channel 20-39% | Port number | Change | Analog level enters or leaves the range |
| Channel 20-39% | Port number | Down | Analog level enters the range |
| Channel 20-39% | Port number | Up | Analog level leaves the range |
| Channel 40-59% | Port number | Change | Analog level enters or leaves the range |
| Channel 40-59% | Port number | Down | Analog level enters the range |
| Channel 40-59% | Port number | Up | Analog level leaves the range |
| Channel 60-79% | Port number | Change | Analog level enters or leaves the range |
| Channel 60-79% | Port number | Down | Analog level enters the range |
| Channel 60-79% | Port number | Up | Analog level leaves the range |
| Channel 80-100% | Port number | Change | Analog level enters or leaves the range |
| Channel 80-100% | Port number | Down | Analog level enters the range |
| Channel 80-100% | Port number | Up | Analog level leaves the range |
| Binary | Combination value | - | A combination of ports being closed |
| Short press | Port number | - | Short closure on port |
| Long press | Port number | - | Long closure on port |

Use the Binary trigger type to catch port combinations when they are set as digital. Specify the port combination by adding the values that correspond to the ports (see table below). This value is entered as the trigger value.

| Port | Value |
|------|-------|
| 1 | 1 |
| 2 | 2 |
| 3 | 4 |
| 4 | 8 |

For example, to trigger on both port 1 and 2 being closed fill in trigger value 3 (1+2). To trigger on port 3 and 4, fill in value 12 (4+8).

A.2 MIDI

| Trigger Type | Trigger Value | Flank | Description |
|--------------|---------------|--------|---|
| Message | MIDI address | Change | Receive a message that matches the address |
| Message | MIDI address | Down | Receive a message that matches the address and the value non-zero |
| Message | MIDI address | Up | Receive a message that matches the address and the value is zero |
| Receiving | - | - | Receive any message |

MIDI address can be any note-on, note-off or control-change.

A.3 DMX Input

| Trigger Type | Trigger Value | Flank | Description |
|--------------|---------------|----------|---|
| Channel | DMX Address | Change | Channel changes |
| Channel | DMX Address | Non-zero | Channel becomes non-zero |
| Channel | DMX Address | Zero | Channel becomes zero |
| UniverseA | - | - | A DMX level change in the first universe |
| UniverseB | - | - | A DMX level change in the second universe |
| Receiving | - | Change | Start receiving or loose DMX signal |
| Receiving | - | Stop | Lost DMX signal |
| Receiving | - | Start | Start receiving DMX signal |

A.4 Playback

| Trigger Type | Trigger Value | Flank | Description |
|--------------|----------------|----------|---------------------------------------|
| Active | Playback Index | Change | Playback starts or stops |
| Active | Playback Index | Released | Playback stops |
| Active | Playback Index | Start | Playback starts |
| Release | Playback Index | Change | Playback starts or finishes releasing |
| Release | Playback Index | Released | Playback finished releasing |
| Release | Playback Index | Release | Playback starts releasing |
| Released | Playback Index | Change | Playback starts or stops |
| Released | Playback Index | Playing | Playback starts playing |
| Released | Playback Index | Released | Playback finished releasing |
| Playing | Playback Index | Change | Playback starts or stops |
| Playing | Playback Index | Release | Playback starts releasing |
| Playing | Playback Index | Playing | Playback starts playing |
| Running | Playback Index | Change | Playback starts or pauses |
| Running | Playback Index | Paused | Playback pauses |
| Running | Playback Index | Playing | Playback starts playing |
| Intensity | Playback Index | Change | Playback intensity changes |
| Intensity | Playback Index | Non-zero | Playback intensity becomes >0% |
| Intensity | Playback Index | Zero | Playback intensity becomes 0% |
| End | Playback Index | - | Playback stops playing |
| CueChange | Cue Index | Change | Cue activated or deactivated |
| CueChange | Cue Index | Inactive | Cue becomes inactive |
| CueChange | Cue Index | Active | Cue becomes active |
| CueIndex | Playback Index | - | Active cue index changed |
| CueLabel | Playback Index | - | Label of the current Cue |
| TrackBegin | Playback Index | - | Track starts |

A.5 UDP

| Trigger Type | Trigger Value | Flank | Description |
|--------------|---------------|-------|--|
| Message | String | - | Receive a message that matches the trigger-value |
| Receiving | - | - | Receive any message |

The user can define his own string as the trigger value of a message. Please note that this string has a maximum length of 31 characters.

A.6 TCP

| Trigger Type | Trigger Value | Flank | Description |
|--------------|---------------|-------|--|
| Message | String | - | Receive a message that matches the trigger-value |
| Receiving | - | - | Receive any message |

The user can define his own string as the trigger value of a message. Please note that this string has a maximum length of 31 characters.

A.7 OSC

| Trigger Type | Trigger Value | Flank | Description |
|--------------|---------------|--------|---|
| Message | URI | Change | Receive a message that matches the URI |
| Message | URI | Down | Receive a message that matches the URI and the value non-zero |
| Message | URI | Up | Receive a message that matches the URI and the value is zero |
| Receiving | - | - | Receive any message |

The user can define his own URI as the trigger value of a message, however, the OSC specification dictate this string must start with a '/' sign. Please note that this string has a maximum length of 31 characters, including the '/'.

A.8 Art-Net

| Trigger Type | Trigger Value | Flank | Description |
|--------------|---------------|----------|---|
| Channel | DMX Address | Change | Channel changes |
| Channel | DMX Address | Non-zero | Channel becomes non-zero |
| Channel | DMX Address | Zero | Channel becomes zero |
| UniverseA | - | - | A DMX level change in the first universe |
| UniverseB | - | - | A DMX level change in the second universe |
| Receiving | - | Change | Start receiving or loose Art-Net signal |
| Receiving | - | Stop | Lost Art-Net signal |
| Receiving | - | Start | Start receiving Art-Net signal |

A.9 sACN

| Trigger Type | Trigger Value | Flank | Description |
|--------------|---------------|----------|---|
| Channel | DMX Address | Change | Channel changes |
| Channel | DMX Address | Non-zero | Channel becomes non-zero |
| Channel | DMX Address | Zero | Channel becomes zero |
| UniverseA | - | - | A DMX level change in the first universe |
| UniverseB | - | - | A DMX level change in the second universe |
| Receiving | - | Change | Start receiving or loose sACN signal |
| Receiving | - | Stop | Lost sACN signal |
| Receiving | - | Start | Start receiving sACN signal |

A.10 Timecode

| Trigger Type | Trigger Value | Flank | Description |
|--------------|---------------|--------|--|
| Time | Frame | - | Timecode frame |
| Receiving | - | Change | Start receiving or loose timecode signal |
| Receiving | - | Stop | Lost timecode signal |
| Receiving | - | Start | Start receiving timecode signal |

A.11 Kiosc

| Trigger Type | Trigger Value | Flank | Description |
|--------------|---------------|--------|------------------------------|
| - | - | Change | Button/Fader goes up or down |
| - | - | Down | Button is pressed |
| - | - | Up | Button is released |

When editing the Kiosc actionlist it will be possible to add different kind of actions such as Button, Fader and Colour Picker. These elements will be displayed in the Kiosc software.

A.12 Scheduler

| Trigger Type | Trigger Value | Flank | Description |
|----------------|---------------|--------|---|
| WeekdayAndTime | - | - | Enable weekdays and specify a time (don't care 'X' can be used) |
| DateAndTime | - | - | Specify a specific date and time (don't care 'X' can be used) |
| Sunrise | - | - | When the sun rises in the morning |
| Sunset | - | - | When the sun goes down in the evening |
| DaylightST | - | Change | Daylight Saving Time period starts or ends |
| DaylightST | - | Stop | Daylight Saving Time period ends |
| DaylightST | - | Start | Daylight Saving Time period starts |
| Timespan [1-4] | - | Change | Timespan [1-4] starts or ends |
| Timespan [1-4] | - | Start | Timespan [1-4] Starts |
| Timespan [1-4] | - | Finish | Timespan [1-4] Ends |

A.13 Randomizer

| Trigger Type | Trigger Value | Flank | Description |
|----------------|--------------------------------|-------|--|
| Result | - | - | The Randomizer made a new value |
| Specific Value | Number in the range of [0,255] | - | The Randomizer made a value that matches |

A.14 System

| Trigger Type | Trigger Value | Flank | Description |
|--------------------|---------------|--------|---|
| Startup | - | - | The CueCore2 has been power up |
| Network Connection | - | Change | Network connection established or lost |
| Network Connection | - | Stop | Network connection lost |
| Network Connection | - | Start | Network connection established |
| ReleasedByMaster | - | Change | Master (e.g. CueluxPro) released or obtained connection |
| ReleasedByMaster | - | Stop | Master released connection |
| ReleasedByMaster | - | Start | Master obtained connection |

A.15 Variable

| Trigger Type | Trigger Value | Flank | Description |
|--------------|----------------|------------|--|
| Channel | Variable Index | - | The specified variable changes |
| Variable 1 | Number [0,255] | Change | Variable 1 becomes equal or not equal to the specified number |
| Variable 1 | Number [0,255] | Equal | Variable 1 = number |
| Variable 1 | Number [0,255] | Stop Equal | Variable 1 stops to be equal to number |
| Variable 2 | Number [0,255] | Change | Variable 2 becomes equal or not equal to the specified number |
| Variable 2 | Number [0,255] | Equal | Variable 2 = number |
| Variable 2 | Number [0,255] | Stop Equal | Variable 1 stops to be equal to number |
| Variable 3 | Number [0,255] | Change | Variable 3 becomes equal or not equal to the specified number |
| Variable 3 | Number [0,255] | Equal | Variable 3 = number |
| Variable 3 | Number [0,255] | Stop Equal | Variable 1 stops to be equal to number |
| ... | | | |
| Variable 9 | Number [0,255] | Change | Variable 9 becomes equal or not equal to the specified number |
| Variable 9 | Number [0,255] | Equal | Variable 9 = number |
| Variable 9 | Number [0,255] | Stop Equal | Variable 1 stops to be equal to number |
| Variable 10 | Number [0,255] | Change | Variable 10 becomes equal or not equal to the specified number |
| Variable 10 | Number [0,255] | Equal | Variable 10 = number |
| Variable 10 | Number [0,255] | Stop Equal | Variable 1 stops to be equal to number |

A.16 Timer

| Trigger Type | Trigger Value | Flank | Description |
|--------------|---------------|--------|--|
| Channel | Timer Index | Change | The timer starts or stops |
| Channel | Timer Index | Stop | The timer stops |
| Channel | Timer Index | Start | The timer starts |
| Time | Timer Index | - | A Stream of the current time of that timer |

A.17 Actionlist

| Trigger Type | Trigger Value | Flank | Description |
|--------------|------------------|--------|--|
| - | Actionlist Index | Change | The actionlist enable checkbox changes |
| - | Actionlist Index | Down | The actionlist is enabled |
| - | Actionlist Index | Up | The actionlist is disabled |

Appendix B

Task Types

Tasks allow you to automate the functionality in the CueCore2. All this functionality is categorized in task-types. This appendix provides a listing of the various task-types. The tables present an overview of all available features and functions per task-type.

B.1 Playback

Manipulate one of the six playbacks.

| Feature | Function | Parameter 1 | Parameter 2 |
|-------------|------------------|----------------|-------------------------|
| Intensity | Set | Playback Index | percentage [0%,100%] |
| Intensity | Control | Playback Index | - |
| Set Rate | Set | Playback Index | percentage [-100%,100%] |
| Set Rate | Control | Playback Index | - |
| Transport | Pause | Playback Index | - |
| Transport | Release | Playback Index | - |
| Transport | Go+ | Playback Index | - |
| Transport | Go- | Playback Index | - |
| Transport | Jump | Playback Index | Cue number[1,32] |
| Transport | Solo | Playback Index | - |
| Transport | Random Solo | Playback Index | - |
| Play State | Toggle | Playback Index | - |
| Play State | Control | Playback Index | - |
| Play State | Inverted Control | Playback Index | - |
| Fader Start | Toggle | Playback Index | - |
| Fader Start | Control | Playback Index | - |
| Fader Start | Inverted Control | Playback Index | - |

B.2 Playback Master

Manipulate the master settings on the Playback page.

| Feature | Function | Parameter 1 | Parameter 2 |
|-----------|----------|-------------|-------------------------|
| Intensity | Set | - | percentage [0%,100%] |
| Intensity | Control | - | - |
| Set Rate | Set | - | percentage [-100%,100%] |
| Set Rate | Control | - | - |
| Fade time | Set | Time | - |
| Fade time | Control | - | - |
| Release | All | - | - |

B.3 Track

Manipulate the settings on the Track page or record a snapshot.

| Feature | Function | Parameter 1 | Parameter 2 |
|---------------|-----------------|-------------|-------------|
| Program | Stop | - | - |
| Program | Record | Track Index | - |
| Program | Erase | Track Index | - |
| Intensity Map | Clear | - | - |
| Intensity Map | Capture DMX | - | - |
| Intensity Map | Capture Art-Net | - | - |
| Intensity Map | Capture sACN | - | - |
| Snapshot | Clear | - | - |
| Snapshot | Capture DMX | - | - |
| Snapshot | Capture Art-Net | - | - |
| Snapshot | Capture sACN | - | - |

B.4 UDP

Send a UDP message via the network. Specify the recipient in Parameter 2. For example "192.168.1.11:7000".

| Feature | Function | Parameter 1 | Parameter 2 |
|---------------|----------|-----------------------|-------------------|
| Send Float | Set | floating point number | IP address & port |
| Send Float | Control | - | IP address & port |
| Send Unsigned | Set | positive number | IP address & port |
| Send Unsigned | Control | - | IP address & port |
| Send Bool | Set | true or false | IP address & port |
| Send Bool | Control | - | IP address & port |
| Send String | Set | text string | IP address & port |
| Send String | Control | - | IP address & port |
| Wake On Lan | Set | MAC Address | IP address & port |

Please note that string in parameter 1 has a maximum length of 31 characters.

When using the Wake On Lan feature parameter 1 should contain the MAC Address of system's NIC (Network Interface Controller) you wish to wake up. The recommended value for parameter 2 is 255.255.255.255:7. This broadcasts the message to the whole network at port 7 which is most commonly used for Wake On Lan.

B.5 OSC

Send an OSC message via the network. The OSC recipients are specified in the Settings page.

| Feature | Function | Parameter 1 | Parameter 2 |
|---------------|----------|-------------|-----------------------|
| Send Float | Set | URI | floating point number |
| Send Float | Control | URI | - |
| Send Unsigned | Set | URI | positive number |
| Send Unsigned | Control | URI | - |
| Send Bool | Set | URI | true or false |
| Send Bool | Control | URI | - |
| Send String | Set | URI | String of characters |
| Send String | Control | URI | - |
| Colour | Set | URI | RGB colour |
| Colour | Control | URI | - |

Please note that string in parameter 1 has a maximum length of 31 characters, including the compulsory leading '/' sign.

B.6 DMX

Manipulate the DMX levels. These are the levels that can also be send out via Art-Net or sACN.

| Feature | Function | Parameter 1 | Parameter 2 |
|--------------|------------------|-------------------|------------------|
| Universe | Control HTP | Universe # | - |
| Universe | Control LTP | Universe # | - |
| Universe | Control Priority | Universe # | - |
| Universe | Clear | Universe # | - |
| Set Channel | Set | DMX Channel | DMX Value |
| Set Channel | Toggle | DMX Channel | - |
| Set Channel | Control | DMX Channel | - |
| Set Channel | Inverted Control | DMX Channel | - |
| Set Channel | Decrement | DMX Channel | - |
| Set Channel | Increment | DMX Channel | - |
| Bump Channel | Set | DMX Channel | DMX Value |
| Bump Channel | Control | DMX Channel | - |
| Clear All | Set | - | - |
| RGB | Set | DMX Address | RGB Colour Value |
| RGB | Control | DMX Address | - |
| XY | Control | DMX Address | - |
| XxYy | Control | DMX Address | - |
| Ii | Set | DMX Address | Intensity Value |
| Ii | Control | DMX Address | - |
| Block | Control | DMX Start Address | DMX End Address |

B.7 MIDI

Send a MIDI message.

| Feature | Function | Parameter 1 | Parameter 2 |
|---------|----------|--------------|-------------|
| Send | Set | MIDI Address | MIDI Value |
| Send | Control | MIDI Address | - |

B.8 MMC

Send a MMC (MIDI Machine Control) message via the MIDI port.

| Feature | Function | Parameter 1 | Parameter 2 |
|---------|---------------|--------------|-------------|
| Send | Start | MIDI Channel | - |
| Send | Stop | MIDI Channel | - |
| Send | Restart | MIDI Channel | - |
| Send | Pause | MIDI Channel | - |
| Send | Record | MIDI Channel | - |
| Send | Deferred Play | MIDI Channel | - |
| Send | Record Exit | MIDI Channel | - |
| Send | Record Pause | MIDI Channel | - |
| Send | Eject | MIDI Channel | - |
| Send | Chase | MIDI Channel | - |
| Send | Fast Forward | MIDI Channel | - |
| Send | Rewind | MIDI Channel | - |
| Send | Goto | MIDI Channel | Time |

B.9 GPI

Manipulate the GPI port.

| Feature | Function | Parameter 1 | Parameter 2 |
|---------------|----------|-------------|-------------|
| Sample Binary | Set | - | - |
| Refresh | Set | - | - |

B.10 Time Server

Reach out to the Time Server specified in the Settings page.

| Feature | Function | Parameter 1 | Parameter 2 |
|---------|----------|-------------|-------------|
| Refresh | Set | - | - |

B.11 Variable

Manipulate one of the 10 variables.

| Feature | Function | Parameter 1 | Parameter 2 |
|---------------|----------------------|-------------|--------------------------------|
| Set Value | Set | Variable # | Number in the range of [0,255] |
| Set Value | Toggle | Variable # | Number in the range of [0,255] |
| Set Value | Control | Variable # | - |
| Set Value | Inverted Control | Variable # | - |
| Set Value | Decrement | Variable # | - |
| Set Value | Increment | Variable # | - |
| Set Value | Stop Continuous | Variable # | - |
| Set Value | Continuous Decrement | Variable # | Delta |
| Set Value | Continuous Increment | Variable # | Delta |
| Set Value | Control Scaled | Variable # | - |
| Set Value | Control Offset | Variable # | - |
| Refresh | Set | Variable # | - |
| Single Dimmer | Set | Variable # | Delta |
| Curve | Control | Variable # | Curve |
| Curve | Inverted Control | Variable # | Curve |

Variables are further explained on page 60.

The Single Dimmer feature is used to increase or decrease a level by using only one switch. When controlling this task through a GPI action, then closing the GPI will increase or decrease the level. Opening the GPI port will freeze on the current level. This feature is useful for controlling an intensity will just one button.

B.12 System

Miscellaneous tasks.

| Feature | Function | Parameter 1 | Parameter 2 |
|---------|----------|-------------|-------------|
| Blink | Set | On or Off | - |
| Blink | Toggle | - | - |
| Blink | Control | - | - |

The Blink feature controls the LED on the unit as seen in figure 5.2.

B.13 Action

Use the Link feature to have one action trigger another action.

| Feature | Function | Parameter 1 | Parameter 2 |
|---------|----------|-------------|-------------|
| Link | Set | Action | - |

B.14 Action-list

Manipulate an action-list.

| Feature | Function | Parameter 1 | Parameter 2 |
|---------|------------------|-------------|-------------|
| Enable | Set | Action-list | On or Off |
| Enable | Toggle | Action-list | - |
| Enable | Control | Action-list | - |
| Enable | Inverted Control | Action-list | - |

B.15 Randomiser

Trigger the Randomizer to generate a new random number.

| Feature | Function | Parameter 1 | Parameter 2 |
|---------|----------|---------------|---------------|
| Refresh | Set | Minimum value | Maximum value |

The Randomizer functionality is discussed on page 60.

B.16 Timer

Manipulate on of the four internal timers.

| Feature | Function | Parameter 1 | Parameter 2 |
|-----------|----------|-------------|-------------|
| Playstate | Start | Timer # | - |
| Playstate | Stop | Timer # | - |
| Playstate | Restart | Timer # | - |
| Time | Set | Timer # | Time |

B.17 Timecode

Manipulate the internal timecode generator.

| Feature | Function | Parameter 1 | Parameter 2 |
|-----------|----------|-------------|-------------|
| Playstate | Start | - | - |
| Playstate | Stop | - | - |
| Playstate | Restart | - | - |
| Playstate | Pause | - | - |
| Time | Set | - | Time |

Appendix C

Templates

This appendix discusses the templates provided in the Show Control page.

| Template | Description |
|---------------------------|--|
| Receiving DMX | Receiving DMX on all ports. DMX properties in the Settings page have to be configured accordingly. |
| Receiving Art-Net | Receiving DMX on all universes. Art-Net properties in the Settings page have to be configured accordingly. |
| Receiving sACN | Receiving sACN on all universes. sACN properties in the Settings page have to be configured accordingly. |
| DMX ->Playbacks | DMX port A (channel 1-6) will control the intensity of all six playbacks. When a channel is >0% it will activate the playback, when set 0% it the playback will be released. |
| OSC ->Playbacks | A selection of OSC Commands will control Go+, Go-, Release, Intensity and Rate for all six playbacks. |
| UDP ->Playbacks | A selection of UDP Commands will control Go+, Go- and Release for all six playbacks. |
| Art-Net ->Playbacks | Art-Net input universe A will control the intensity of all six playbacks. When a channel >0% it will activate the playback, when set 0% it the playback will be released. |
| Kiosc ->Playbacks | Creates a Kiosc layout with buttons and sliders to operate the six playbacks. |
| DMX ->MIDI | Translates 8 channels from DMX port A into outgoing MIDI ControlChange messages in MIDI channel 1. DMX port A should be configured as an input in the Settings page. |
| Digital GPI ->4 Playbacks | The GPI ports will control the Playstate of playbacks 1-4 |

Appendix D

API

The CueCore2 is pre-programmed to make its internal functionality available via OSC, TCP, UDP and HTTP. There is a simple API implemented for each protocol. Notwithstanding these API's, it is possible to create your own OSC, TCP and UDP implementation in the Show Control page.

The API is originally designed for external equipment to control the CueCore2, however, it is also capable to send information back. This feedback mechanism is discussed at the end of this chapter, on page 112.

D.1 OSC

The following table uses playback #1 as an example. The number '1' can be replaced by any number in the range of [1,6].

| URI | Parameter | Description |
|----------------------|-----------|---|
| /core/pb/1/go+* | - | Jump to the next cue in playback #1 |
| /core/pb/1/go- | - | Jump to the previous cue in playback #1 |
| /core/pb/1/jump | integer | Jump to a specific cue in playback #1 |
| /core/pb/1/release | - | Release the playback |
| /core/pb/1/intensity | float | Set the playback's intensity |
| /core/pb/1/rate | float | Set the playback's intensity |
| /core/pb/release | - | Release all playbacks |
| /core/pb/intensity | float | Set the master intensity |
| /core/pb/rate | float | Set the master rate |
| /core/pb/fade | string | Set the master fade time |
| /core/pb/solo | integer | Start a solo playback |

* This command does not work when the parameter is off or a 0 value.

The following table uses track #1 as an example. The number '1' can be replaced by any number in the range of [1,128].

| URI | Parameter | Description |
|--------------------------|-----------|--|
| /core/tr/select | integer | Select a track |
| /core/tr/erase | - | Erase the selected track |
| /core/tr/record | - | Start recording the selected track |
| /core/tr/stop | - | Stop recording |
| /core/tr/1/erase | - | Erase track #1 |
| /core/tr/1/record | - | Start recording track #1 |
| /core/tr/snapshot/dmx | - | Record a snapshot of the current DMX input |
| /core/tr/snapshot/artnet | - | Record a snapshot of the current Art-Net input |
| /core/tr/snapshot/sacn | - | Record a snapshot of the current sACN input |

The following table only applies when Internal is selected as timecode in at the settings page.

| URI | Parameter | Description |
|------------------|-----------|-------------------------------|
| /core/tc/start | - | Start the internal timecode |
| /core/tc/stop | - | Stop the internal timecode |
| /core/tc/restart | - | Restart the internal timecode |
| /core/tc/pause | - | Pause the internal timecode |
| /core/tc/set | string | Set the internal timecode |

The following table uses actionlist #1 as an example. The number '1' can be replaced by any number in the range of [1,8]. The table also uses action #2 as an example. The number '1' can be replaced by any number in the range of [1,48].

| URI | Parameter | Description |
|----------------------|--------------------|--|
| /core/al/1/2/execute | bool/float/integer | Execute action #2 inside action list #1 |
| /core/al/1/enable | bool | Set the 'enable' checkbox for action list #1 |

The following table uses timer #1 as an example. The number '1' can be replaced by any number in the range of [1,4].

| URI | Parameter | Description |
|--------------------|-------------|---------------------------------|
| /core/tm/1/start | - | Start timer #1 |
| /core/tm/1/stop | - | Stop timer #1 |
| /core/tm/1/restart | - | Restart timer #1 |
| /core/tm/1/pause | - | Pause timer #1 |
| /core/tm/1/set | time-string | Set timer #1 at the time-string |

The following table uses variable #1 as an example. The number '1' can be replaced by any number in the range of [1,8].

| URI | Parameter | Description |
|--------------------|-----------|---|
| /core/va/1/set | integer | Set the value of variable #1 |
| /core/va/1/refresh | - | Refresh variable #1; a trigger will be generated as if the variable changed value |
| /core/va/refresh | - | Refresh all variables; triggers will be generated |

The following table shows how to active miscellaneous functions.

| URI | Parameter | Description |
|-------------|-----------|---|
| /core/dmx/1 | integer | Set the value of a DMX channel |
| /core/blink | - | Momentarily flashes the CueCore2's LED |
| /core/hello | - | The unit will reply with the same Hello message |

D.2 TCP & UDP

TCP (Transmission Control Protocol) is a protocol for sending messages across an Ethernet network. TCP provides reliable, ordered and error-checked delivery of messages between programs running on computers connected to a local area network, intranet or the public Internet.

UDP (User Datagram Protocol) is a simple protocol for sending message across the network. It does not provide any error checking. Although UDP is a bit faster than TCP, it is less secure.

Typically either TCP or UDP is supported by various media devices like video projectors and show controllers.

The functionality within the CueCore2 can controlled by using the following ASCII strings (human readable text) messages:

The following table uses playback #1 as an example. The number '1' can be replaced by any number in the range of [1,6].

| String | Description |
|-----------------------------|---|
| core-pb-1-go+ | Jump to the next cue in playback #1 |
| core-pb-1-go- | Jump to the previous cue in playback #1 |
| core-pb-1-jump=<integer> | Jump to a specific cue in playback #1 |
| core-pb-1-release | Release the playback |
| core-pb-1-intensity=<float> | Set the playback's intensity |
| core-pb-1-rate=<float> | Set the playback's intensity |
| core-pb-release | Release all playbacks |
| core-pb-intensity=<float> | Set the master intensity |
| core-pb-rate= <float> | Set the master rate |
| core-pb-fade=<text> | Set the master fade time |
| core-pb-solo=<integer> | Start a solo playback |

The following table uses track #1 as an example. The number '1' can be replaced by any number in the range of [1,128].

| String | Description |
|--------------------------|--|
| core-tr-select=<integer> | Select a track |
| core-tr-erase | Erase the selected track |
| core-tr-record | Start recording the selected track |
| core-tr-stop | Stop recording |
| core-tr-1-erase | Erase track #1 |
| core-tr-1-record | Start recording track #1 |
| core-tr-snapshot-dmx | Record a snapshot of the current DMX input |
| core-tr-snapshot-artnet | Record a snapshot of the current Art-Net input |
| core-tr-snapshot-sacn | Record a snapshot of the current SACN input |

The following table only applies when Internal is selected as timecode in at the settings page.

| String | Description |
|------------------------|-------------------------------|
| core-tc-start | Start the internal timecode |
| core-tc-stop | Stop the internal timecode |
| core-tc-restart | Restart the internal timecode |
| core-tc-pause | Pause the internal timecode |
| core-tc-set= <string > | Set the internal timecode |

The following table uses actionlist #1 as an example. The number '1' can be replaced by any number in the range of [1,8]. The table also uses action #2 as an example. The number '1' can be replaced by any number in the range of [1,48].

| String | Description |
|---------------------------|--|
| core-al-1-2-execute=<arg> | Execute action #2 inside action list #1 |
| core-al-1-enable=<bool> | Set the 'enable' checkbox for action list #1 |

The following table uses timer #1 as an example. The number '1' can be replaced by any number in the range of [1,4].

| String | Description |
|----------------------|---------------------------------|
| core-tm-1-start | Start timer #1 |
| core-tm-1-stop | Stop timer #1 |
| core-tm-1-restart | Restart timer #1 |
| core-tm-1-pause | Pause timer #1 |
| core-tm-1-set=<text> | Set timer #1 at the time-string |

The following table uses variable #1 as an example. The number '1' can be replaced by any number in the range of [1,8].

| String | Description |
|-------------------------|---|
| core-va-1-set=<integer> | Set the value of variable #1 |
| core-va-1-refresh | Refresh variable #1; a trigger will be generated as if the variable changed value |
| core-va-refresh | Refresh all variables; triggers will be generated |

The following table shows how to activate miscellaneous functions.

| String | Description |
|----------------------|---|
| core-dmx-1=<integer> | Set the value of a DMX channel |
| core-blink | Momentarily flashes the CueCore2's LED |
| core-hello | The unit will reply with the same Hello message |

D.3 HTTP

HTTP (Hyper Text Transfer Protocol) is the standard protocol to access web pages. It can also be used to control the CueCore2, using the URLs listed below.

The following table uses playback #1 as an example. The number '01' can be replaced by any number in the range of [01,06].

| Description | URL | Parameter Range | Example |
|------------------------|----------------|-----------------|--|
| Playback Go Forward | /ajax/pbXX/go+ | - | http://192.168.1.10/ajax/pb01/go+ |
| Playback Go Back | /ajax/pbXX/go- | - | http://192.168.1.10/ajax/pb01/go- |
| Playback Jump | /ajax/pbXX/jmp | [1, 32] | http://192.168.1.10/ajax/pb01/jump |
| Release playback | /ajax/pbXX/rel | - | http://192.168.1.10/ajax/pb01/release |
| Set playback intensity | /ajax/pbXX/int | [0.0, 1.0] | http://192.168.1.10/ajax/pb01/intensity=0.55 |
| Set playback rate | /ajax/pbXX/rat | [-1.0, 1.0] | http://192.168.1.10/ajax/pb01/rate=0.55 |
| Release all playbacks | /ajax/rel | - | http://192.168.1.10/ajax/release |
| Set master intensity | /ajax/int | [0.0, 1.0] | http://192.168.1.10/ajax/intensity=0.55 |
| Set master rate | /ajax/rat | [-1.0, 1.0] | http://192.168.1.10/ajax/rate=0.55 |
| Set master fade | /ajax/fad | text | http://192.168.1.10/ajax/fade=3s |
| Start a solo playback | /ajax/pb/sol | [1, 6] | http://192.168.1.10/ajax/pb/sol=3 |

| Description | URL | Parameter Range | Example |
|------------------------------|-----------------------|-----------------|--|
| Record a snapshot of DMX | /ajax/tr/snapshot/dmx | - | http://192.168.1.10/ajax/track/snapshot/dmx |
| Record a snapshot of Art-Net | /ajax/tr/snapshot/dmx | - | http://192.168.1.10/ajax/track/snapshot/artnet |
| Record a snapshot of sACN | /ajax/tr/snapshot/dmx | - | http://192.168.1.10/ajax/track/snapshot/sacn |

The following table uses actionlist #1 as an example. The number '01' can be replaced by any number in the range of [01,08].

| Description | URL | Parameter Range | Example |
|-------------------|------------------|-----------------|--|
| Execute action | /ajax/alXX/2/exe | - | http://192.168.1.10/ajax/al01/2/exe=true |
| Enable actionlist | /ajax/alXX/ena | true/false | http://192.168.1.10/ajax/al01/enable=false |

| Description | URL | Parameter Range | Example |
|-------------|-----------|-----------------|--------------------------------|
| Blink LED | /ajax/bli | - | http://192.168.1.10/ajax/blink |

You can send your HTTP GET requests to port 80.

D.4 MSC

The CueCore2 can also be remote controlled via MIDI Show Control. The following commands are available.

| Command | Description | Parameters |
|------------|---|---|
| Go | Jump to a cue of a playback. | - |
| TimedGo | Jump to a cue of a playback with a fade time. | Playback=qlist Cue=qnumber fadetime=timecode |
| GoOff | Release a playback. | if qnumber is the active cue or qnumber equals 0xFF |
| GoJamClock | Jump to a cue of a playback and start internal time code. | Playback=qlist Cue=qnumber |
| StandbyFw | Jump to a cue of a playback and then pause the playback. | Playback=qlist Cue=qnumber |
| StandbyBw | Jump to a cue of a playback and then pause the playback. | Playback=qlist Cue=qnumber |

Commands for playback master:

| Command | Description | Parameters |
|---------|--|-------------|
| AllOf | Release all | - |
| Reset | Release all | - |
| Stop | pause all playbacks which are playing | - |
| Load | Jump to a cue in all playbacks and then pause all playbacks. | Cue=qnumber |

Commands for the internal timecode:

| Command | Description | Parameters |
|------------|--|------------|
| StartClock | Start internal timecode | - |
| StopClock | Stop / pause the internal timecode | - |
| ZeroClock | Set the internal timecode to 00:00:00.00 and start | - |
| SetClock | Set the internal timecode to a value | - |
| ChaseOn | Set the timecode source to MTC | - |
| ChaseOff | Set the timecode source to internal | - |

D.5 Feedback

The CueCore2 is able to send feedback to external equipment using its API, so called 'clients'. The CueCore2 keeps a memory of the last four OSC clients and last four UDP clients. The clients will automatically receive updates on several playback related state changes.

Below is a table listing the messages the CueCore2 will send back to its clients.

| OSC | UDP |
|----------------------|---------------------|
| /core/pb/1/intensity | core-pb-1-intensity |
| /core/pb/1/rate | core-pb-1-rate |
| /core/pb/intensity | core-pb-intensity |
| /core/pb/rate | core-pb-rate |
| /core/pb/fade | core-pb-fade |
| /core/pb/1/active | core-pb-1-active |
| /core/pb/1/cue | core-pb-1-cue |
| /core/hello | core-hello |

The `hello` command is ideal for polling the device; it allows you to verify that the CueCore2 is online at the IP address and port that you expect.

A power-cycle will clear the internal client lists.

Consider programming custom action in the show control when additional feedback functionality is required.

Index

- CueCore1, 6, 8
- CueCore2, 8
- CueluxPro Mode, 38
- vManager, 79
- 19 rack, 31

- Action, 56, 101
- Action list, 57
- Actionlist, 94
- Android, 82
- API, 105
- Art-Net, 13, 76, 90
- Auto-sensing, 34

- Backup, 80
- Battery, 8
- Blink, 71, 81
- Bopla, 31
- Bounce, 52
- Box contents, 10

- Calibrate, 77
- Capture, 44
- Comparison, 8
- Console, 42
- Contact-closure, 15
- Control, 59
- Conversion, 63
- Cue, 49, 52

- Date, 81
- Daylight Saving Time, 72
- Destination IP, 76
- DHCP, 16, 34, 71
- DIN Rail, 13, 31
- DMX, 76
- DMX Input, 88
- DMX-512, 12
- Duration, 42, 54

- Execute, 59

- Factory Defaults, 81
- Fade, 54
- Feature, 95
- Feedback, 112
- Firmware, 80
- Flank, 59, 86
- Forum, 11
- Forward, 74
- FPS, 42
- Function, 95

- General, 71
- Go+, 54
- Go-, 54
- GPI, 14, 77
- Greenwich Mean Time, 73

- Halt, 54
- Home page, 37
- HTP, 50, 65
- HTTP, 110

- Intensity, 52
- Intensity Map, 47
- iOS, 82
- IP, 71

- Kensington, 32
- KiNet, 13, 75
- Kiosc, 84, 91

- Label, 71
- Last Server Poll, 36
- LED, 34
- Limitations, 9
- Location, 73
- Lock, 32
- Loop, 52
- LTC, 16
- LTP, 50, 65

- macOS, 82

Master IP, 36
 Memory, 11
 MFade, 52
 MIDI, 15, 88
 MIDI Show Control, 111
 MMC, 16
 Mode, 36
 Modes, 37
 Monitor, 68
 Mounting, 31
 MSC, 16, 111
 MTC, 15

 Network Interface Controller, 97
 NTP, 16, 36, 72
 Number of Tracks, 71

 Off, 52
 OSC, 14, 74, 90, 105

 Password, 71
 Playback, 49
 PoE, 32
 Polarity, 32
 Port, 75
 Port Forwarding, 36, 71
 Potentiometer, 15
 Power, 32
 Precedence, 50
 Priority, 50, 65
 Protocol Conversion, 63

 QuadCore, 8

 Rackmount, 31
 Random, 52
 Randomizer, 60, 92, 102
 Rate, 52
 RdmSplitter, 13
 Reboot, 82
 Recorder, 44
 Release, 52, 54
 Repeat, 52
 Reset button, 35
 Router, 71
 RTC, 72
 RTC Calibration, 81

 sACN, 13, 77, 91
 Sample Rate, 46
 Share Analytics, 71

 Show Control, 56
 Single Dimmer, 101
 Size, 42
 Slave, 71
 Slave Mode, 38
 SMPTE, 16
 Snap, 82
 Source, 57
 Stand-alone Mode, 37
 Subnet mask, 34
 Sunrise, 73
 Sunset, 73
 System, 92, 101

 Task, 57
 Task type, 95
 TC, 52
 TC Offset, 52
 TC offset, 45
 TCP, 13, 75, 90, 107
 TCP/IP, 75
 Template, 60
 Templates, 104
 Time, 81
 Timecode, 74, 91, 102
 Timer, 94, 102
 Timers, 60
 Timespan, 78
 Track, 41
 Track Preview, 43
 Trigger, 57
 Trigger type, 86

 Ubuntu, 82
 UDP, 14, 75, 89, 107
 Uptime, 35
 URI, 90
 UTC, 72

 Variable, 93
 Variables, 60
 VPN, 36

 Wake On Lan, 97
 Windows, 82

 XLR, 46