



## SOPORTE PANTALLA LED

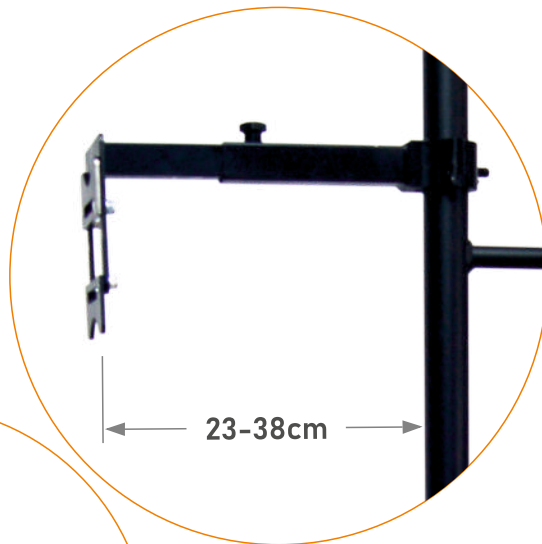
## STACKED LED SUPPORT

Altura Height	2.11 m* (LWS-2) 7.25 ft
Superficie de trabajo Work surface	100x106/110/114 cm (3.28x3.48/3.6/3.74 ft)
Peso Weight	36 kg (LWS-2) 80 lb
Material Material	Aluminio 6082 T6 + Acero Aluminium 6082 T6 + Steel
Acabado Finish	Negro Black

## LWS-2

\*Altura según tramos. Consultar medidas disponibles y accesorios  
\*Height according to sections. Check available sizes and accessories

soportes universales  
ajustables en altura  
y profundidad



23-38cm

side entry clamp with the  
universal connection  
plate mounted

Max.  
100mm

Max. 100mm

211cm

2 estabilizadores  
ajustables frontales + 1  
posterior para nivelar el  
conjunto.

CONTRAPESOS POR METRO LINEAL  
COUNTERWEIGHT PER METER

Modelo Model	Altura Height (m)	Carga distribuida Distributed load (kg/ml)	Contrapeso Counterweight (kg/ml)
LWS-2	2	34	32
LWS-3	3	98	93
LWS-4	4	169	160

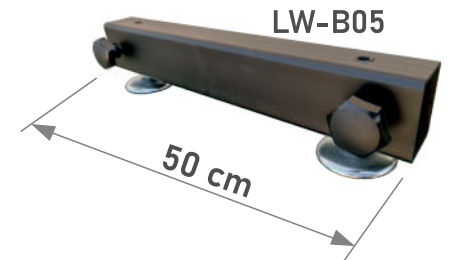
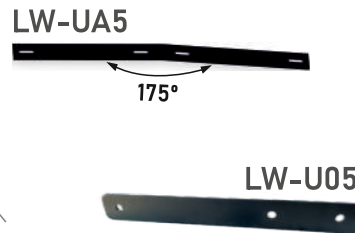
2 adjustable front spindles + 1  
adjustable back spindle, you  
can safely level the system.

#### LWS-2



#### PESOS COMPONENTES COMPONENTS WEIGHTS

Modelo Model	Descripción Description	Peso (kg) Weight
LW-T1	Truss paralelo especial 1m negro 1m black ladder truss section	4
LW-B05	Base frontal 0,5 m con estabilizadores ajustables Front 0,5 m base with stabilisers	5
LW-B1	Base frontal 1 m con estabilizadores ajustables Front 1 m base with stabilisers	9
LW-B2	Base trasera con estabilizador ajustable + conos truss Rear base with stabilisers & truss eggs	13
LW-AR1	Brazo soporte ajustable pantalla Adjustable screen support arm	2
LW-U1	Pletina unión bases LW-B1 Connection plate for LW-B1 bases	2
LW-UA5	Pletina unión bases LW-B1 a 5° (175° o 185°) Connection plate for LW-B1 bases 5° (175° o 185°)	2



**Añade tantos módulos y paneles como necesites conectándolos con pletinas de unión.**

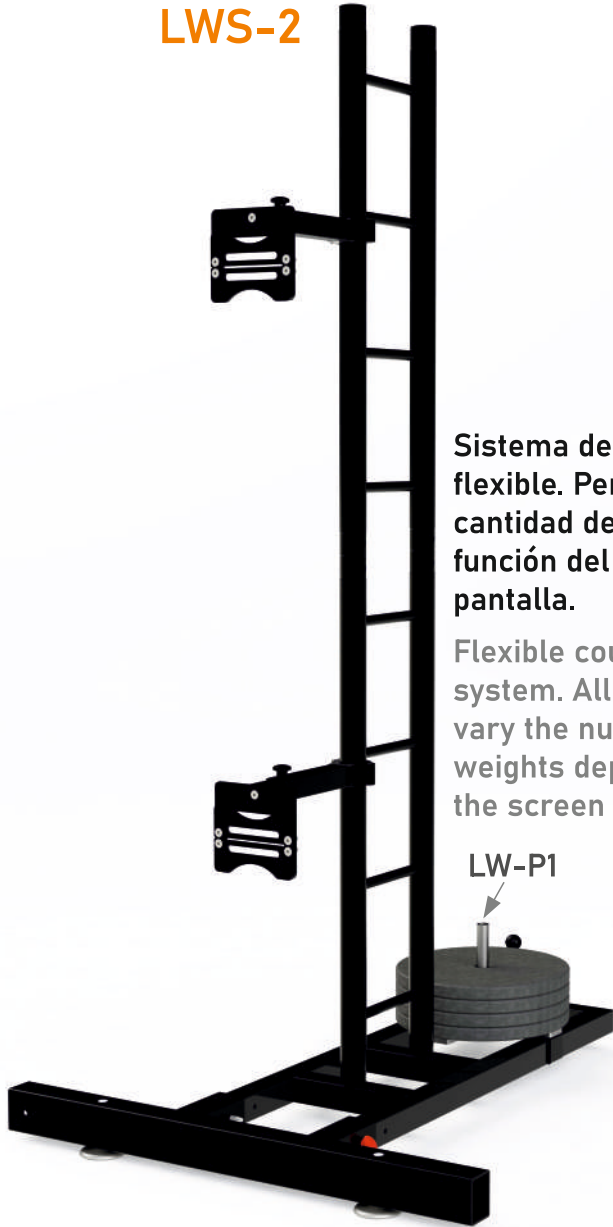
By using connection plate, you can easily extend you screen with another row of panels.



### STACKED LED SUPPORT

#### ACCESORIOS OPCIONALES OPTIONAL ACCESSORIES

**LWS-2**

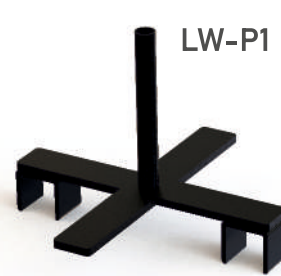


**Sistema de contrapesos flexible. Permite variar la cantidad de pesos en función del tamaño de pantalla.**

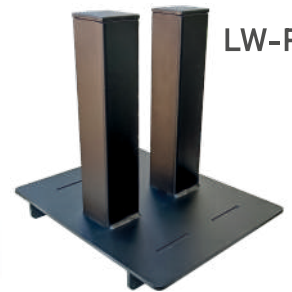
**Flexible counterweight system. Allows you to vary the number of weights depending on the screen size.**

Modelo Model	Descripción Description
LW-P1	Soporte contrapesos con barra Ø25mm* Counterweight support with Ø25mm bar*
LW-P2	Soporte contrapesos estándar 20kg* Standard 20kg counterweight support*
LW-AR2	Barra de refuerzo telescópica con abrazaderas Telescopic Reinforcement bar between stacks
LW-AR3	Barra de refuerzo fija con abrazaderas Reinforcement bar between stacks
CWA-20	Contrapesos estándar 20kg para LW-P2 Standard 20kg counterweight for LW-P2

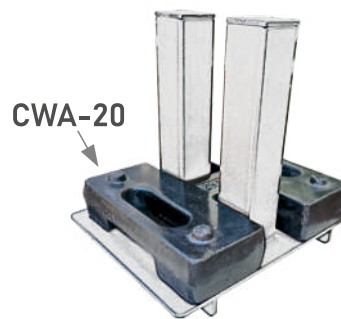
\*Pesos NO incluidos · Weights not included



LW-P1



LW-P2



CWA-20



LW-AR2



LW-AR3



LW-P2



### STACKED LED SUPPORT

#### MEDIDAS MEASURES

	LWS-1	LWS-2	LWS-3	LWS-4
Altura (m) <i>Height (ft)</i>	1.11 3.64	2.11 6.92	3.11 10.20	4.11 13.48
Peso (kg) <i>Weight (lb)</i>	28 62	36 79	44 97	52 115
Superficie de trabajo ancho x profundo (m) <i>Work surface width x depth (ft)</i>	100 x 106/110/114 3.28 x 3.48/3.6/3.74			

#### COMPONENTES INCLUIDOS INCLUDED COMPONENTS

Ref. Ref.	Descripción Description	LWS-1 Uds. Units	LWS-2 Uds. Units	LWS-3 Uds. Units	LWS-4 Uds. Units
LW-T1	Truss paralelo especial 1m negro <i>1m black ladder truss section</i>	1	2	3	4
LW-B1	Base frontal con estabilizadores ajustables <i>Front base with stabilisers</i>	1	1	1	1
LW-B2	Base trasera con estabilizador ajustable + conos truss <i>Rear base with stabilisers &amp; truss eggs</i>	1	1	1	1
LW-AR1	Brazo soporte ajustable pantalla <i>Adjustable screen support arm</i>	1	2	3	4
LW-U1	Pletina unión bases LW-B1 <i>Connection plate for LW-B1 bases</i>	1	1	1	1

