



**Dance floor frame
LED Screen User Manual**

audio/effetti®

Contents

- CAUTION 4
- PREFACE 8
- Chapter 1 Display mounting back bracket 9
 - 1.1 Product size 10
 - 1.2 Product drawing 10
- Chapter 2 Installation instructions 11
 - 2.1 Connections between frames 11
 - 2.2 Screen install to the frames 15
 - 2.3 LED Screen Maintenance 16
- Chapter 3 Instructions for packing 17
- Chapter 4 Frequently Questions for LED Screen 18
 - 4.1 Software Questions 18
 - 4.2 Hardware Questions 19
- Chapter 5 LED Screen Maintenance 20

CAUTION

Warning: This is a CALSS A-level product. In the living environment, this product may cause radio interference. In this case, the user may be required to take practical actions for the interference.



Caution 1

In order to avoid any physical damage, please read carefully the User Manual

before connecting the switches.

1. LED screen should only be operated by trained professionals.
2. Do not expose any part of the LED screen to naked flame/smoke.
3. Personnel operating the LED screen are advised to wear a safety helmet during operation.
4. Check all the AC power is connected before turning on the switch.
5. Turn off all switches of the LED screen, computer terminals, system box and monitors before performing any maintenance work.
6. Do not touch the power supply when the switch is turned on.

Caution 2

Please read the installation and operation instruction manual carefully in order to make sure the normal lifespan of LED screen and avoid any

damage of electronic components, device driver and lose of data.

1. Turn off all switches including LED , computer terminal, system box and monitor before connecting any cables.
2. Wear Anti-static ring before replacing any electronic components.
3. Do not hot plug any cables connected to computer terminals while the power is running. Ensure that all power is disconnected before unplugging any cable from the ports especially the serial line ports.
4. Avoid the cabinet work under the conditions of high organic solvent detergent (such as kerosene, rust-proof oil, etc).
5. Regular electricity testing is required for indoor LED screen if long time no use. (regular electricity testing standard: at least 2 hours in a week increase gray scale stepwise)
6. The operating/storage environment should conform to the requirements in product parameter&specification sheet, otherwise it will damage the LED screen seriously.
7. In order to ensure the safety, please check the condition of power cables every three months if rental usage, every year if fixing installation.

Caution 3

1. Making sure the LED screen should be properly grounded before working.

Caution 4

1. The usage/storage environment of the display screen must be in accordance with the requirements of the parameter table, otherwise the display screen will be seriously damaged;
2. Avoid working in an environment with high content of organic solvent detergents (such as kerosene, anti-rust oil, etc.).

Caution 5

1. Warnings regarding to the CE certification: This equipment is

compliant with Class A of CISPR 32. In a residential environment this equipment may cause radio interference.

2. Warnings regarding to the FCC certification: This device complies with Part 15 of the FCC Rules.

Operation is subject to the following two conditions:

- (1) this device may not cause harmful interference,
- (2) and (2) this device must accept any interference received, including interference that may cause undesired operation.

Warning: Changes or modifications to this unit not expressly approved by the party responsible for compliance could cause the user can not to operate the equipment.

NOTE: This equipment has been tested and found to comply with the limits for a Class A digital device, pursuant to Part 15 of the FCC Rules. These limits are designed to provide reasonable protection against harmful interference in a residential installation. This equipment generates, uses and radiate radio frequency energy and, if not installed and used in accordance with the instructions, may cause harmful interference to radio communications.

However, there is no guarantee that interference will not occur in a particular installation.

If this equipment does cause harmful interference to radio or television reception, which can be determined by turning the equipment off and on, the user is encouraged to try to correct the interference by one or more of the following measures.

- Reorient or relocate the receiving antenna.
- Increase the separation between the equipment and receiver.
- Connect the equipment into an outlet on a circuit different from that to which the receiver is connected.
- Consult the dealer or an experienced radio/ TV technician for help.

Special statement:

When you need to repair or modify this product, please contact our company in advance.

Warranty period:

In principle, the product warranty period is based on the product warranty period specified on the quotation.

During the warranty period, our company will not guarantee any problems due to the following reasons.

- Problems caused by the user's arbitrarily dismantling the product or failing to perform maintenance properly.
- Problems caused by incorrect transport and storage.
- Problems caused by the use of exceeding the rated parameters of the product.
- Problems caused by improper installation.
- Problems caused by fires, earthquakes, storms, floods, lightning and other natural disasters or riots, wars, radioactivity, etc. and other natural and man made disasters.

Signs of restricted use of hazardous substances in electrical and electronic products:



1. The logo indicates that the environmental protection use period of electronic and electrical products is 10 years;
2. It means that the electrical and electronic products contain certain hazardous substances and can be used with confidence within the environmental protection use period. After the environmental protection period is exceeded, they should enter the recycling system.

Forword

The dance floor frame is made of high-strength aluminum alloy, which has the characteristics of high strength, light weight and good corrosion resistance. The surface of the material has been specially treated to have good dirt resistance and aesthetic consistency. At the same time, it adopts standardized design, easy to install and maintain, and can be adapted to a wide range of sites. The standard dance floor frame size is 1m*1m and weighs 22kg. It can quickly lock and install the magic product without adding positioning pins, saving time and effort. With the adjustment of connecting blocks and Vientiane joints, the flatness of the structure is qualitatively improved to meet the installation requirements of XR floor tile screens.

In order to ensure that the product can be used normally under reasonable conditions and gain your recognition of the product, we will detail the installation and use procedures and precautions for the product. Please read it carefully before installing and debugging the display.

Warm reminder: Unless otherwise specified, the operation methods of all models in this series are the same as in this manual.

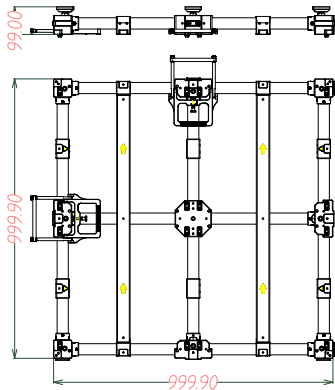
Chapter 1 LED screen dance floor frame

Features

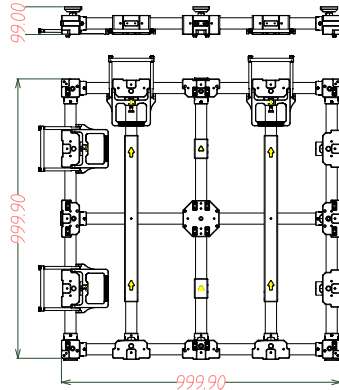
- Dance floor frame use 1m*1m units, making on-site splicing faster. The interconnection between the floor tile rack and the floor tile rack adopts a quick snap lock structure, which saves time and effort. Perfectly matched with Magic Stage series products, the cabinet is fixed using positioning blocks. The blocks are made of special material and will not scratch the surface of the cabinet during installation, thus better protecting the cabinet.
- The original tapered pin positioning method is reserved during design.
- The height of the foot can be adjusted from the front for more convenient operation. The floor tile frame of each unit is height-adjustable at 9 points, and the foot cup adopts a universal structure, which is more suitable for sites with uneven ground, and the force at each point is more even.
- The dance floor frame of each cabinet power box is designed with support strips to better protect the cabinet power box part.
- The dance floor frame has the expected front connecting piece position in each direction to better ensure the flatness of the cabinet installation surface.
- The cabinet crossing position is designed to make installation more convenient and faster.
- The dance floor frame are interconnected with each other, and a horizontal calibration structure is added to the side to better ensure the flatness of the overall installation surface after the floor tile rack units are connected.
- The dance floor frame quick lock adds a safety pin structure, making it safer and more reliable to use.

1.1 Product Size

Single-lock dance floor frame

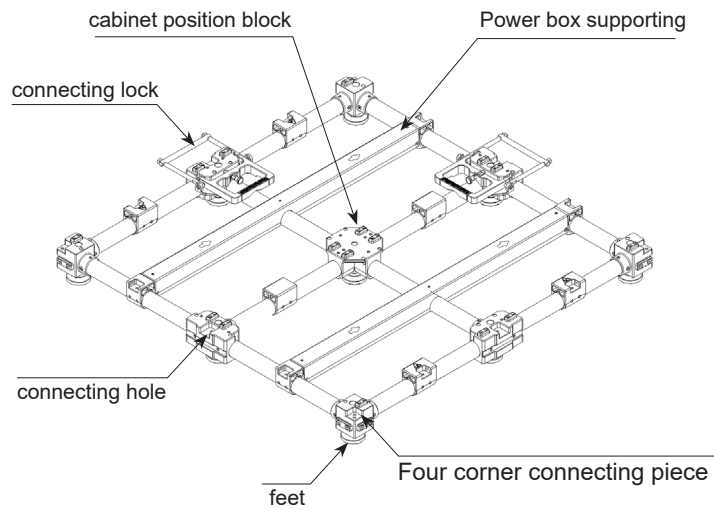


Double-lock dance floor frame



Dance floor frame use 1m*1m

1.2 Product Structure



Chapter 2 Installation Instructions

2.1 Floor tile bracket interconnection

Step 1: Adjust all the foot cups on the floor tile bracket to the minimum stroke position, and then place it in the installation area. Please note that the direction arrow on the floor tile bracket must be consistent with the direction of the display screen to be installed (Figure 2.1.1).

Step 2: Align the second floor tile bracket with the installed floor tile bracket direction mark, align the shelf with the shelf position, and then connect the hasp lock (Figure 2.1.2).

Step 3: Repeat the operation of step 2 to complete the installation as shown in (Figure 2.1.3). (Take 3m*2m size as an example).

Step 4: Fix connecting piece A to the adjacent floor tile brackets at the four corners with metric screws M6*16 (Figure 2.1.4).

Step 5: Fix connecting piece B to the adjacent hasp lock positions on both sides with metric screws M6*16 (Figure 2.1.5).

Step 6: Check whether the foot cups of the floor tile stand are in full contact with the ground. If there are gaps, use an 8mm hex wrench to adjust the height of the foot cups to ensure that the foot cups are in full contact with the ground (each floor tile stand has 9 feet cup), the floor tile rack installation is completed (Figure 2.1.6).

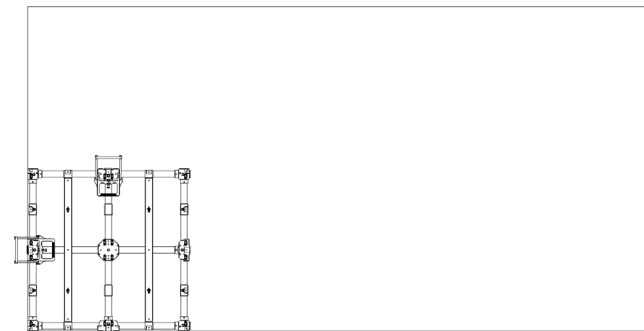


Figure 2.1.1

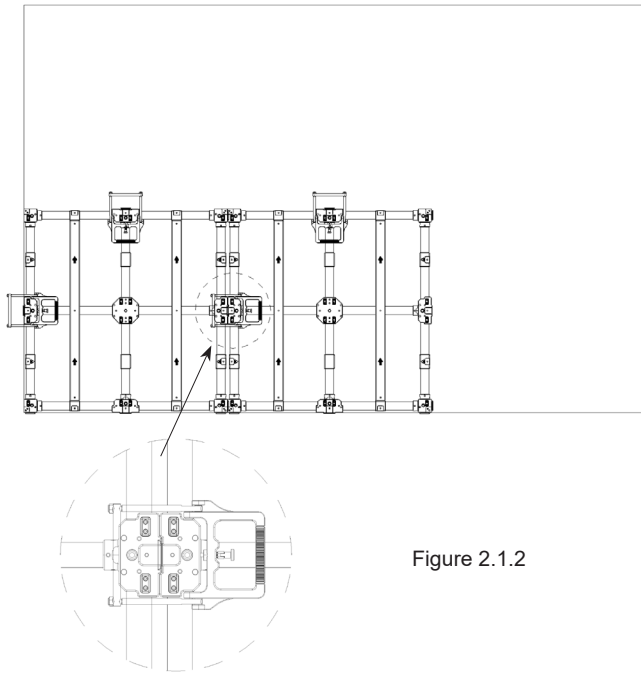


Figure 2.1.2

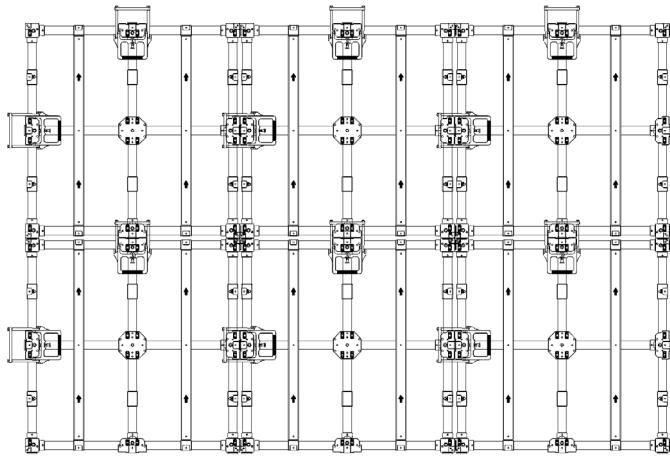


Figure 2.1.3

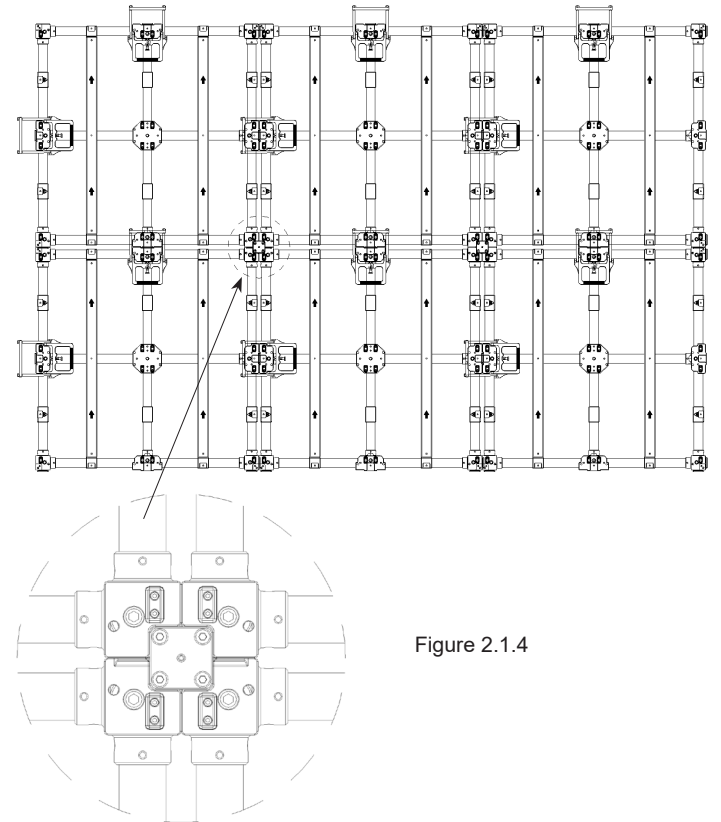


Figure 2.1.4

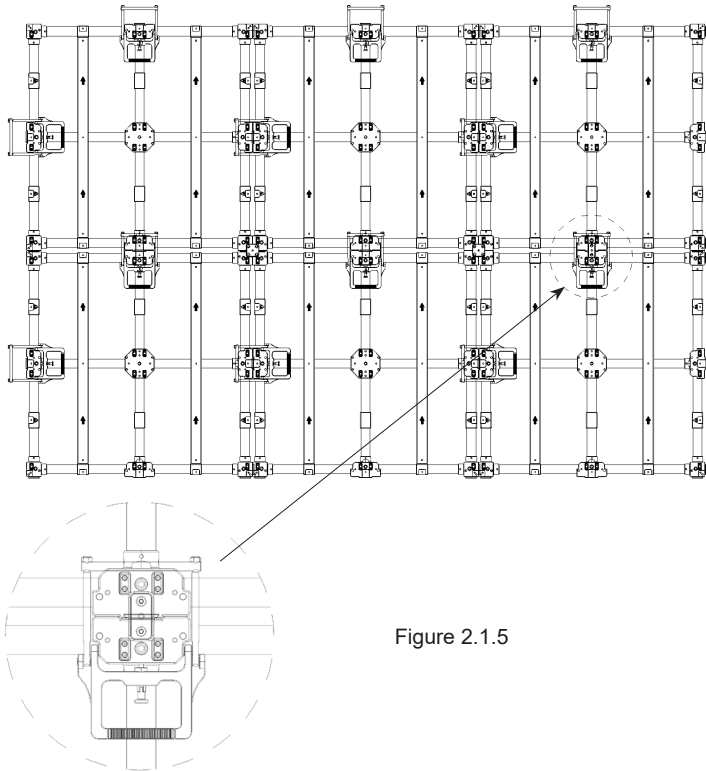
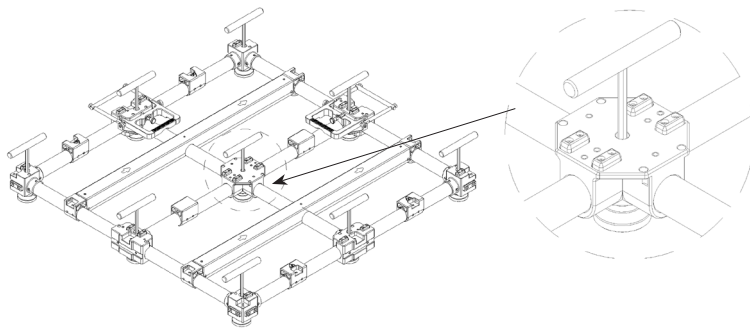


Figure 2.1.5



2.2 Install the display screen to the floor tile bracket

Step 1: Keep the arrow direction of the MG cabinet and the floor tile frame consistent (as shown in Figure 2.2.1), align the box block of the floor tile frame and place it on the floor tile support (as shown in Figure 2.2.2).

Step 2: Repeat step 1 to complete the installation of the entire floor tile screen (Figure 2.2.3).

Note: When installing the cabinet, connect the power and signal lines of all cabinets according to the wiring diagram.

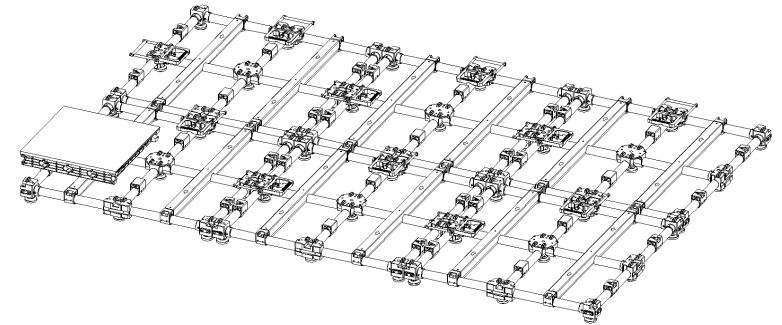


Figure 2.2.1

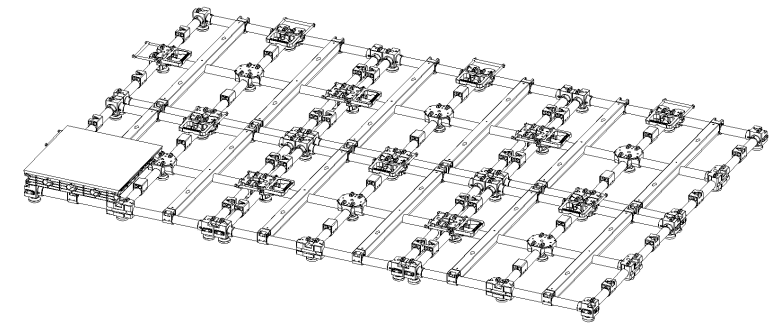


Figure 2.2.2

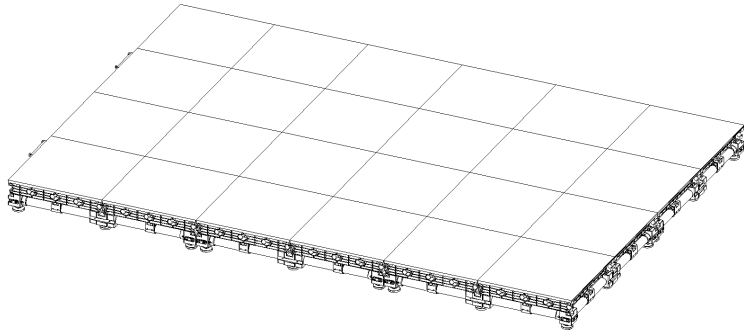


Figure 2.2.3

2.3 Maintenance of display screen

Use a special suction cup to suck the display box that needs maintenance. The suction cup should be centered on the box as much as possible, and the box should be extracted horizontally and upward (Figure 2.3.1). After the cabinet is maintained, follow the reverse process of taking out the cabinet and then install the cabinet.

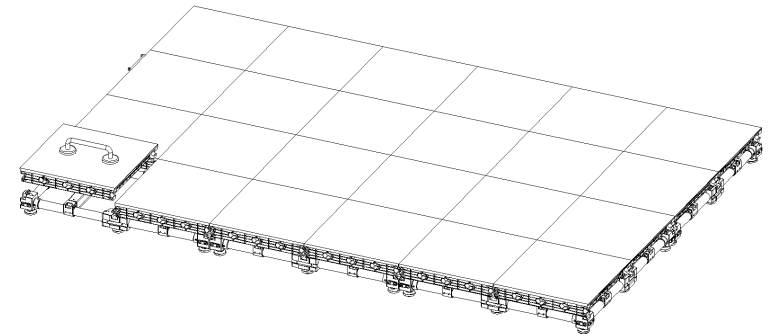
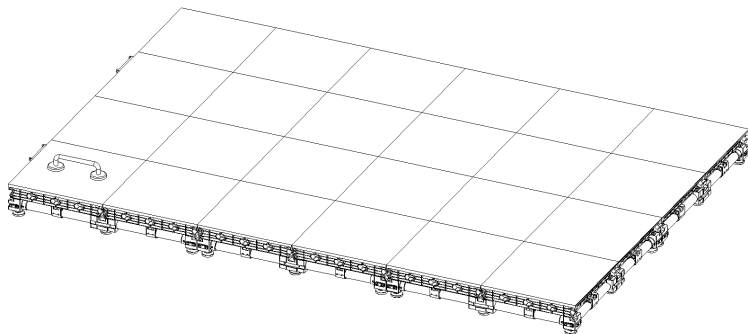


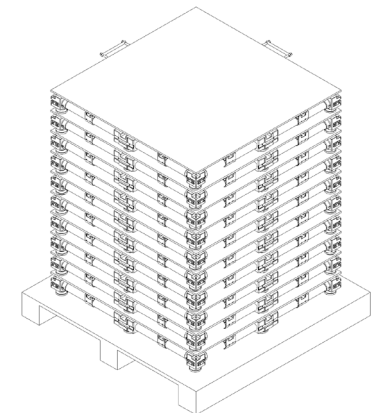
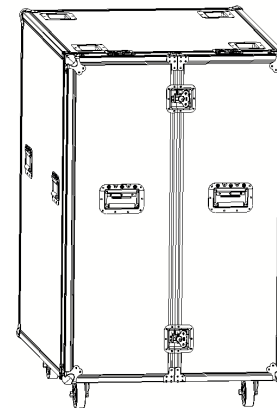
Figure 2.3.1

Chapter 3 Product packaging instructions

We offer 2 package options: 1. Flight case package; 2. Pallet + wooden driver + perimeter protection with cardboard + EPE foam + stretch film + steel band.

The technical parameters are as follows:

Parameters	Flight Case Package	Pallet Package
Size (L x W x H mm)	1060x800x1315	1200x1200x140mm
Quantity	5	10
Weight (kg/1m x 1m dance floor frame)	38/kg	38/kg



Chapter 4

Frequently Questions For LED Screen

4.1 Software Questions

1.Connection interruption or prompt unable to find the control card when starting the software, or the interface of the software is not adjustable, that is,gray status, and there is no main controlling icon of the software LED control equipment list.

Solution:

1. Change USB cable.
2. Check the equipment connection in the equipment manager.
3. Ensure that the computer is no virus.
4. If it is the internal sending card , it is probably due to the loose slot or damaged PCI, or the interference of foreign matter. Please insert sending card again or clean PCI interface by rubber.

2. Indicator light of the output port for sending card is extinguished.

Solution:

1. Relevant control software has not been installed, please ensure the software is successfully installed .
2. The FPD of the graphics card is closed. Please right click “my computer” on the desktop, and then click properties-> setting-> advanced> display-> FPD.

4.2 Hardware Questions

1. There is no content on the LED screen.

Solution:

- a. Check whether the screen is powered on.
 - b. Check whether the output signal is open.
 - c. Check whether display area is correct.
2. The cabinet of the LED screen is blurred or not bright enough in certain cabinets.

Solution:

- a. Check whether modules and HUB card is connected.
- b. Check whether the configuration file is uploaded correctly.
- c. Check whether the calibration is open or correct.
- d. Please change the broken masks if there is.

3. The picture of the cabinet is in a wrong order.

Solution: Please check the inner connection of each LED module to see if

cables are well connected.

4. Some individual LED lamps are extinguished.

Solution: Please repair these dead LEDs.

Chapter 5 LED Screen Maintenance

Proper use of the LED screen is very important for the long lifespan of the LED screen and the proper function. Daily maintenance of the LED screen must be finished carefully.

1. Please read the MG series LED Screen User Manual carefully. The manufacturer do not take any legal liability of the consequence due to the incorrect, incomplete, irresponsible, or unsafe use of the installation system.
2. Handle the LED screen cabinet with care, avoid collision and strike.
3. Check the cabinet carefully to make sure there is no loose screw before using.
4. Please confirm the steel frames are kept in place firmly before installation, for the screen already been installed for a long time, regular checking the situation of the connection part is required. If found any loose part, adjust it timely, reinforce or change new hanging parts in time.
5. Keep the whole cabinet frame structure away from oil, acid and other corrosive material.
6. Pay attention to the anti-static work of the screen body, do not touch the LED face directly by hand, wearing gloves when you install and debugging of the screen is recommended.
7. Null line and firing line of the power cable in a computer or the control system can't be connected reversely, It should be connected strictly according to the original position.
8. If the power switch trip happened frequently, please check the screen or replace the power supply switch.
9. Before lighting the screen, turn on the PC first, then turn on the LED screen. When stopping work of the screen, first turn off the LED screen, then turn off the PC (otherwise, it will cause the screen highlights, burn the lamp, the consequences are serious).

10. If there is short circuit, switch trip, wire burning, smoke and other abnormal phenomenon after removing, please don't repeat electricity test, and check the problem timely.
11. Master the installation method, the original data recovery, backup, and controlling parameter setting, basic data preset modification.
12. Inspect virus regularly, and remove irrelevant data.
13. Software operation is under professional engineers.
14. When installing and removing the LED screen, special attention must be paid to the protection of the LEDs on the four sides of the LED cabinet to prevent LEDs from damage.
15. Please keep the LED screen storage warehouse to be well ventilated, dry environment is a must. You can't let the wet weather inside the warehouse, please choose the high and dry location.



www.yes-led.com



Facebook

audio/effetti®



HQ address: YES TECH Optoelectric Industrial Park, No.108 Qingzuhu Road,
Kaifu District, Changsha City, Hunan Province, China

Tel: +86-(0)731-84539619

Web: www.yes-led.com

E-mail: yestech@yes-led.com

2024.10